

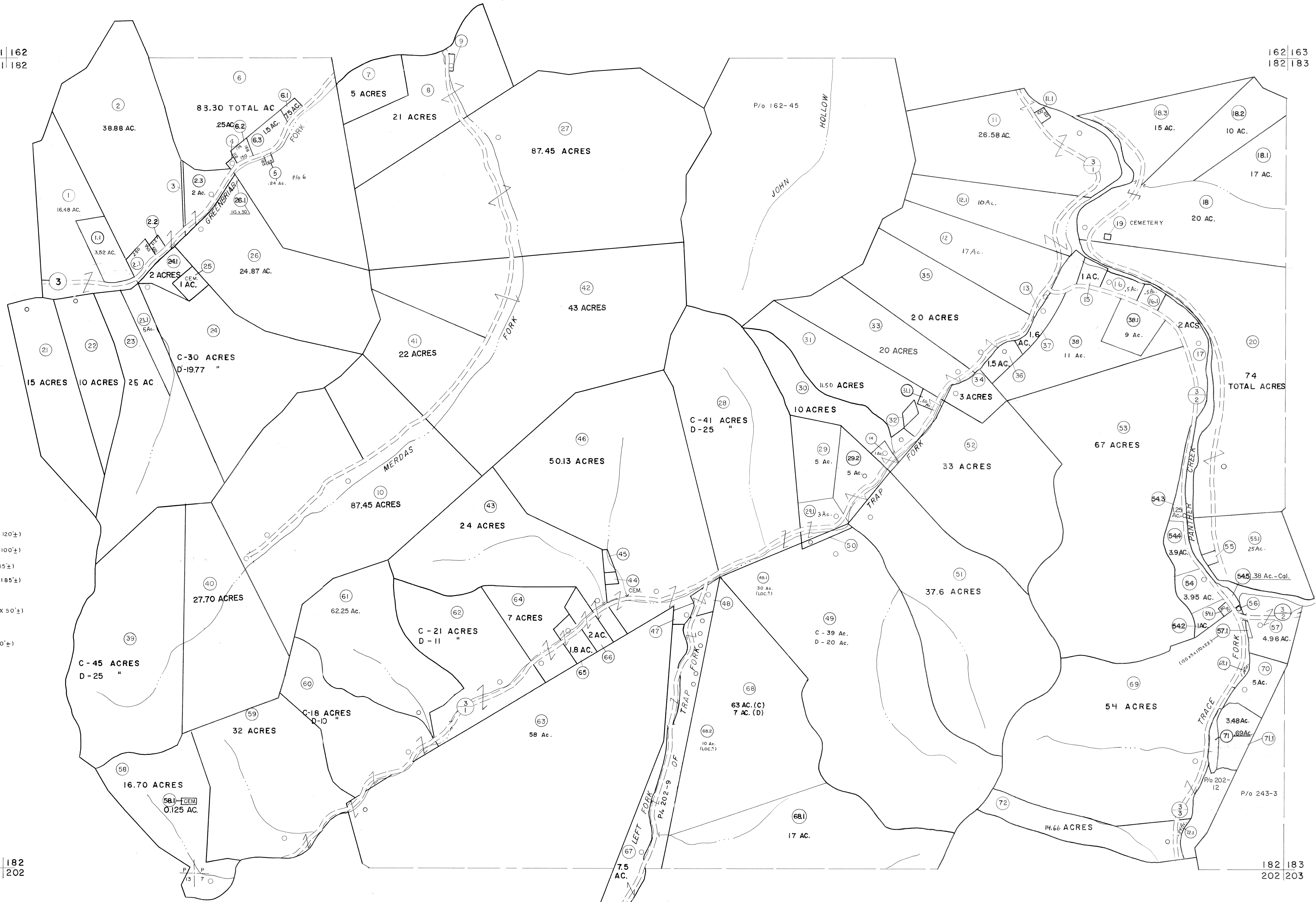
161 | 162
181 | 182

162 | 163
182 | 183

- 3 (10 1/2' X 620')
- 4 (70' X 90' X 100' X 90' ±)
- 5 (65' X 165')
- 9 (148' X 60' X 145' X 60')
- 13 (264' X 62' X 264' X 20' ±)
- 19 (50' X 50')
- 32 (170' ± X 130' ± X 150' ± X 120' ±)
- 44 (100' ± X 120' ± X 100' ± X 100' ±)
- 45 (200' X 100' ± X 200' X 45' ±)
- 47 (215' ± X 100' ± X 120' ± X 185' ±)
- 48 1 ACRE
- 50 (420' ± X 50' ± X 460' ± X 50' ±)
- 55 (100' ± X 80' ±)
- 56 (80' ± X 35' ± X 100' ± X 60' ±)

181 | 182
201 | 202

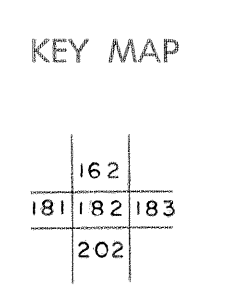
182 | 183
202 | 203



For Tax Purposes Only
 Prepared by
MICHAEL BAKER, JR., INC.
 Consulting Engineers
 Rochester, Pennsylvania

Legend	
Property line	Original lot line
Edge of pavement or roadway	Deed lot number
Corporation line	Parcel or index number
District line	Improvement
County line	Railroad

Revisions	
1 4-15-64	9 SLS INC. 12/29/98 DSW
2 12-5-74 T.G.	10 5/24/04 SBH
3 Revised 7-1-83	11 6-18-07 H.S.
4 July 1985	12
5 Revised 7-1-88	13
6 O.G.I.S 5-15-95 J.E.B.	14
7 SLS INC. 6/24/98 J.W.M.	15
8	16



McDOWELL COUNTY
 STATE OF WEST VIRGINIA
 Office of Assessor

DISTRICT	SANDY RIVER
SHEET NO:	182
Date, Aerial Photography:	April, 1961
Photo No:	121
Date, Map:	July, 1962
Scale:	1" = 400'