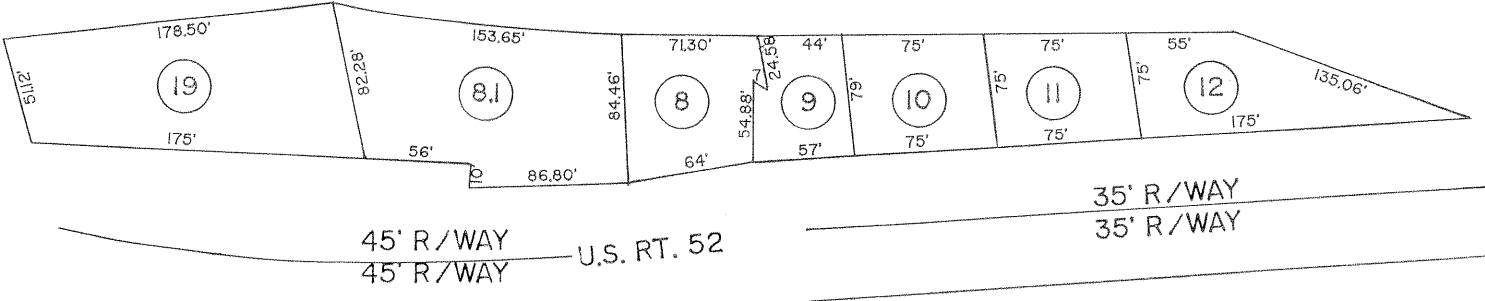
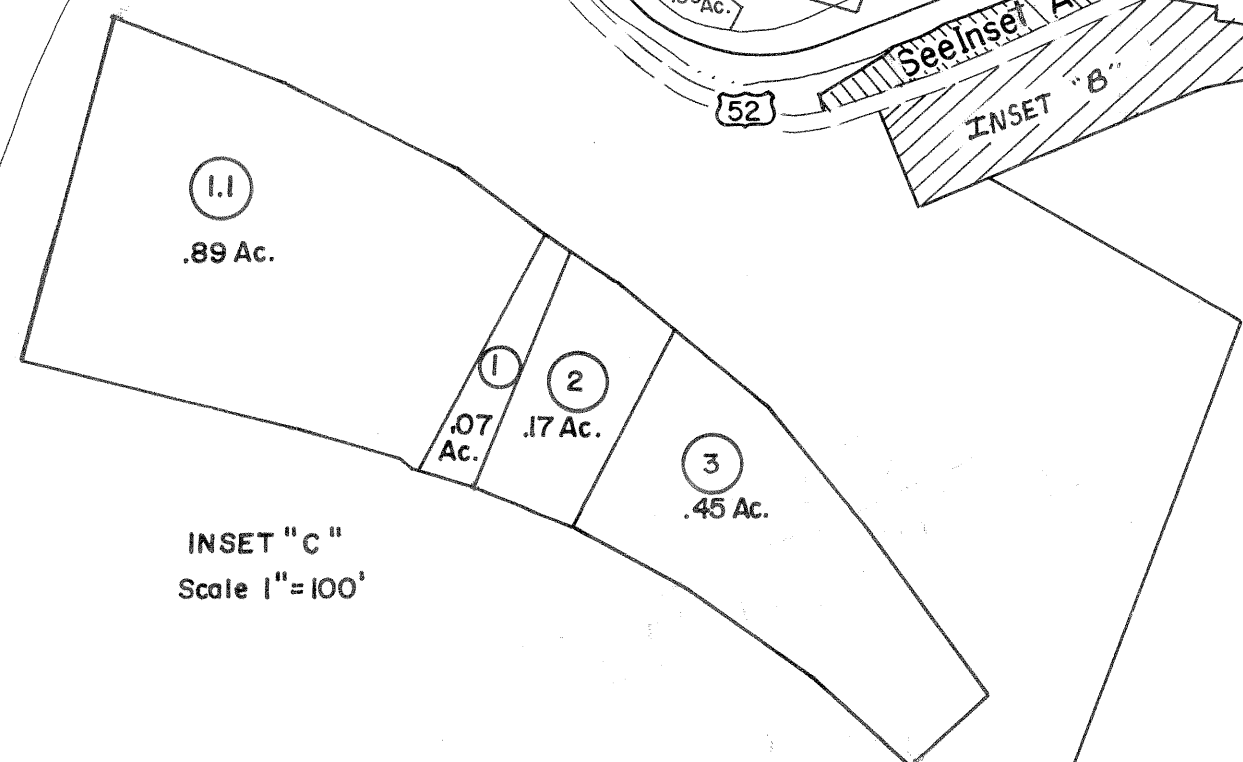
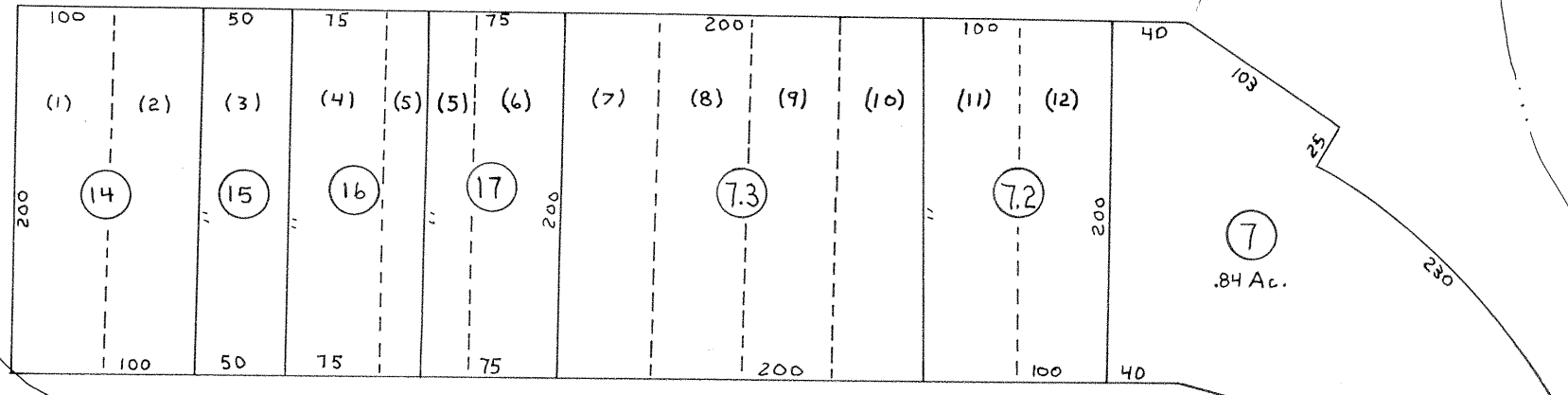
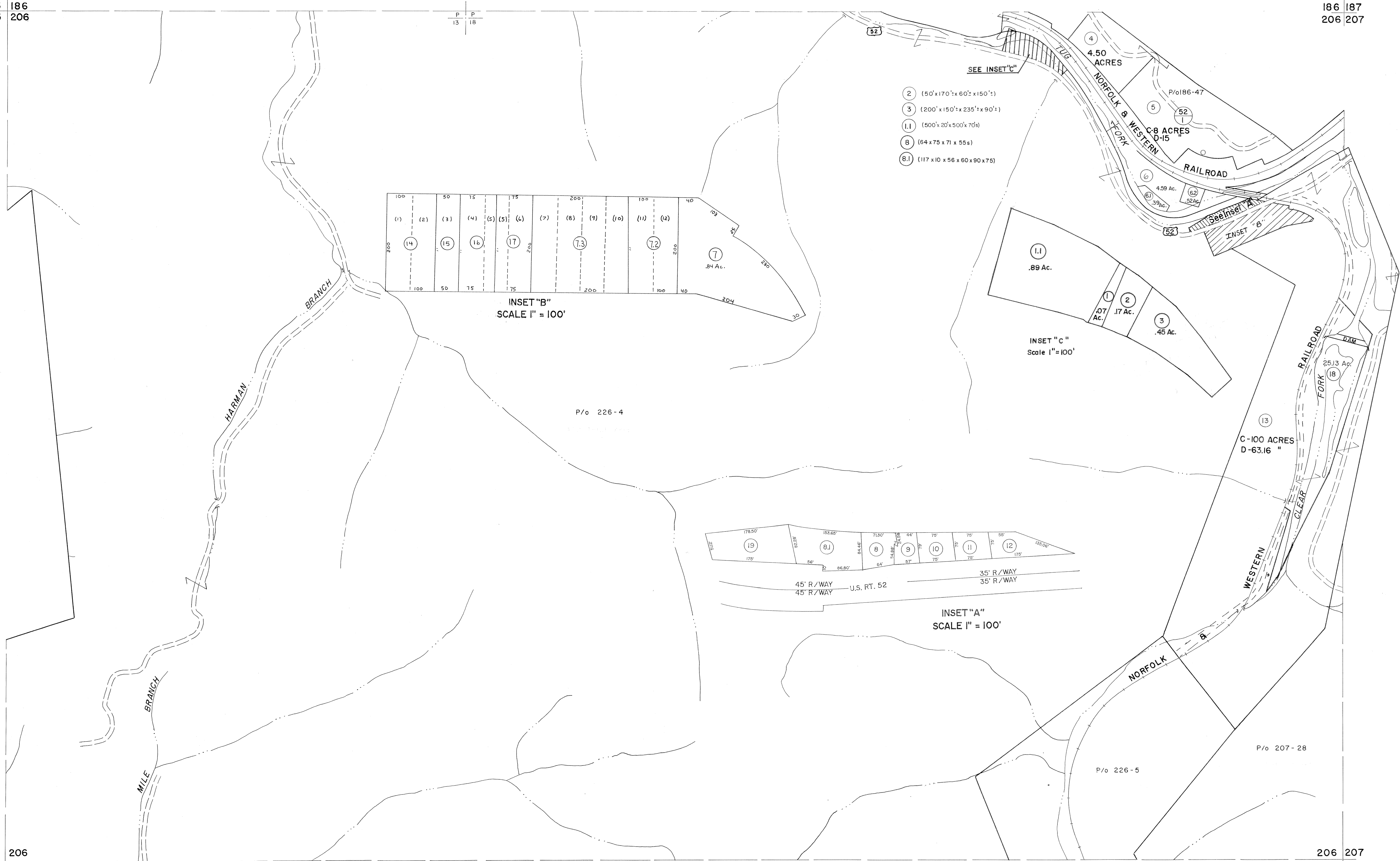


185 186  
205 206

186 187  
206 207

205 206  
225 226

206 207  
226 227



- 2 (50' x 170' x 60' x 150')
- 3 (200' x 150' x 235' x 90')
- 1.1 (500' x 20' x 500' x 70')
- 8 (64 x 75 x 71 x 55)
- 8.1 (117 x 10 x 56 x 60 x 90 x 75)

For Tax Purposes Only

Prepared by  
MICHAEL BAKER, JR., INC.  
Consulting Engineers  
Rochester, Pennsylvania

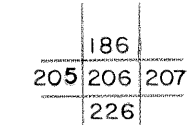
Legend

Property line	—	Original lot line	- - - - -
Edge of pavement or roadway	—	Deed lot number	(15)
Corporation line	—	Parcel or index number	(22)
District line	—	Improvement	o
County line	—	Railroad	—

Revisions

No.	Description	Date	By	Check
1	4-15-64	9	ESI	4/24/01 REK
2	12-6-74	10	ESI	12/4/02 REK
3	Revised to 7-1-83	11	C-18-07	11-4-5
4	7-1-84	12	L.E.S.	
5	July 1985	13	TRZ	
6	Revised to 7-1-88	14		
7	SLS INC. 6/25/98	15	DSW	
8	SLS INC. 12/29/98	16	DSW	

KEY MAP



McDOWELL COUNTY  
STATE OF WEST VIRGINIA  
Office of Assessor

DISTRICT

SANDY RIVER

SHEET NO: 206

Date, Aerial Photography: April, 1961 Date, Map: July, 1962  
Photo No: Scale: 1" = 400'