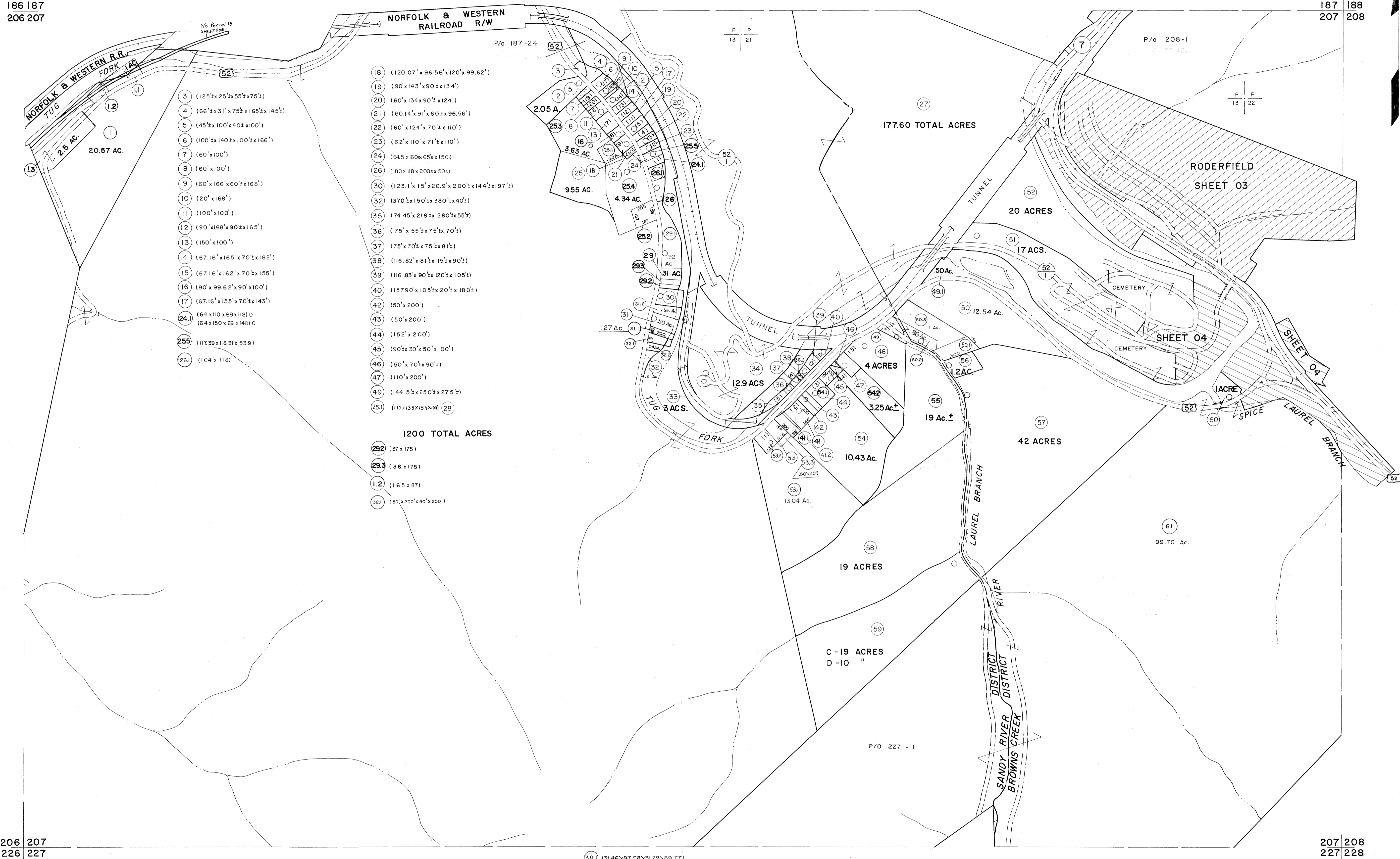


186 187
206 207

187 188
207 208



206 207
226 227

207 208
227 228

For Tax Purposes Only

Prepared by
MICHAEL BAKER, JR., INC.
Consulting Engineers
Rochester, Pennsylvania

Legend

| | | | |
|-----------------------------|-----|------------------------|------|
| Property line | --- | Original lot line | --- |
| Edge of pavement or roadway | --- | Deed lot number | (15) |
| Corporation line | --- | Parcel or index number | (29) |
| District line | --- | Improvement | o |
| County line | --- | Railroad | + |

Revisions

| | | | | | |
|---|-------------------|----|-------------------|--------|----|
| 1 | 4-15-64 | 9 | O.G.I.S. 12-1-96 | J.E.B. | 17 |
| 2 | 12-5-74 | 10 | SLS INC. 6/26/98 | DSW | 18 |
| 3 | Revised to 7-1-83 | 11 | SLS INC. 12/30/98 | DSW | 19 |
| 4 | 7-1-84 | 12 | | | 20 |
| 5 | Revised to 7-1-88 | 13 | | | 21 |
| 6 | Revised to 7-1-88 | 14 | | | 22 |
| 7 | Revised to 7-1-89 | 15 | | | 23 |
| 8 | O.G.I.S. 5-15-95 | 16 | | | 24 |

KEY MAP



McDOWELL COUNTY
STATE OF WEST VIRGINIA
Office of Assessor

DISTRICT **SANDY RIVER
BROWNS CREEK**

SHEET NO: 207

Date, Aerial Photography: April, 1961 Date, Map: July, 1962
Photo No: Scale: 1" = 400'