

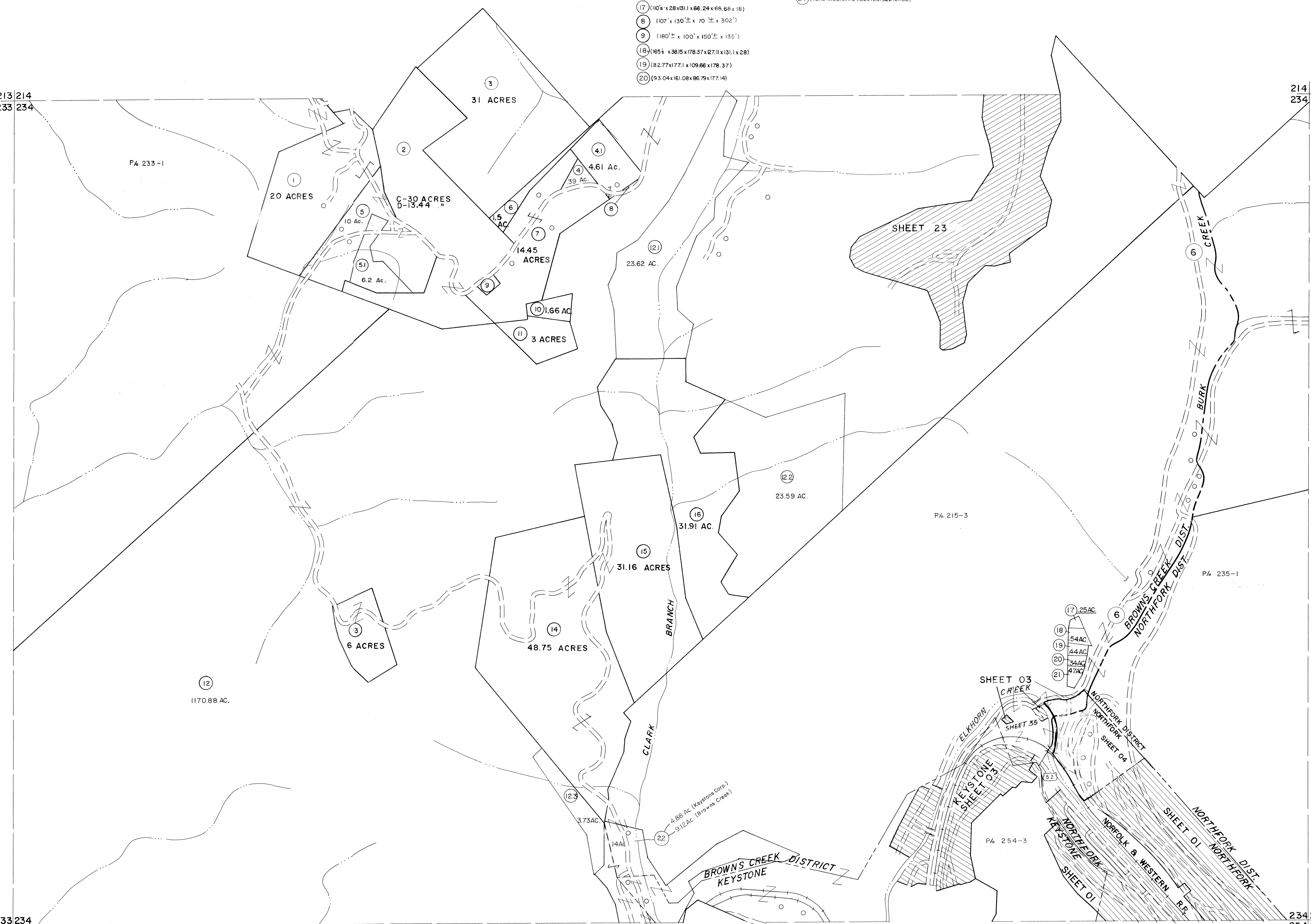
213|214  
233|234

214|215  
234|235

233|234  
253|254

234|235  
254|255

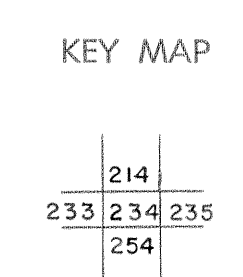
- 17 (110' x 28' x 131' x 66.24' x 66.68' x 16)
- 18 (107' x 130' x 70' x 302')
- 19 (180' x 100' x 150' x 135')
- 20 (165' x 38.15' x 178.37' x 27.11' x 131.1' x 28)
- 21 (82.77' x 177.1' x 109.66' x 178.37')
- 22 (93.04' x 161.08' x 86.79' x 177.14')



For Tax Purposes Only  
 Prepared by  
**MICHAEL BAKER, JR., INC.**  
 Consulting Engineers  
 Rochester, Pennsylvania

Legend	
Property line	Original lot line
Edge of pavement or roadway	Deed lot number
Corporation line	Parcel or index number
District line	Improvement
County line	Railroad

Revisions			
1	4-15-64	9	O.G.I.S 12-1-96 J.E.B
2	REVISED JULY 1965 jag	10	ESI 12/4/02 REK
3	12-9-74 T.C.	11	5-15-05 KLS
4	Revised to 7-1-83	12	
5	July 1988	13	
6	Revised to 7-1-88	14	
7	Revised to 7-1-89	15	
8	O.G.I.S 5-15-95 J.E.B	16	



**McDOWELL COUNTY**  
 STATE OF WEST VIRGINIA  
 Office of Assessor

DISTRICT	
<b>BROWNS CREEK</b>	
<b>SHEET NO: 234</b>	
Date, Aerial Photography: April, 1961	Date, Map: July, 1962
Photo No:	Scale: 1" = 400