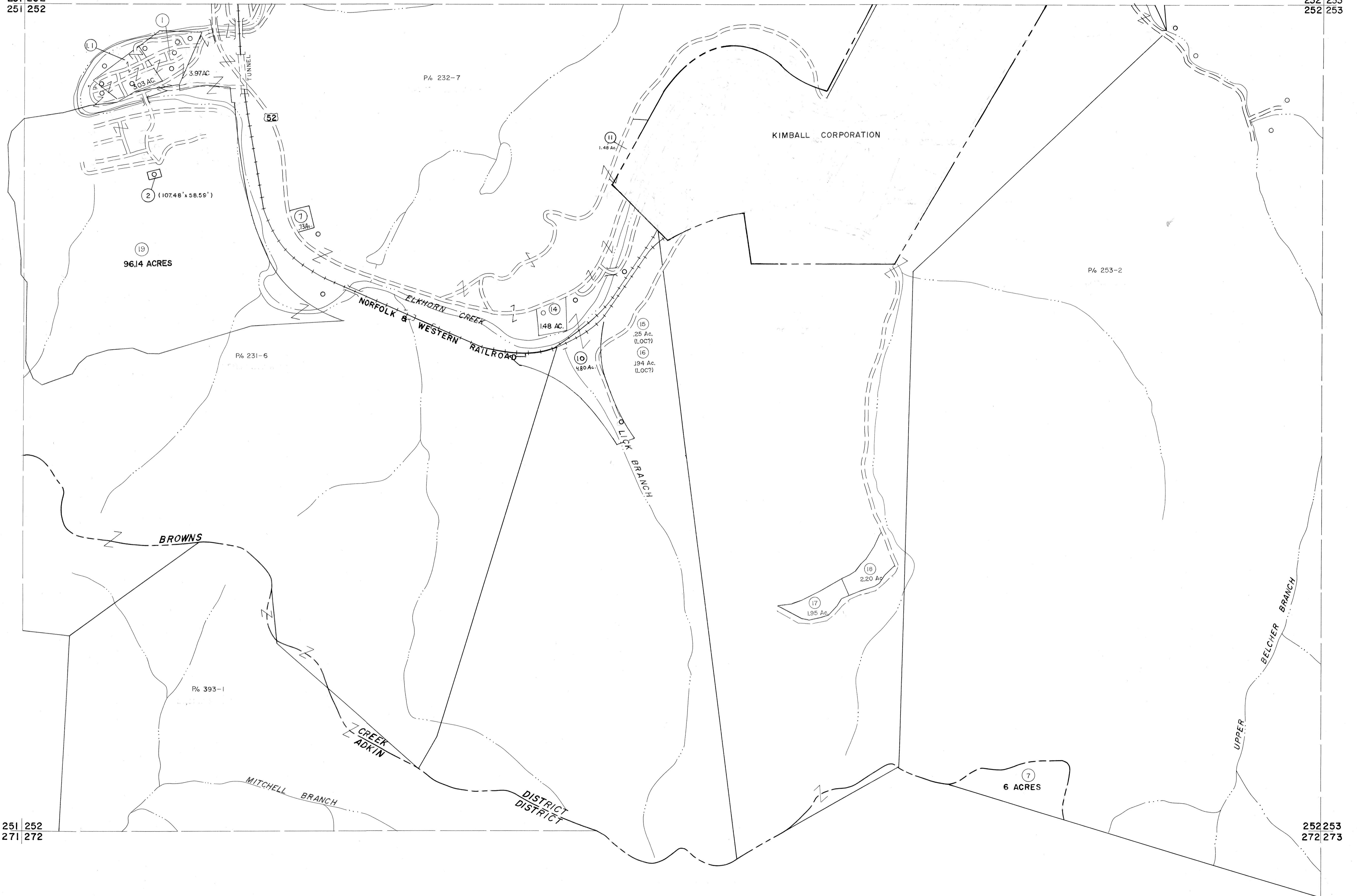


231 232  
251 252

232 233  
252 253



251 252  
271 272

252 253  
272 273

For Tax Purposes Only

Prepared by  
MICHAEL BAKER, JR., INC.  
Consulting Engineers  
Rochester, Pennsylvania

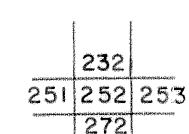
Legend

Property line	—	Original lot line	---
Edge of pavement or roadway	—	Deed lot number	(15)
Corporation line	---	Parcel or index number	(22)
District line	---	Improvement	o
County line	---	Railroad	—

Revisions

1	4-15-64	9		17	
2	Revised 12-10-74 T.G.	10		18	
3	Revised to 7-1-83 J.E.B.	11		19	
4	July 1982 J.E.B.	12		20	
5	Revised to 7-1-85 J.E.B.	13		21	
6	O.G.I.S 5-15-95 J.E.B.	14		22	
7	O.G.I.S 12-1-96 J.E.B.	15		23	
8	SLS INC. 12/30/98 DSW	16		24	

KEY MAP



McDOWELL COUNTY  
STATE OF WEST VIRGINIA  
Office of Assessor

DISTRICT

BROWNS CREEK

SHEET NO: 252

Date, Aerial Photography: April, 1961 Date, Map: July, 1962  
Photo No: Scale: 1" = 400'