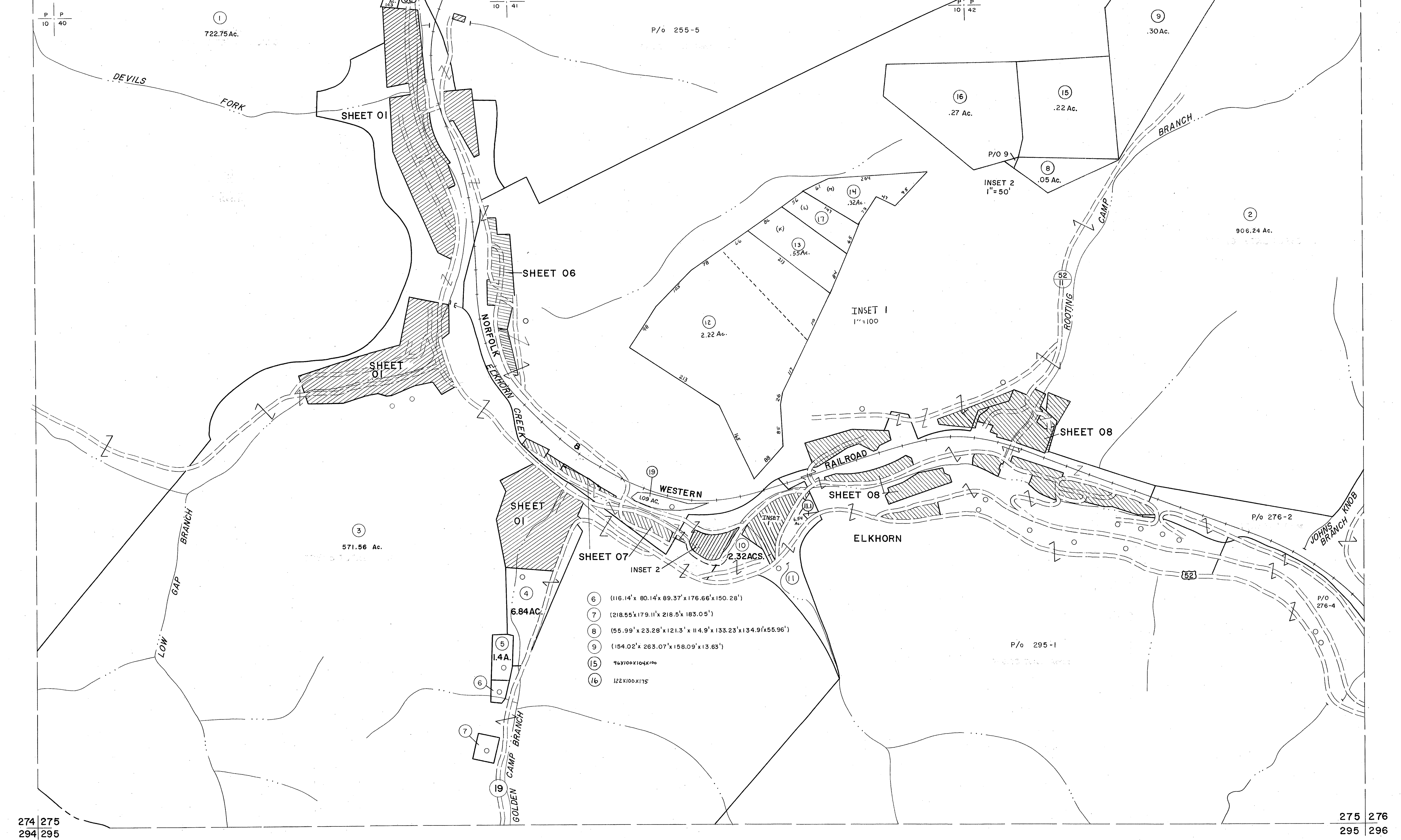


254 255
274 275

255 256
275 276



6	(116.14' x 80.14' x 89.37' x 176.66' x 150.28')
7	(218.55' x 179.11' x 218.5' x 183.05')
8	(55.99' x 23.28' x 121.3' x 114.9' x 133.23' x 134.9' x 55.96')
9	(154.02' x 263.07' x 158.09' x 13.63')
15	96' x 100' x 104' x 100'
16	122' x 100' x 175'

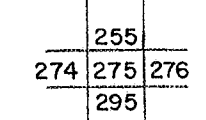
Legend

Property line	---	Original lot line	---
Edge of pavement or roadway	---	Dead lot number	(15)
Corporation line	---	Parcel or index number	(99)
District line	---	Improvement	o
County line	---	Railroad	---

Revisions

1	4-15-64	9	ESI	12/4/02	REK	17
2	12-10-74	10	T.G.	5/23/04	S&H	18
3	REV. TO 7-1-83	11	NCS	8/27/06	S&H	19
4	July 1985	12	T&B	3/2/14	S&H	20
5	O.G.I.S 5-15-95	13	J.E.B			21
6	O.G.I.S 12-1-96	14	J.E.B			22
7	ELS INC. 6/26/98	15	J.W.M			23
8		16				24

KEY MAP



For Tax Purposes Only

Prepared by
MICHAEL BAKER, JR., INC.
Consulting Engineers
Rochester, Pennsylvania

McDOWELL COUNTY
STATE OF WEST VIRGINIA
Office of Assessor

DISTRICT

ELKHORN

SHEET NO: 275

Date, Aerial Photography: April, 1961
Photo No:

Date, Map: July, 1962
Scale: 1" = 400'