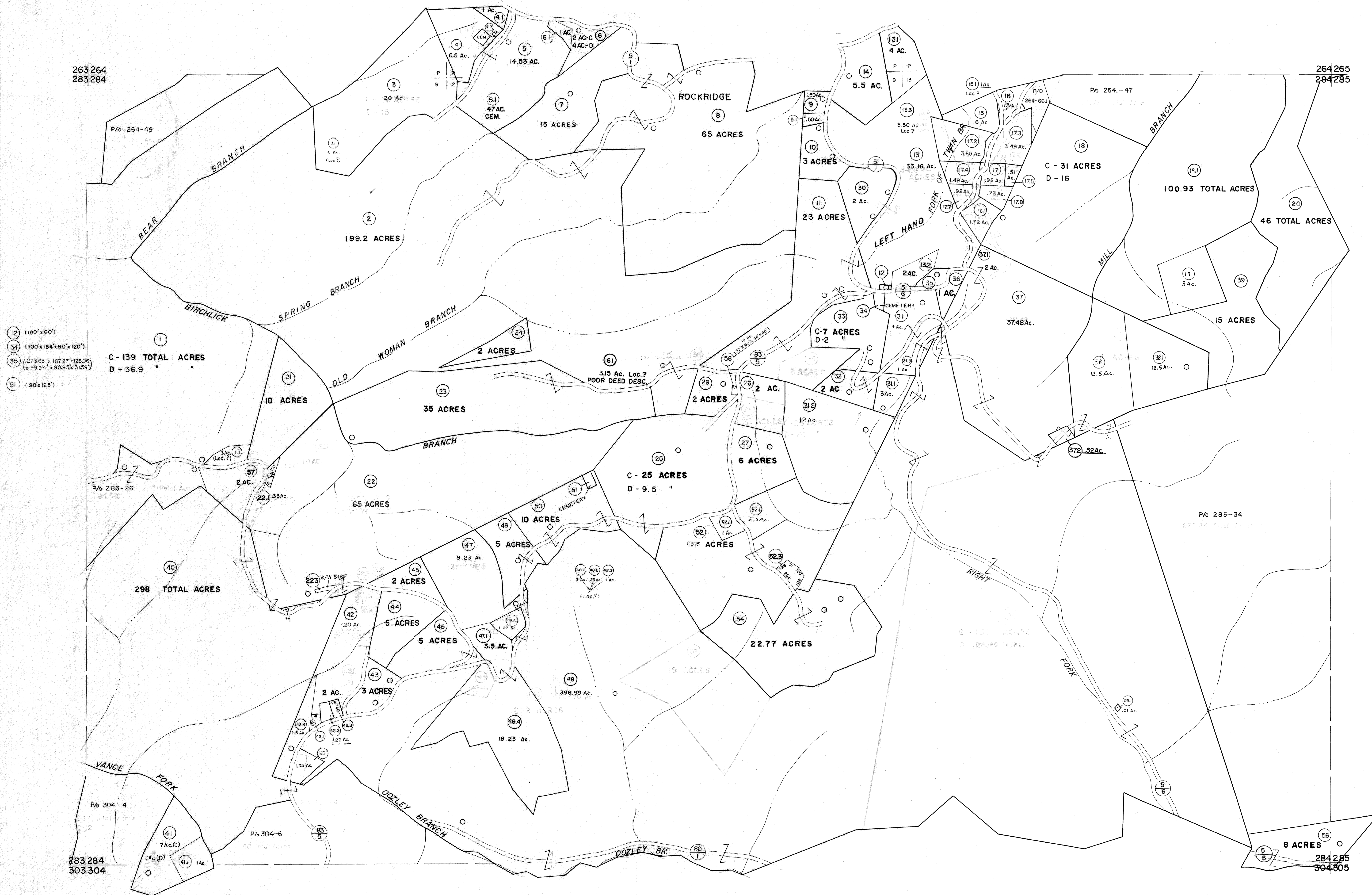


263 264
283 284

264 265
284 285



- (12) (100' x 60')
- (34) (100' x 184' x 80' x 120')
- (35) (273.63' x 167.27' x 128.06' x 99.94' x 90.85' x 31.59')
- (51) (90' x 125')

C - 139 TOTAL ACRES
D - 36.9 "

C - 25 ACRES
D - 9.5 "

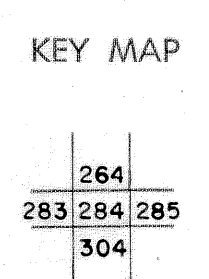
C - 7 ACRES
D - 2 "

C - 31 ACRES
D - 16 "

For Tax Purposes Only
Prepared by
MICHAEL BAKER, JR., INC.
Consulting Engineers
Rochester, Pennsylvania

Legend	
Property line	—
Edge of pavement or roadway	—
Corporation line	—
District line	—
County line	—
Original lot line	—
Deed lot number	(15)
Parcel or index number	(29)
Improvement	○
Railroad	—

Revisions	
1	4-15-64
2	12-11-74 T.G.
3	Revised to 7-1-83
4	7-1-84 L.E.S.
5	Revised to 7-1-85
6	Revised to 7-1-85
7	Revised to 7-1-87
8	O.G.I.S. 5-15-95 J.E.B.
9	O.G.I.S. 12-1-96 J.E.B.
10	SLS INC. 6/26/98 JWM
11	SLS INC. 12/31/98 DSW
12	ES1 4/26/01 REK
13	S&H 12/31/05
14	H&S 6-18-07
15	
16	



McDOWELL COUNTY
STATE OF WEST VIRGINIA
Office of Assessor

DISTRICT
SANDY RIVER
SHEET NO: 284
Date, Aerial Photography: April, 1961 Date, Map: July, 1962
Photo No: Scale: 1" = 400'