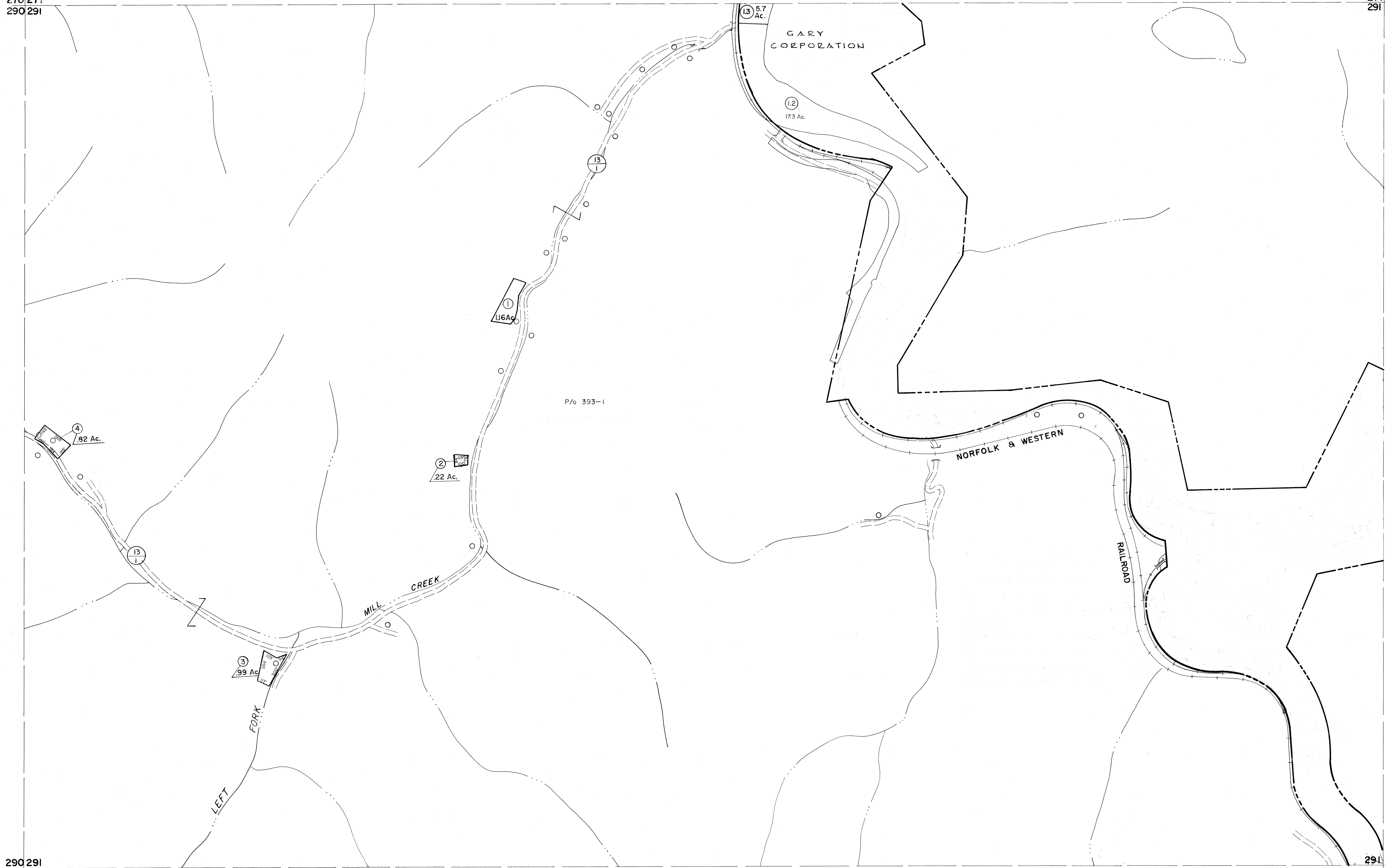


270|271  
290|291

271|272  
291|292



For Tax Purposes Only

Prepared by  
MICHAEL BAKER, JR., INC.  
Consulting Engineers  
Rochester, Pennsylvania

Legend

Property line	—————	Original lot line	-----
Edge of pavement or roadway	- - - - -	Deed lot number	(15)
Corporation line	-----	Parcel or index number	(99)
District line	-----	Improvement	o
County line	-----	Railroad	+

Revisions

1	4-15-64	9	17
2	4-18-72 T.D.M.	10	18
3	7-1-83 L.E.S.	11	19
4	11-19-83 J.W.M.	12	20
5	SLS INC. 6/26/98 J.W.M.	13	21
6	SLS INC. 1/4/99 D.S.W.	14	22
7	5/23/04 S & H	15	23
8	5-15-05 H & S	16	24

KEY MAP



McDOWELL COUNTY  
STATE OF WEST VIRGINIA  
Office of Assessor

DISTRICT

ADKIN

SHEET NO: 291

Date, Aerial Photography: April, 1961 Date, Map: July, 1962  
Photo No: Scale: 1" = 400'