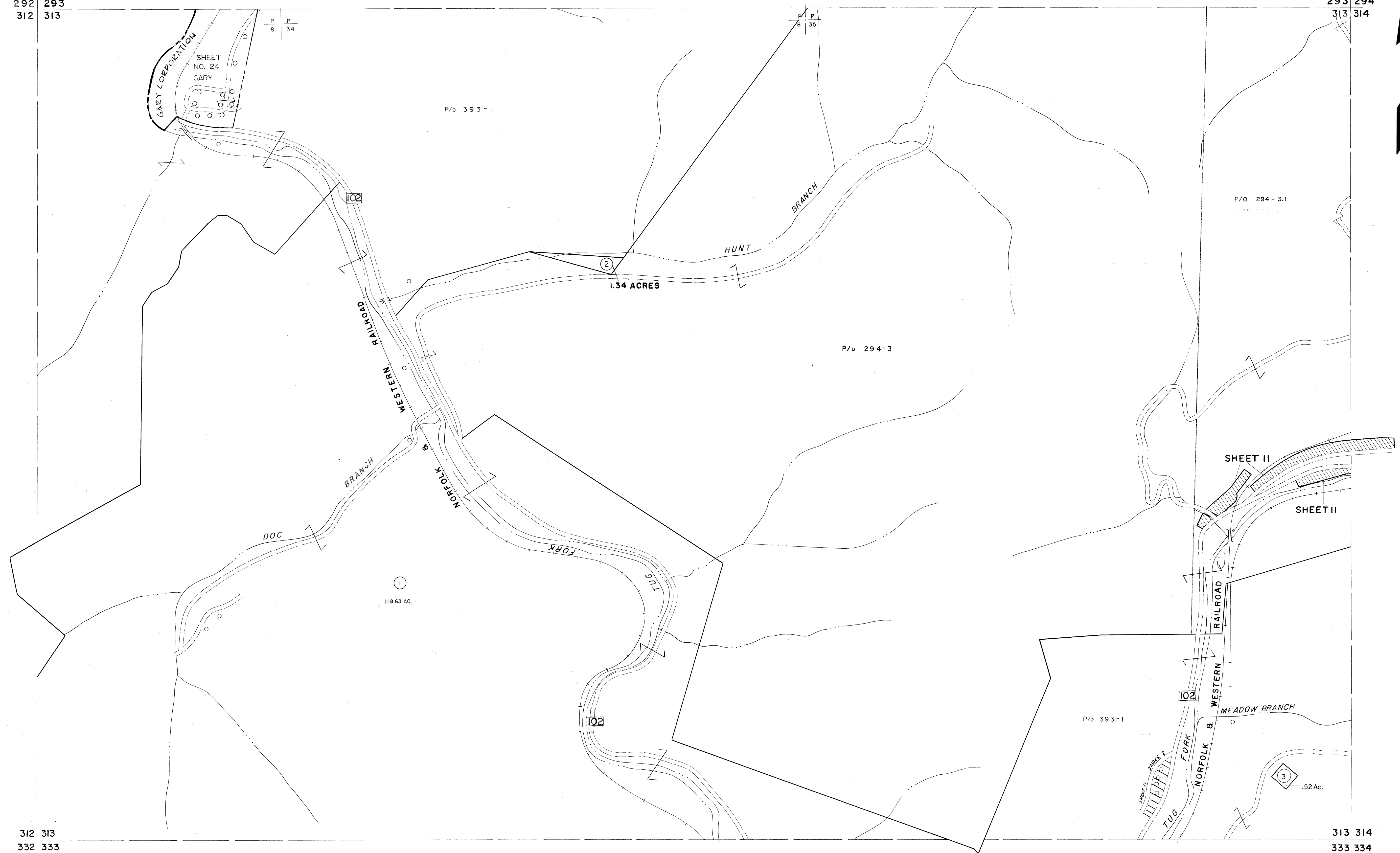


292 293
312 313

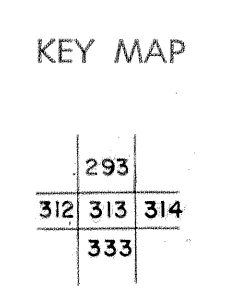
293 294
313 314



For Tax Purposes Only
 Prepared by
MICHAEL BAKER, JR., INC.
 Consulting Engineers
 Rochester, Pennsylvania

| Legend | |
|-----------------------------|-----------|
| Property line | — |
| Edge of pavement or roadway | - - - - |
| Corporation line | - · - · - |
| District line | - - - - |
| County line | - - - - |
| Original lot line | - · - · - |
| Deed lot number | (15) |
| Parcel or index number | (29) |
| Improvement | ○ |
| Railroad | —+—+—+— |

| Revisions | |
|-----------|-------------------------|
| 1 | 4-15-64 |
| 2 | 4-19-72 J.M. |
| 3 | 12-5-74 DAE |
| 4 | 7-1-83 L.E.S. |
| 5 | 12-1-85 J.E.B. |
| 6 | Q.G.I.S. 5-15-95 J.E.B. |
| 7 | Q.G.I.S. 12-1-96 J.E.B. |
| 8 | SLS INC. 6/26/98 J.W.M. |
| 9 | ESI 12/5/02 REK |
| 10 | |
| 11 | |
| 12 | |
| 13 | |
| 14 | |
| 15 | |
| 16 | |



McDOWELL COUNTY
 STATE OF WEST VIRGINIA
 Office of Assessor

DISTRICT **ADKIN**
 SHEET NO: **313**
 Date, Aerial Photography: April, 1961
 Photo No: _____
 Date, Map: July, 1962
 Scale: 1" = 400'