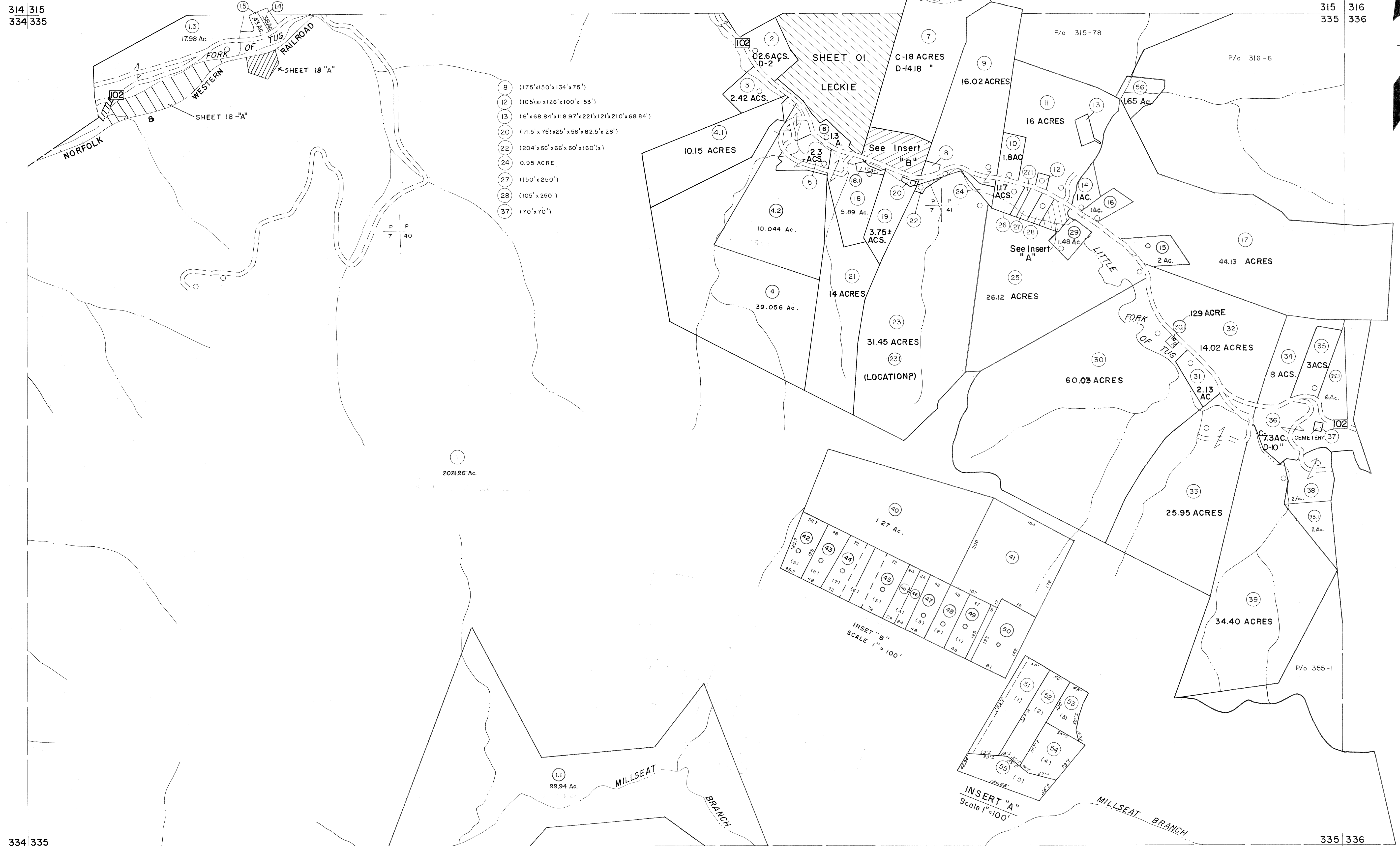


314 315  
334 335

315 316  
335 336

334 335  
354 355

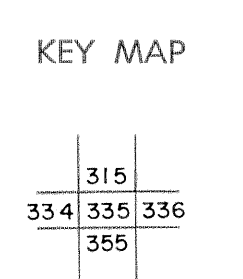
335 336  
355 356



For Tax Purposes Only  
 Prepared by  
**MICHAEL BAKER, JR., INC.**  
 Consulting Engineers  
 Rochester, Pennsylvania

Legend	
Property line	Original lot line
Edge of pavement or roadway	Deed lot number
Corporation line	Parcel or index number
District line	Improvement
County line	Railroad

Revisions			
1	4-15-64	9	S&H 12/31/05
2	12-9-74	10	S&H 8/25/06
3	REV. TO 7-1-83	11	H&S 6-18-07
4	July 1985	12	
5	O.G.I.S 5-15-95	13	J.E.B.
6	SLS INC. 1/4/99	14	DSW
7	ESI 12/5/02	15	REK
8	5/23/04	16	S&H



**McDOWELL COUNTY**  
 STATE OF WEST VIRGINIA  
 Office of Assessor

DISTRICT	<b>ADKIN</b>
SHEET NO:	<b>335</b>
Date, Aerial Photography:	April, 1961
Photo No:	
Date, Map:	July, 1962
Scale:	1" = 400'