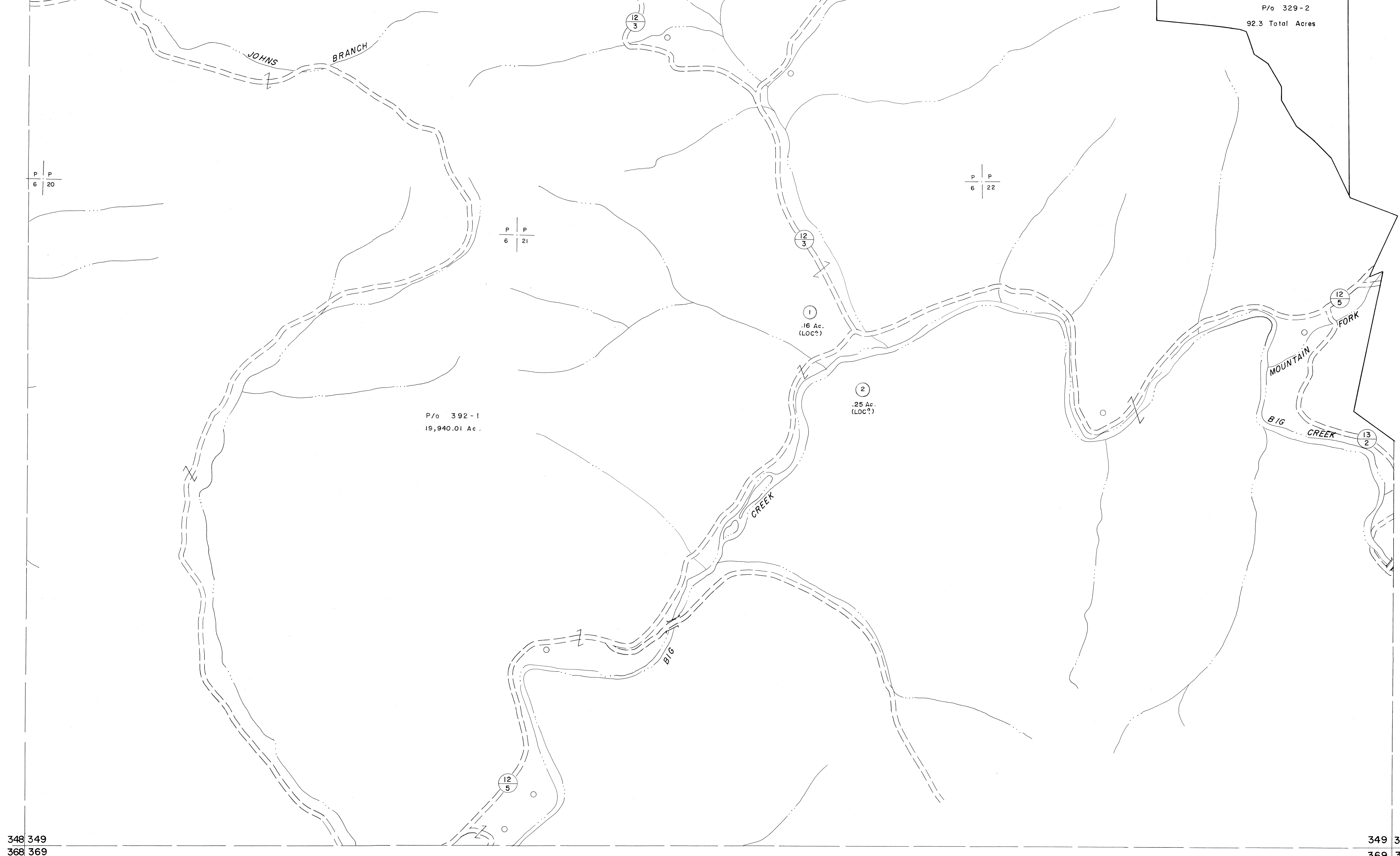


328 329
348 349

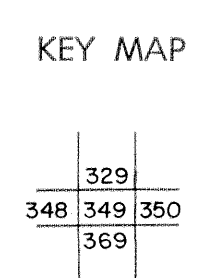
329 330
349 350



For Tax Purposes Only
 Prepared by
MICHAEL BAKER, JR., INC.
 Consulting Engineers
 Rochester, Pennsylvania

| Legend | |
|-----------------------------|----------------------------|
| Property line | Original lot line |
| Edge of pavement or roadway | Deed lot number (15) |
| Corporation line | Parcel or index number (2) |
| District line | Improvement |
| County line | Railroad |

| Revisions | | | |
|-----------|-----------------------|----|----|
| 1 | 4-15-64 | 9 | 17 |
| 2 | July, 1963 | 10 | 18 |
| 3 | 1/22 | 11 | 19 |
| 4 | 1/22 | 12 | 20 |
| 5 | O.G.S. 5-15-95 J.E.B. | 13 | 21 |
| 6 | | 14 | 22 |
| 7 | | 15 | 23 |
| 8 | | 16 | 24 |



McDOWELL COUNTY
 STATE OF WEST VIRGINIA
 Office of Assessor

DISTRICT **BIG CREEK**
SHEET NO: 349
 Date, Aerial Photography: April, 1961 Date, Map: July, 1962
 Photo No: Scale: 1" = 400'