

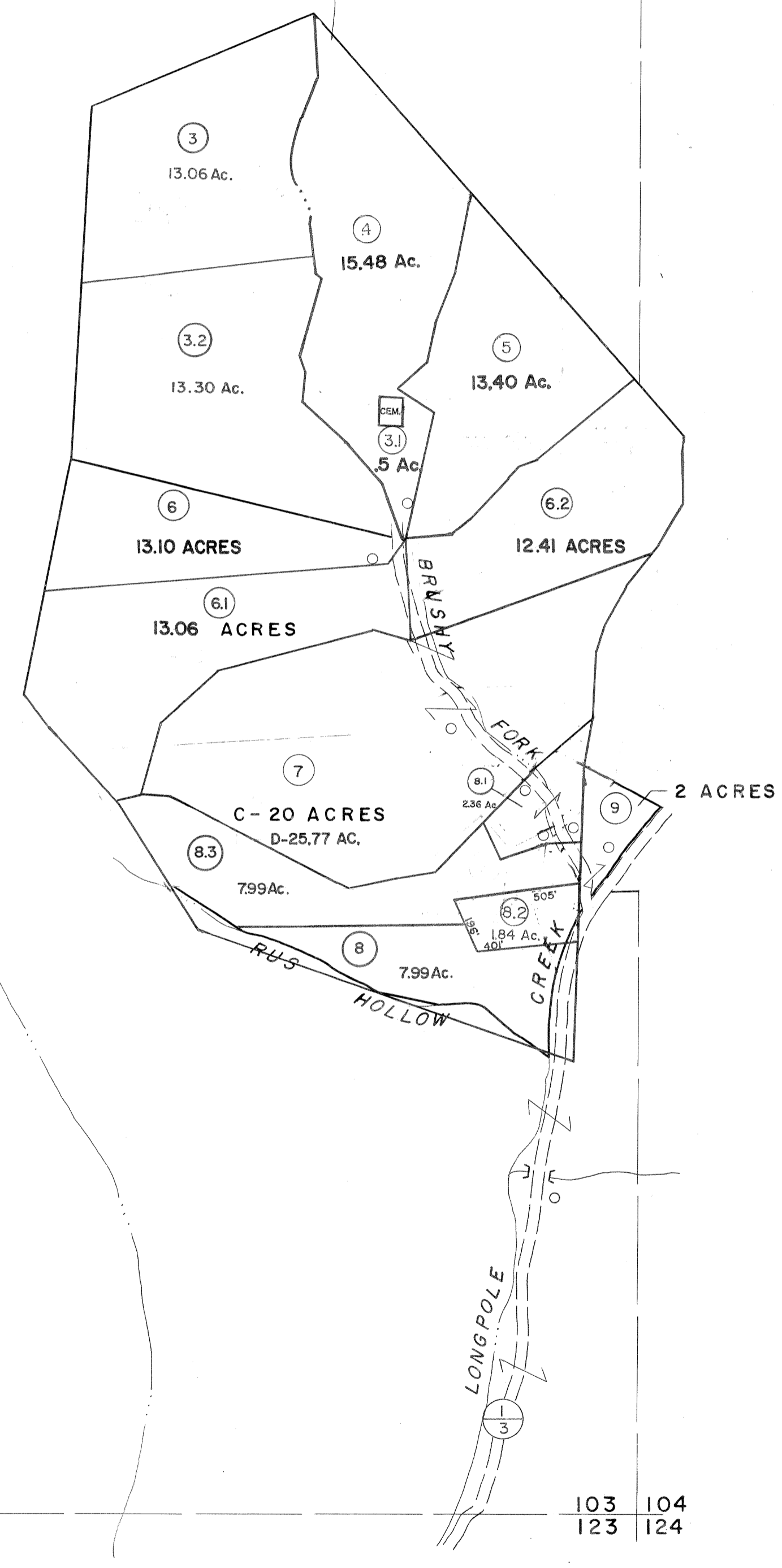
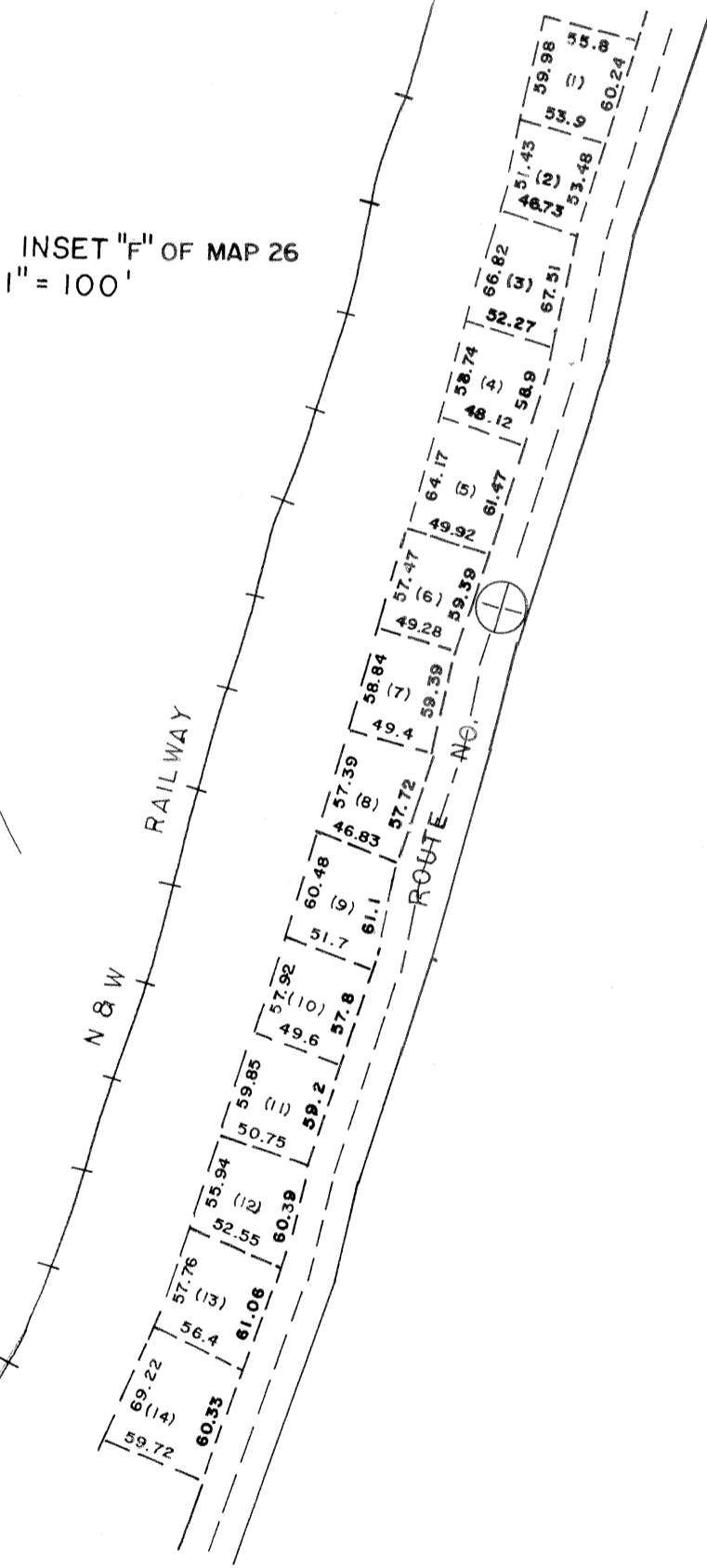
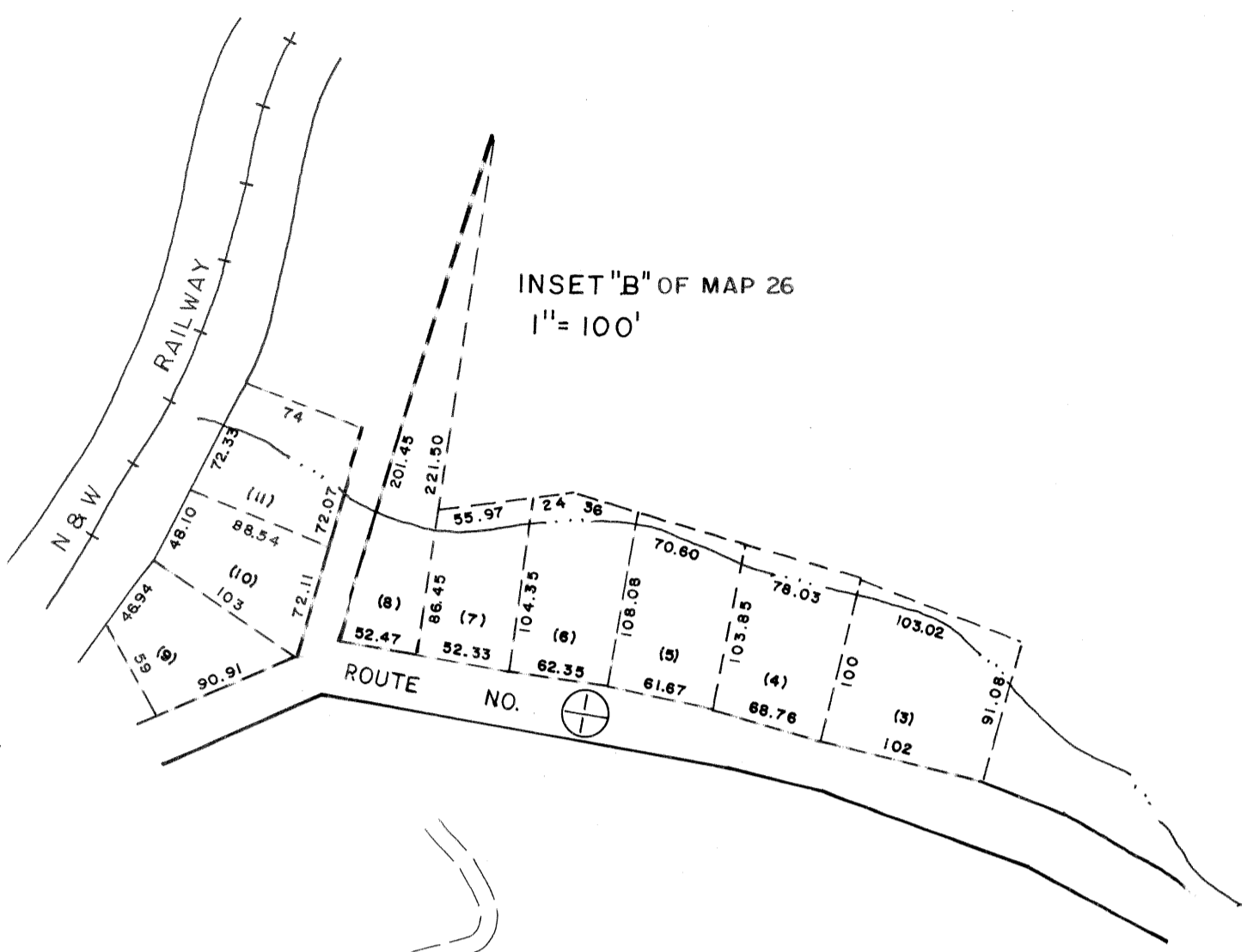
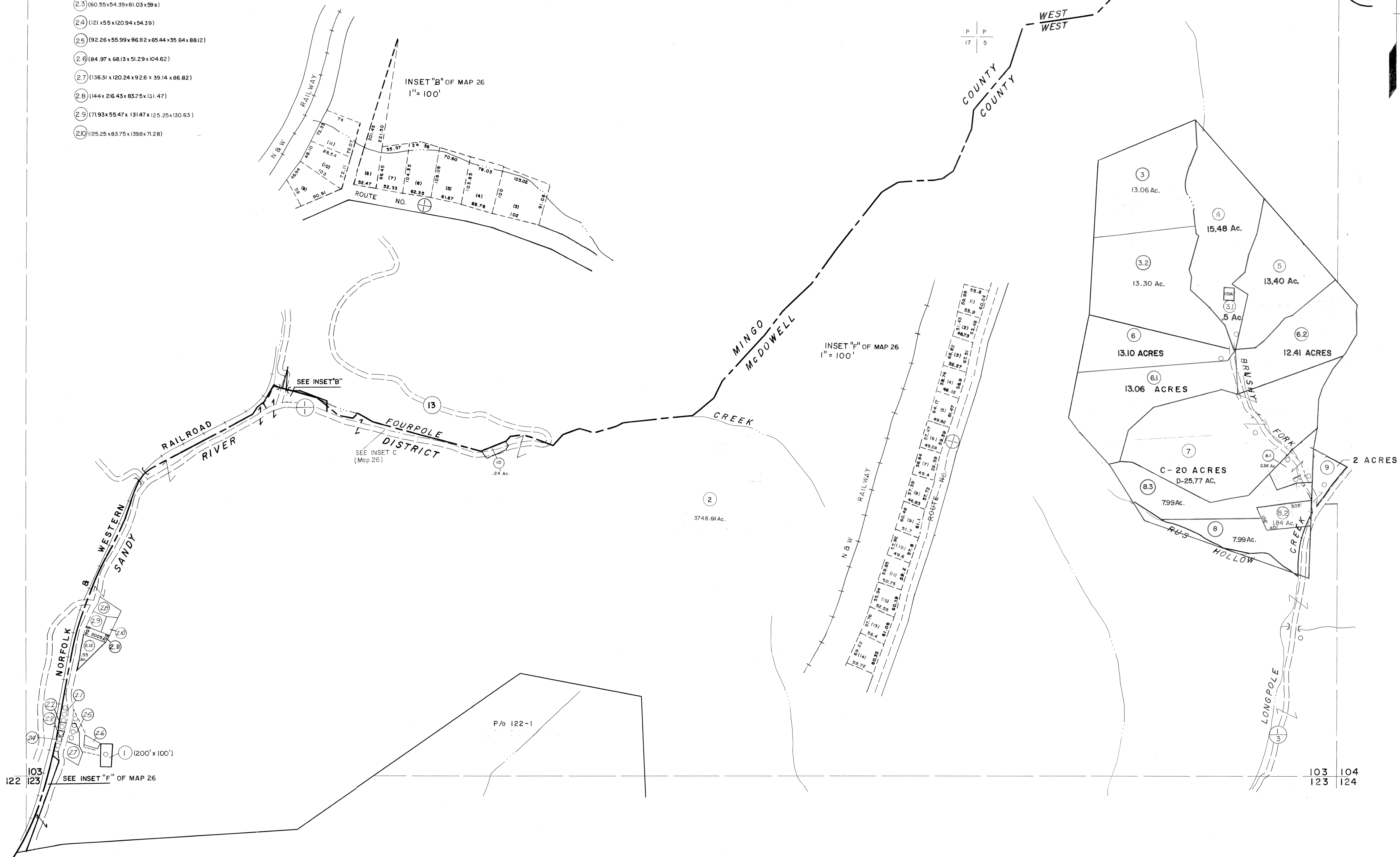
103

- (2.1) 235.99 x 60.78 x 245.99 x 10.85
- (2.2) 62.27 x 59.5 x 62.39 x 60.78
- (2.3) 60.55 x 54.39 x 61.03 x 59.5
- (2.4) 121 x 55 x 120.94 x 54.39
- (2.5) 92.26 x 55.99 x 86.82 x 65.44 x 35.64 x 88.12
- (2.6) 84.97 x 68.13 x 51.29 x 104.62
- (2.7) 136.31 x 120.24 x 92.6 x 39.14 x 86.82
- (2.8) 144 x 216.43 x 83.75 x 131.47
- (2.9) 171.93 x 55.47 x 131.47 x 125.25 x 130.63
- (2.10) 125.25 x 83.75 x 139.8 x 71.28

P P
17 4

P P
17 5

103 104



122 103 123 SEE INSET "F" OF MAP 26

103 104 123 124

For Tax Purposes Only

Prepared by
MICHAEL BAKER, JR., INC.
 Consulting Engineers
 Rochester, Pennsylvania

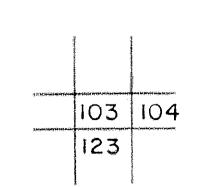
Legend

| | | | |
|-----------------------------|---|------------------------|------|
| Property line | — | Original lot line | — |
| Edge of pavement or roadway | — | Deed lot number | (15) |
| Corporation line | — | Parcel or index number | (22) |
| District line | — | Improvement | o |
| County line | — | Railroad | — |

Revisions

| | | | | |
|---|-----------------------|----|-------------|----|
| 1 | 4-15-64 | 9 | 5-15-05 HES | 17 |
| 2 | Revised to 7-1-85 | 10 | 8/27/06 SAH | 18 |
| 3 | Revised to 7-1-85 | 11 | 6-18-07 HES | 19 |
| 4 | Revised to 7-1-85 | 12 | | 20 |
| 5 | O.G.I.S 5-15-95 J.E.B | 13 | | 21 |
| 6 | O.G.I.S 12-1-96 J.E.B | 14 | | 22 |
| 7 | SLS INC. 6/22/98 DSW | 15 | | 23 |
| 8 | ESI 4/19/01 REK | 16 | | 24 |

KEY MAP



McDOWELL COUNTY
 STATE OF WEST VIRGINIA
 Office of Assessor

DISTRICT
SANDY RIVER

SHEET NO: 103

Date, Aerial Photography: April, 1961 Date, Map: July, 1962
 Photo No: Scale: 1" = 400'