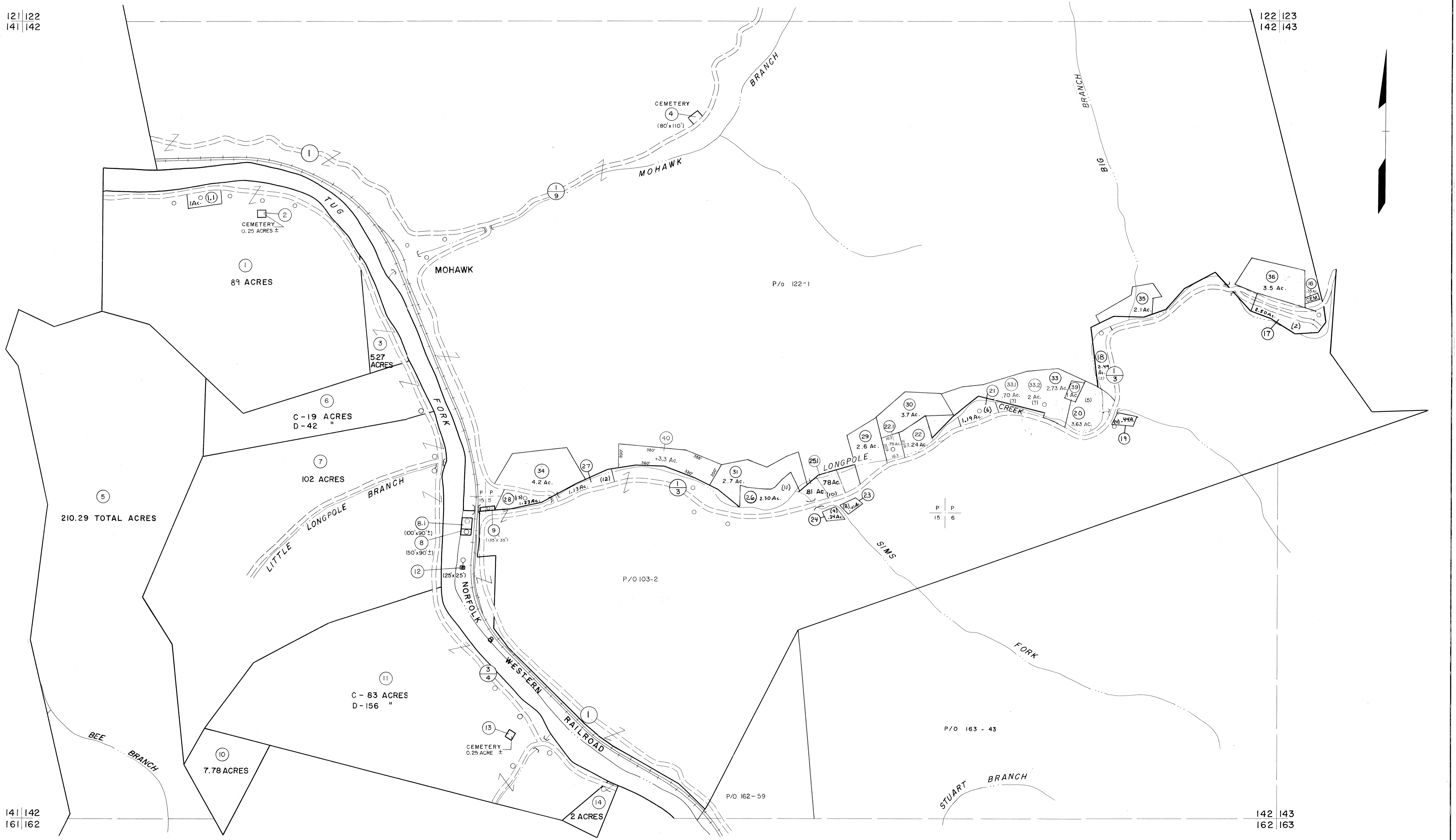


121 | 122
141 | 142

122 | 123
142 | 143

141 | 142
161 | 162

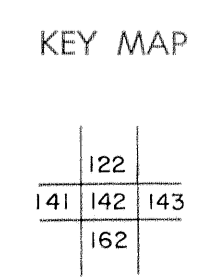
142 | 143
162 | 163



For Tax Purposes Only
 Prepared by
MICHAEL BAKER, JR., INC.
 Consulting Engineers
 Rochester, Pennsylvania

| Legend | |
|-----------------------------|------------------------|
| Property line | Original lot line |
| Edge of pavement or roadway | Deed lot number |
| Corporation line | Parcel or index number |
| District line | Improvement |
| County line | Railroad |

| Revisions | |
|-----------|--------------------------|
| 1 | 4-15-64 |
| 2 | 12-3-74 T.G. |
| 3 | Revised to 7-1-83 J.E.B. |
| 4 | July 1988 J.E.B. |
| 5 | O.G.I.S 5-15-95 J.E.B. |
| 6 | O.G.I.S 12-1-96 J.E.B. |
| 7 | SLS INC. 6/22/98 DSW |
| 8 | |
| 9 | SLS INC. 12/29/98 DSW |
| 10 | ESI 12/4/02 REK |
| 11 | |
| 12 | |
| 13 | |
| 14 | |
| 15 | |
| 16 | |
| 17 | |
| 18 | |
| 19 | |
| 20 | |
| 21 | |
| 22 | |
| 23 | |
| 24 | |



McDOWELL COUNTY
 STATE OF WEST VIRGINIA
 Office of Assessor

DISTRICT
SANDY RIVER
 SHEET NO: 142
 Date, Aerial Photography: April, 1961 Date, Map: July 1962
 Photo No: Scale: 1"=400'