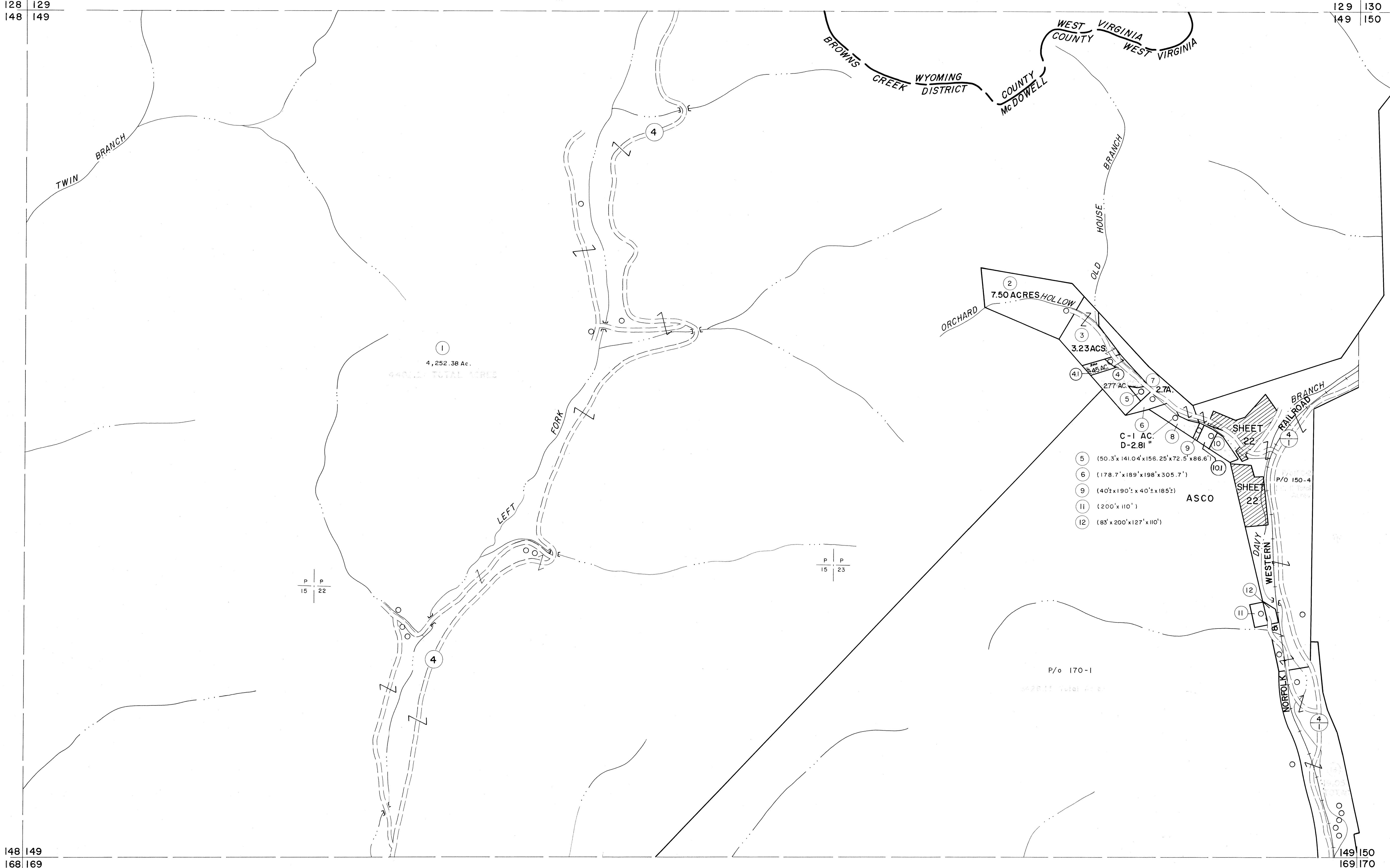


128 129  
148 149

129 130  
149 150

148 149  
168 169

149 150  
169 170



P P  
15 22

P P  
15 23

P/O 170-1

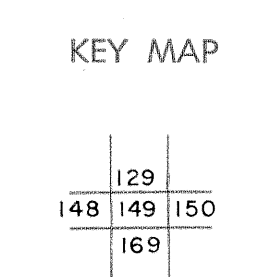
P/O 150-4

For Tax Purposes Only

Prepared by  
MICHAEL BAKER, JR., INC.  
Consulting Engineers  
Rochester, Pennsylvania

| Legend                      |           |
|-----------------------------|-----------|
| Property line               | —         |
| Edge of pavement or roadway | - - - -   |
| Corporation line            | - · - · - |
| District line               | - - - -   |
| County line                 | - - - -   |
| Original lot line           | - - - -   |
| Deed lot number             | (15)      |
| Parcel or index number      | (29)      |
| Improvement                 | ○         |
| Railroad                    | —+—       |

| Revisions |                   |    |    |
|-----------|-------------------|----|----|
| 1         | 4-15-64           | 9  | 17 |
| 2         | 12-3-74           | 10 | 18 |
| 3         | Revised to 7-1-83 | 11 | 19 |
| 4         | July 1985         | 12 | 20 |
| 5         | O.G.'S 12-1-96    | 13 | 21 |
| 6         | 4-45 5-15-05      | 14 | 22 |
| 7         |                   | 15 | 23 |
| 8         |                   | 16 | 24 |



**McDOWELL COUNTY**

STATE OF WEST VIRGINIA

Office of Assessor

DISTRICT  
**BROWNS CREEK**

SHEET NO: 149

Date, Aerial Photography: April, 1961 Date, Map: July, 1962  
Photo No: Scale: 1" = 400'