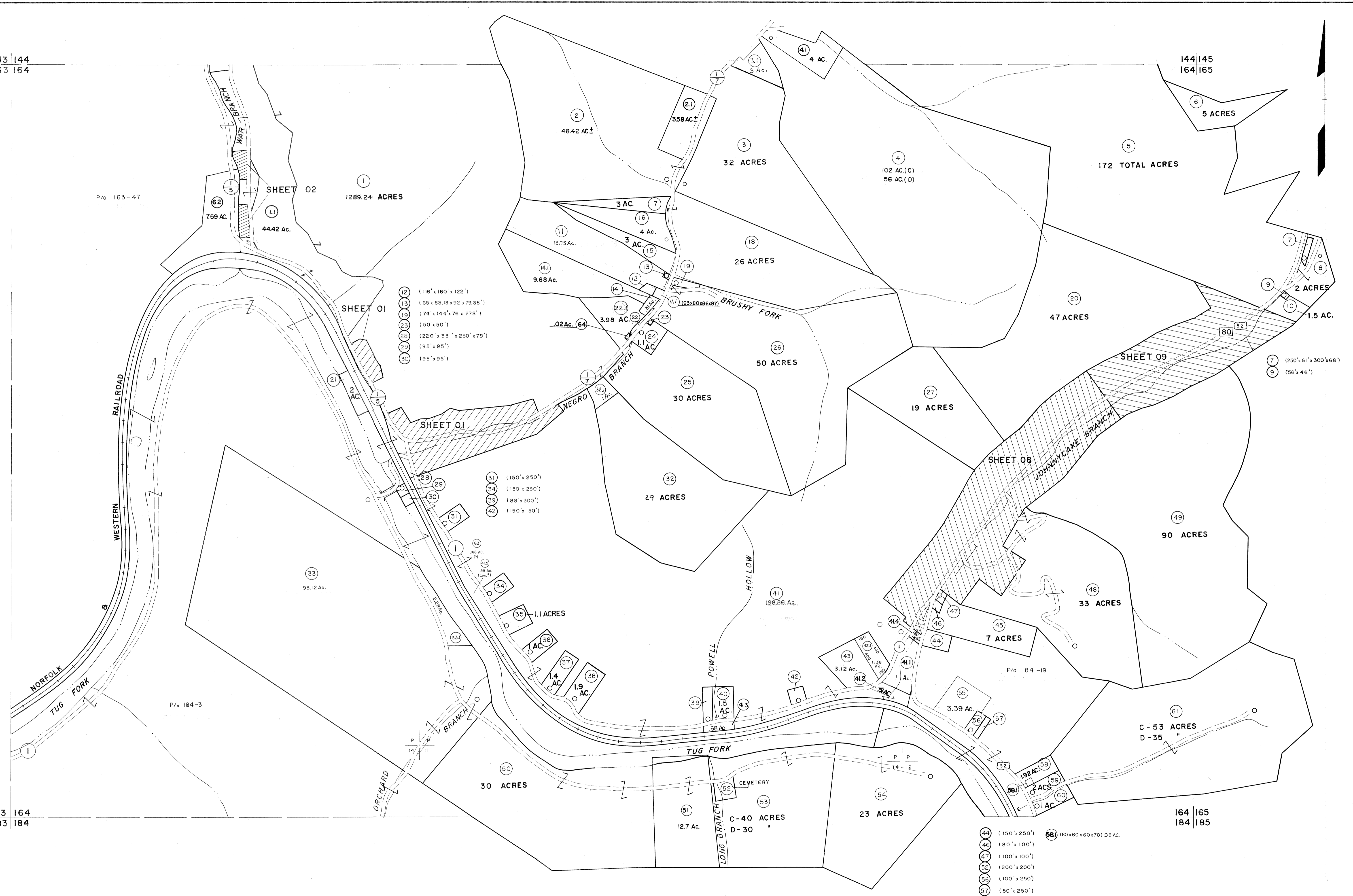


143 144  
163 164

144 145  
164 165

163 164  
183 184

164 165  
184 185



- (12) (116' x 160' x 122')
- (13) (65' x 88.13' x 92' x 79.88')
- (19) (74' x 144' x 76' x 278')
- (23) (50' x 50')
- (28) (220' x 35' x 250' x 79')
- (29) (95' x 95')
- (30) (95' x 95')

- (31) (150' x 250')
- (34) (150' x 250')
- (35) (88' x 300')
- (42) (150' x 150')

- (44) (150' x 250')
- (46) (80' x 100')
- (47) (100' x 100')
- (52) (200' x 200')
- (56) (100' x 250')
- (57) (50' x 250')
- (58) (60' x 60' x 70' x 0.8 AC.)

For Tax Purposes Only

Prepared by  
MICHAEL BAKER, JR., INC.  
Consulting Engineers  
Rochester, Pennsylvania

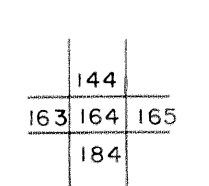
Legend

|                             |       |                        |       |
|-----------------------------|-------|------------------------|-------|
| Property line               | ----- | Original lot line      | ----- |
| Edge of pavement or roadway | ----- | Deed lot number        | (15)  |
| Corporation line            | ----- | Parcel or index number | (22)  |
| District line               | ----- | Improvement            | o     |
| County line                 | ----- | Railroad               | ----- |

Revisions

|   |                   |    |          |          |       |    |
|---|-------------------|----|----------|----------|-------|----|
| 1 | 4-15-64           | 9  | O.G.I.S  | 12-1-96  | J.E.B | 17 |
| 2 | 12-4-74           | 10 | SLS INC. | 6/22/98  | DSW   | 18 |
| 3 | Revised to 7-1-83 | 11 | SLS INC. | 12/29/98 | DSW   | 19 |
| 4 | 7-1-84            | 12 | ESI      | 4/24/01  | REK   | 20 |
| 5 | July, 1988        | 13 | 5/24/04  |          | SBH   | 21 |
| 6 | Revised to 7-1-88 | 14 | 5-15-05  | HFS      |       | 22 |
| 7 | Revised to 7-1-89 | 15 | SBH      | 12/31/05 |       | 23 |
| 8 | O.G.I.S           | 16 | 5-15-95  | J.E.B    |       | 24 |

KEY MAP



**McDOWELL COUNTY**  
STATE OF WEST VIRGINIA  
Office of Assessor

DISTRICT  
**SANDY RIVER**

**SHEET NO: 164**

Date, Aerial Photography: April, 1961 Date, Map: July, 1962  
Photo No: Scale: 1" = 400'