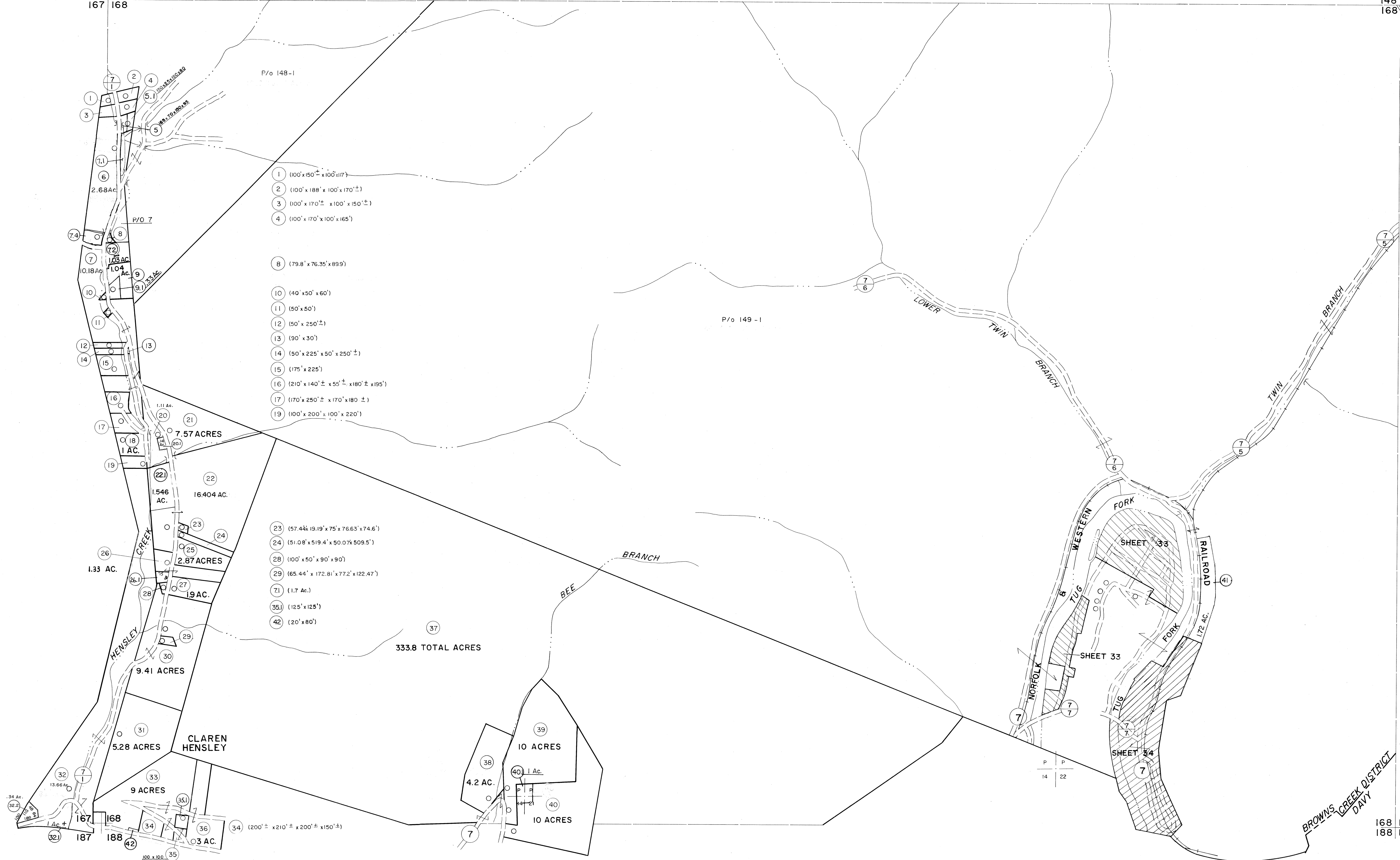


147 148
167 168

148 149
168 169



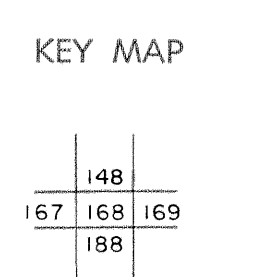
- 1 (100' x 150' ± x 100' x 117')
- 2 (100' x 188' x 100' x 170' ±)
- 3 (100' x 170' ± x 100' x 150' ±)
- 4 (100' x 170' x 100' x 165')
- 8 (79.8' x 76.35' x 89.9')
- 10 (40' x 50' x 60')
- 11 (50' x 50')
- 12 (50' x 250' ±)
- 13 (90' x 30')
- 14 (50' x 225' x 50' x 250' ±)
- 15 (175' x 225')
- 16 (210' x 140' ± x 50' ± x 180' ± x 195')
- 17 (170' x 250' ± x 170' x 180' ±)
- 19 (100' x 200' ± x 100' x 220')

- 23 (57.44' x 19.19' x 75' x 76.63' x 74.6')
- 24 (51.08' x 519.4' x 50.07' x 509.5')
- 28 (100' x 50' x 90' x 90')
- 29 (65.44' x 172.81' x 77.2' x 122.47')
- 31 (1.7 AC.)
- 35 (125' x 125')
- 42 (20' x 80')

For Tax Purposes Only
 Prepared by
MICHAEL BAKER, JR., INC.
 Consulting Engineers
 Rochester, Pennsylvania

Legend	
Property line	Original lot line
Edge of pavement or roadway	Deed lot number (15)
Corporation line	Parcel or index number (22)
District line	Improvement
County line	Railroad

Revisions			
1	4-15-64	9	O.G.I.S 5-15-95 J.E.B
2	REVISED JULY 1965 jag	10	O.G.I.S 12-1-96 J.E.B
3	12-4-74	11	
4	Revised 7-1-83 J.F.	12	
5	7-1-84 J.F.	13	
6	Revised 6-21-88 J.F.	14	
7	Revised 6-21-88 J.F.	15	
8	Revised 7-1-89 J.F.	16	



MCDOWELL COUNTY
 STATE OF WEST VIRGINIA
 Office of Assessor

DISTRICT	BROWNS CREEK
SHEET NO:	168
Date, Aerial Photography: April, 1961	Date, Map: July, 1962
Photo No:	Scale: 1" = 400'