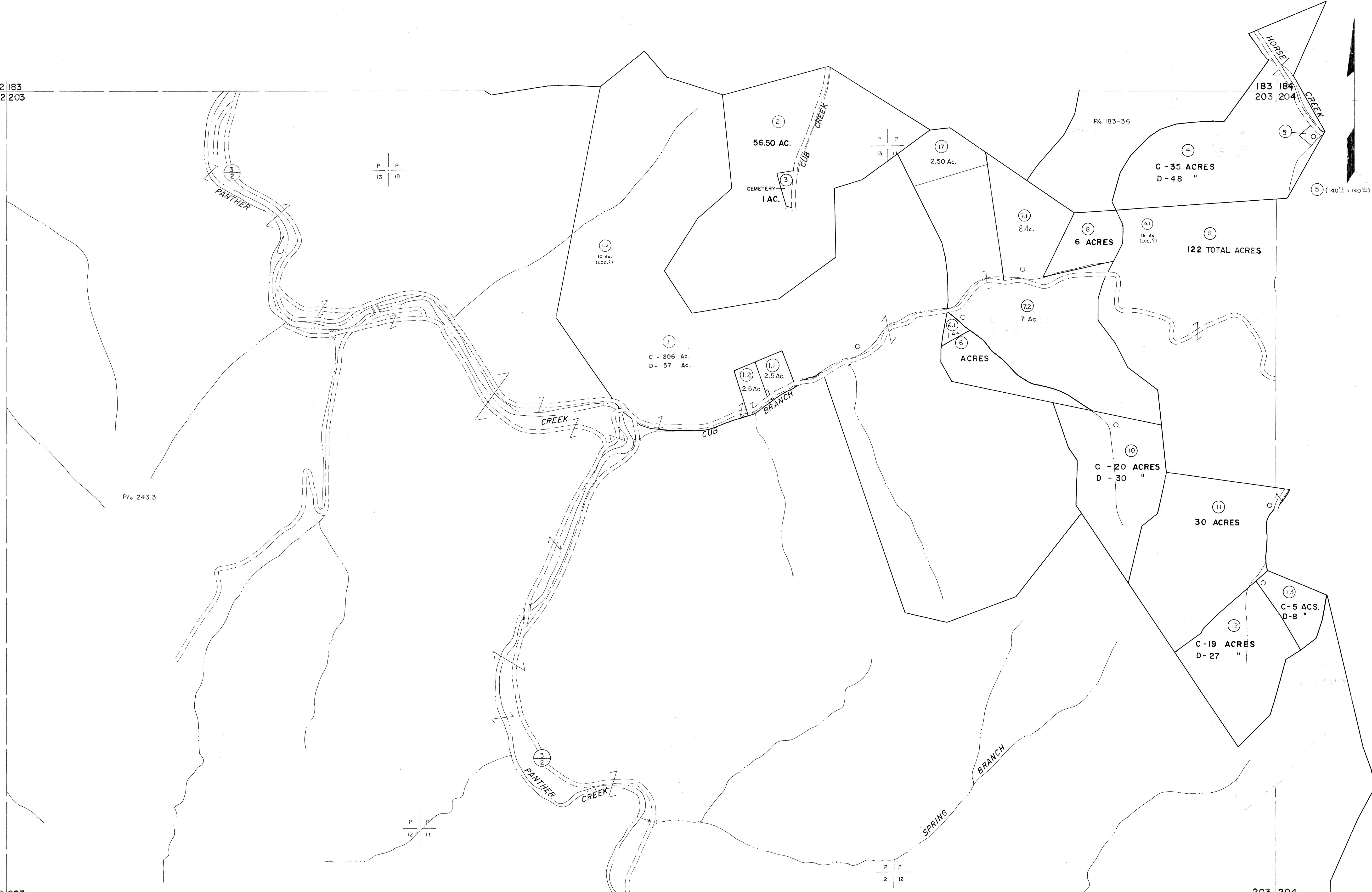


182 183  
202 203

183 184  
203 204

202 203  
222 223

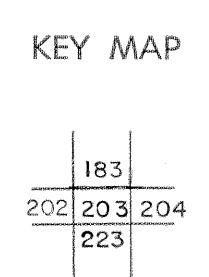
203 204  
223 224



For Tax Purposes Only  
 Prepared by  
**MICHAEL BAKER, JR., INC.**  
 Consulting Engineers  
 Rochester, Pennsylvania

Legend	
Property line	—
Edge of pavement or roadway	—
Corporation line	—
District line	—
County line	—
Original lot line	—
Deed lot number	(15)
Parcel or index number	(22)
Improvement	O
Railroad	—

Revisions					
1	4-15-64	9	S&H	12/31/05	17
2	12-5-74	10	S&H	8/27/06	18
3	7-1-84	11			19
4	7-1-84	12			20
5	July 1988	13			21
6	O.G.I.S 5-15-95	14	J.E.B		22
7	ESI 4/24/01	15	REK		23
8	5/23/04	16	S&H		24



**McDOWELL COUNTY**  
 STATE OF WEST VIRGINIA  
 Office of Assessor

DISTRICT  
**SANDY RIVER**  
 SHEET NO: 203  
 Date, Aerial Photography: April, 1961 Date, Map: July, 1962  
 Photo No: Scale: 1" = 400'