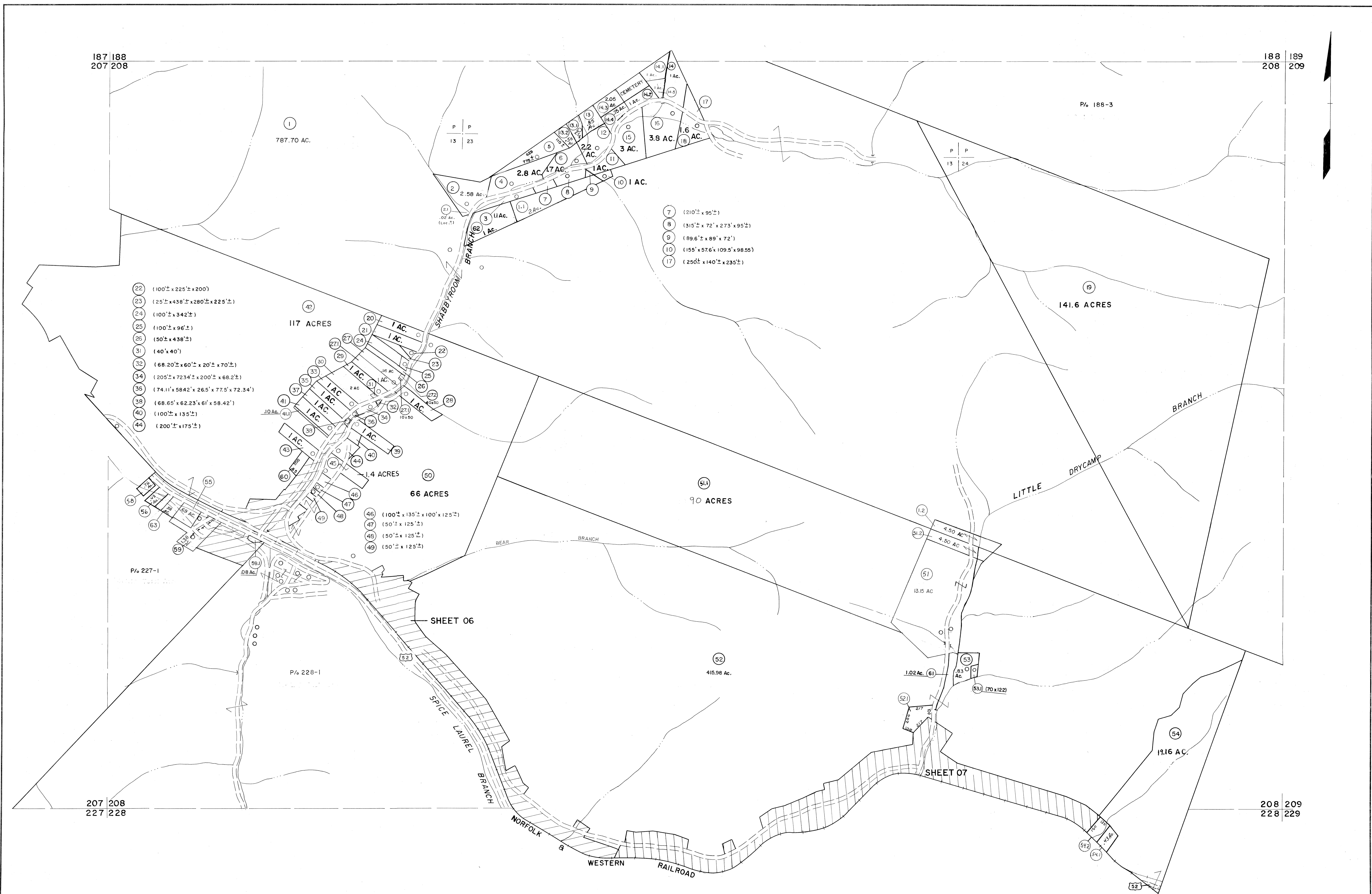


187 188
207 208

188 189
208 209



- 22 (100'± x 225'± x 200')
- 23 (25'± x 438'± x 280'± x 225'±)
- 24 (100'± x 342'±)
- 25 (100'± x 96'±)
- 26 (50'± x 438'±)
- 31 (40' x 40')
- 32 (68.20'± x 60'± x 20'± x 70'±)
- 34 (205'± x 723.4'± x 200'± x 68.2'±)
- 36 (74.11' x 584.2' x 26.5' x 77.5' x 72.34')
- 38 (68.65' x 62.23' x 61' x 58.42')
- 40 (100'± x 135'±)
- 44 (200'± x 175'±)

- 7 (210'± x 95'±)
- 8 (315'± x 72' x 273' x 95'±)
- 9 (89.6'± x 89' x 72')
- 10 (155' x 57.6' x 109.5' x 98.55')
- 17 (250'± x 140'± x 235'±)

P/6 227-1

P/6 228-1

SHEET 06

SHEET 07

207 208
227 228

208 209
228 229

For Tax Purposes Only

Prepared by
MICHAEL BAKER, JR., INC.
Consulting Engineers
Rochester, Pennsylvania

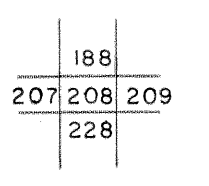
Legend

Property line	-----	Original lot line	-----
Edge of pavement or roadway	-----	Deed lot number	(15)
Corporation line	-----	Parcel or index number	(99)
District line	-----	Improvement	o
County line	-----	Railroad	-----

Revisions

1	4-15-64	9	SLS INC.	6/26/98	JWM	17
2	Rhodes 12-6-74 T.G.	10	ESI	4/24/01	REK	18
3	Revised to 7-1-83	11				19
4	7/1/84	12				20
5	Revised to 7-1-85	13				21
6	Revised to 7-1-85	14				22
7	Revised to 7-1-87	15				23
8	O.G.I.S 12-1-95	16	J.E.B			24

KEY MAP



McDOWELL COUNTY
STATE OF WEST VIRGINIA
Office of Assessor

DISTRICT
BROWNS CREEK

SHEET NO: 208

Date, Aerial Photography: April, 1961
Date, Map: July, 1962
Photo No: Scale: 1" = 400'