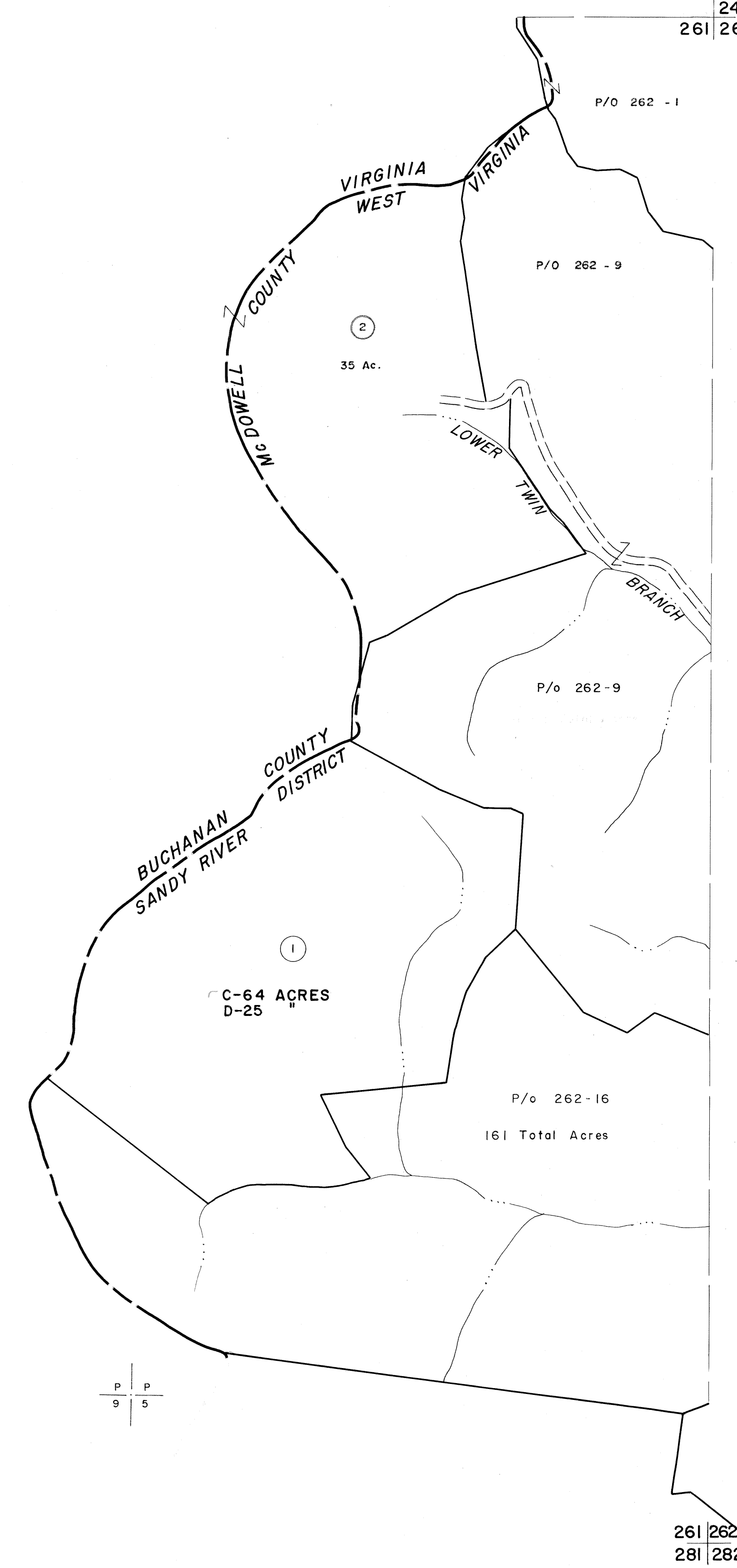


261

242  
261 262



261  
281

261 262  
281 282

P P  
9 5

**For Tax Purposes Only**

Prepared by  
**MICHAEL BAKER, JR., INC.**  
Consulting Engineers  
Rochester, Pennsylvania

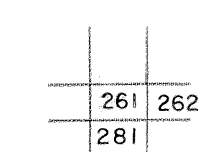
**Legend**

Property line	—————	Original lot line	-----
Edge of pavement or roadway	-----	Deed lot number	(15)
Corporation line	-----	Parcel or index number	(2)
District line	-----	Improvement	o
County line	-----	Railroad	+++++

**Revisions**

1	4-15-64	9	17
2	Revised to 7-1-83 J.E.B.	10	18
3	July 1985 J.E.B.	11	19
4	O.G.I.S 5-15-95 J.E.B.	12	20
5		13	21
6		14	22
7		15	23
8		16	24

**KEY MAP**



**MCDOWELL COUNTY**  
STATE OF WEST VIRGINIA  
Office of Assessor

DISTRICT  
**SANDY RIVER**

**SHEET NO: 261**

Date, Aerial Photography: April, 1961 Date, Map: July, 1962  
Photo No: Scale: 1" = 400'