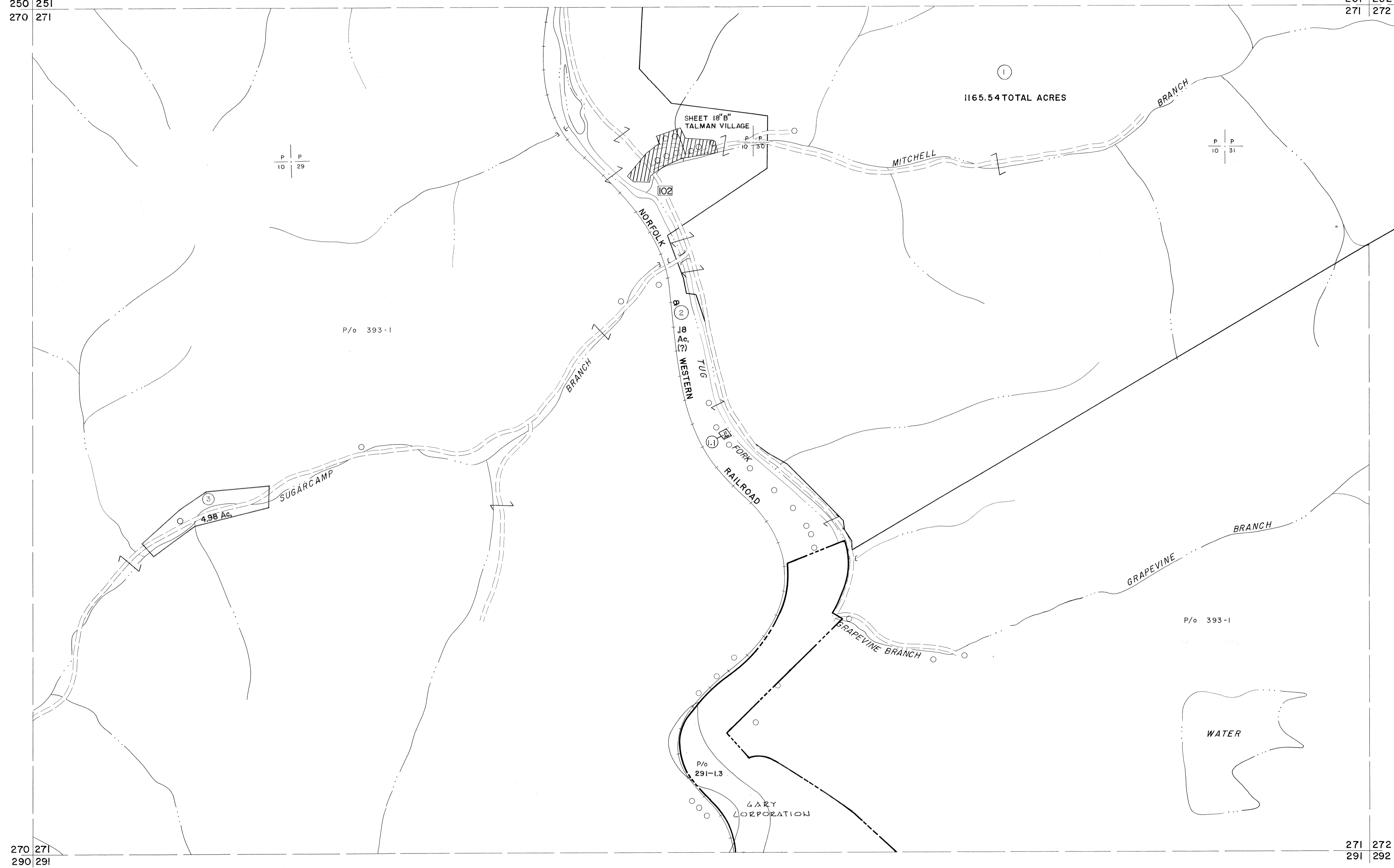


250 251
270 271

251 252
271 272



270 271
290 291

271 272
291 292

For Tax Purposes Only

Prepared by
MICHAEL BAKER, JR., INC.
Consulting Engineers
Rochester, Pennsylvania

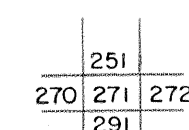
Legend

Property line	—	Original lot line	- - - - -
Edge of pavement or roadway	— · — · —	Deed lot number	(15)
Corporation line	- - - - -	Parcel or index number	(29)
District line	- · - · -	Improvement	○
County line	- - - - -	Railroad	—+—+—+—

Revisions

1	4-15-64	9	5-15-05	+4.5	17
2	4-18-72 T.J.M.	10	SBH	8/27/06	18
3	12-10-74	11			19
4	7-1-83	12			20
5	11-19-85	13			21
6	SLS INC. 6/26/98 DSW	14			22
7	SLS INC. 12/31/98 DSW	15			23
8	5/23/04	16			24

KEY MAP



McDOWELL COUNTY
STATE OF WEST VIRGINIA
Office of Assessor

DISTRICT

ADKIN

SHEET NO: 271

Date, Aerial Photography: April, 1961 Date, Map: July, 1962
Photo No: Scale: 1"=400'