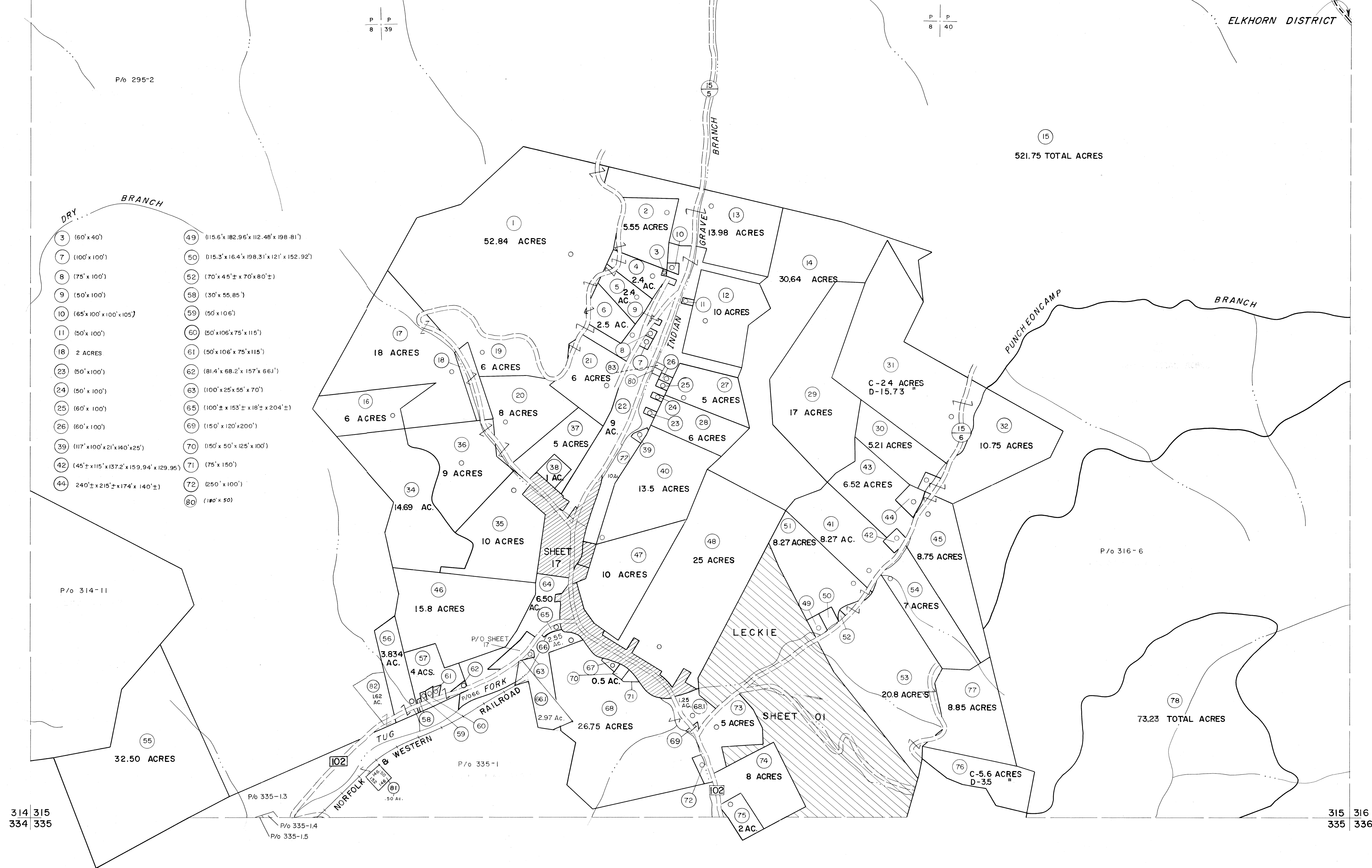


294 295
314 315

ADKIN DISTRICT
ELKHORN DISTRICT



DRY BRANCH

- 3 (60' x 40')
- 7 (100' x 100')
- 8 (75' x 100')
- 9 (50' x 100')
- 10 (65' x 100' x 100' x 105')
- 11 (50' x 100')
- 18 2 ACRES
- 23 (50' x 100')
- 24 (50' x 100')
- 25 (60' x 100')
- 26 (60' x 100')
- 39 (117' x 100' x 21' x 140' x 25')
- 42 (45' x 115' x 137.2' x 159.94' x 129.95')
- 44 (240' x 215' x 174' x 140' ±)
- 49 (115.6' x 182.96' x 112.48' x 198.81')
- 50 (115.3' x 16.4' x 198.31' x 121' x 152.92')
- 52 (70' x 45' ± x 70' x 80' ±)
- 58 (30' x 55.85')
- 59 (50' x 106')
- 60 (50' x 106' x 75' x 115')
- 61 (50' x 106' x 75' x 115')
- 62 (81.4' x 68.2' x 157' x 66.1')
- 63 (100' x 25' x 55' x 70')
- 65 (100' x 153' ± x 18' ± x 204' ±)
- 69 (150' x 120' x 200')
- 70 (150' x 50' x 125' x 100')
- 71 (75' x 150')
- 72 (250' x 100')
- 80 (180' x 50')

314 315
334 335

315 316
335 336

For Tax Purposes Only

Prepared by
MICHAEL BAKER, JR., INC.
Consulting Engineers
Rochester, Pennsylvania

Legend	
Property line	—
Edge of pavement or roadway	—
Corporation line	—
District line	—
County line	—
Original lot line	—
Deed lot number	(15)
Parcel or index number	(22)
Improvement	○
Railroad	—

Revisions	
1	4-15-64
2	12-5-74 D.A.E.
3	7-1-83 L.E.S.
4	1-1-88 J.E.B.
5	Revised 6-7-88 J.E.B.
6	Revised 7-1-89 J.E.B.
7	O.G.I.S. 5-15-95 J.E.B.
8	SLS INC. 6/26/98 J.W.M.
9	SLS INC. 1/4/99 D.S.W.
10	5/23/04 S.B.H.
11	
12	
13	
14	
15	
16	
17	
18	
19	
20	
21	
22	
23	
24	

KEY MAP

McDOWELL COUNTY
STATE OF WEST VIRGINIA
Office of Assessor

DISTRICT
ADKIN

SHEET NO: 315

Date, Aerial Photography: April, 1961
Photo No: _____

Date, Map: July, 1962
Scale: 1" = 400'