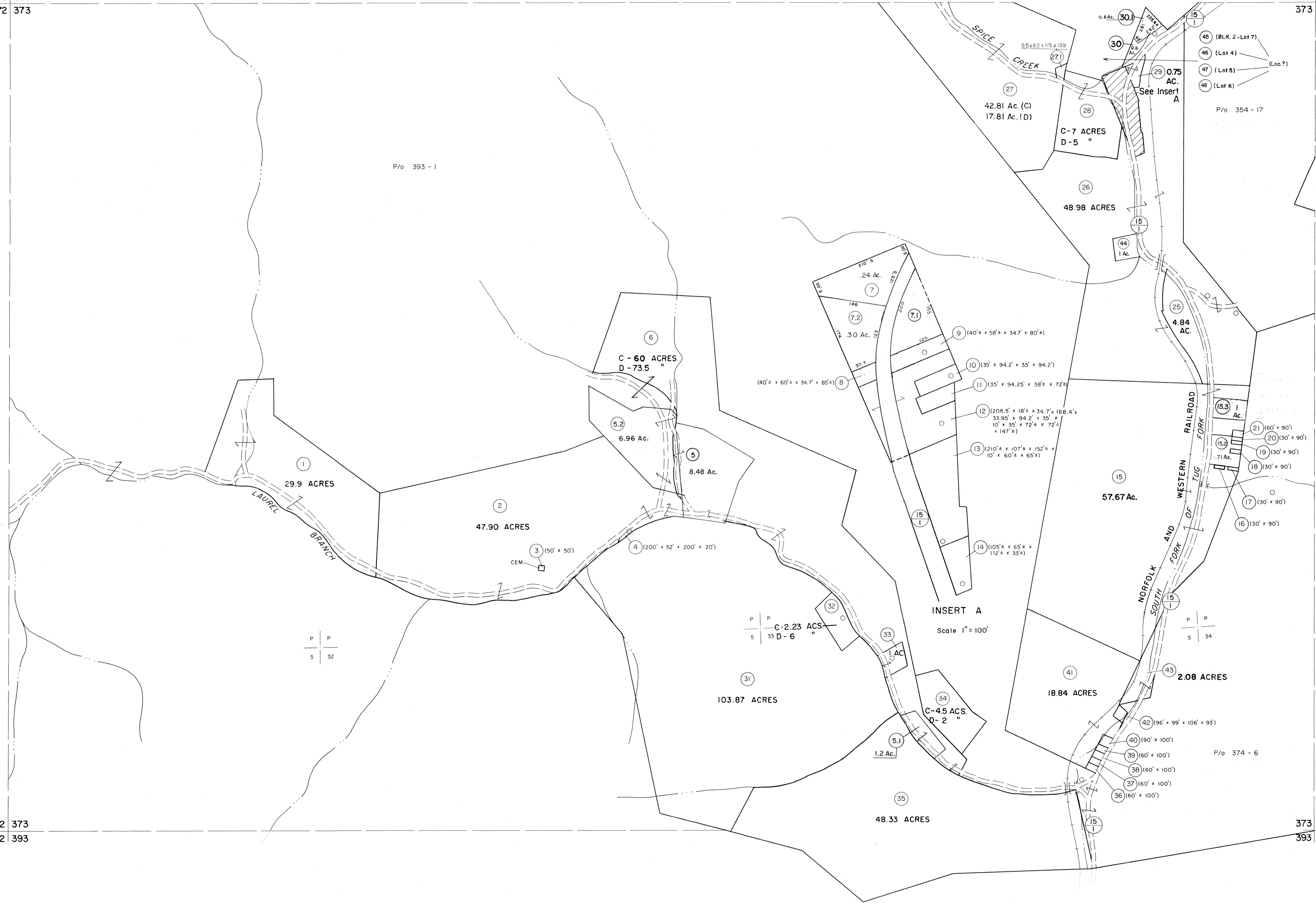


352 353
372 373

353 354
373 374

372 373
392 393

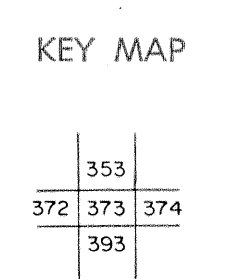
373 374
393 394



For Tax Purposes Only
 Prepared by
MICHAEL BAKER, JR., INC.
 Consulting Engineers
 Rochester, Pennsylvania

Legend	
Property line	Original lot line
Edge of pavement or roadway	Deed lot number
Corporation line	Parcel or index number
District line	Improvement
County line	Railroad

Revisions					
1	4-15-64	9	5-15-05	HAS	17
2	12-11-74	10	S&H	12/31/05	18
3	To 7-1-1983 C.P.	11	S&H	8/25/06	19
4		12			20
5		13			21
6		14			22
7	SLS INC. 6/26/98	15	JWM		23
8	ES! 4/26/01	16	REK		24



MCDOWELL COUNTY
 STATE OF WEST VIRGINIA
 Office of Assessor

DISTRICT **ADKIN**
SHEET NO: 373
 Date, Aerial Photography: April, 1961 Date, Map: July, 1962
 Photo No: Scale: 1" = 400'