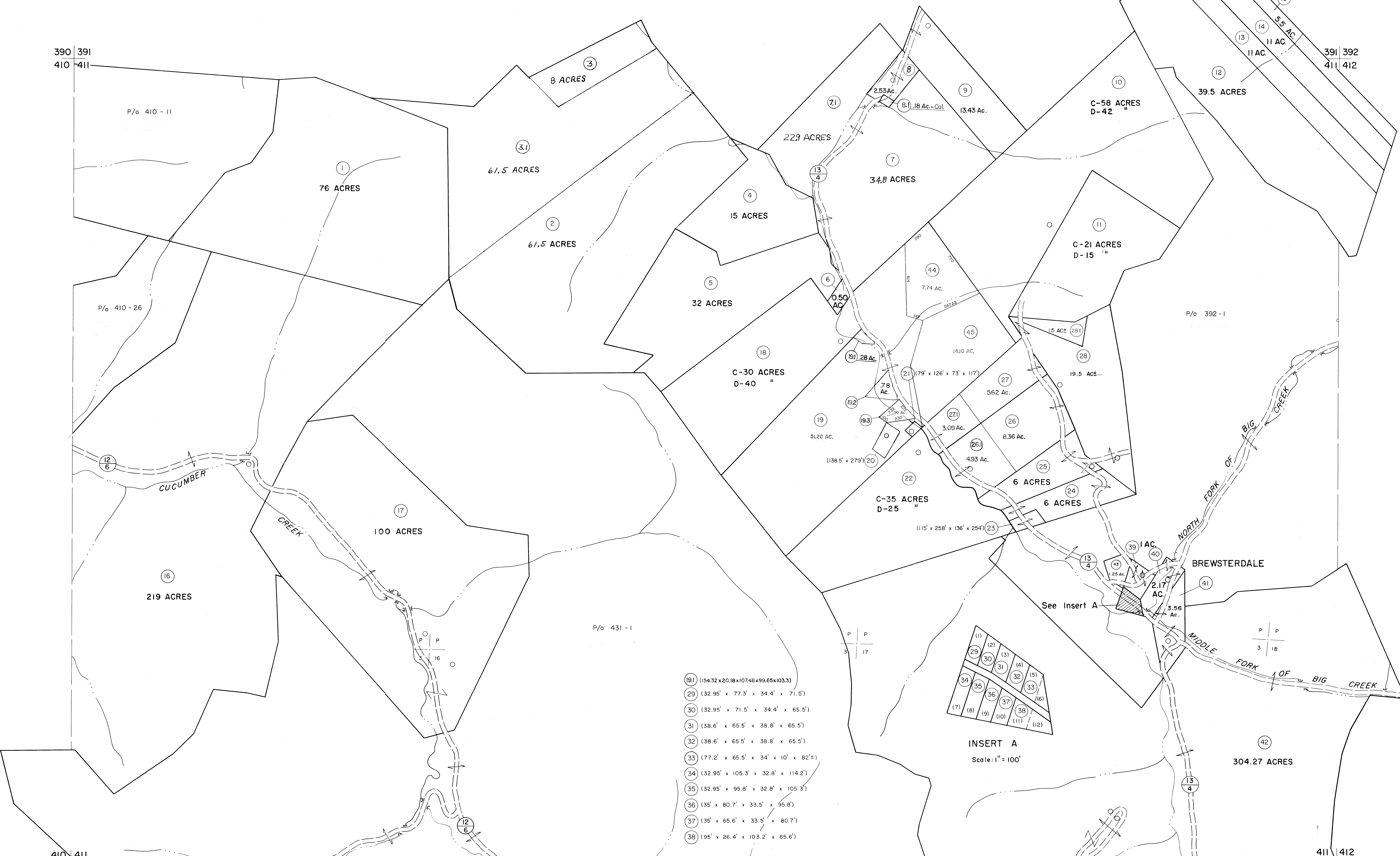


390 391  
410 411

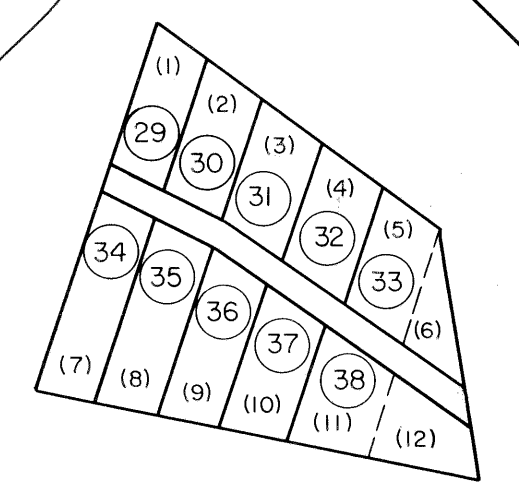
391 392  
411 412

410 411  
430 431

411 412  
431 432



- (19) (154.32 x 20.18 x 107.48 x 99.65 x 103.3)
- (29) (32.95' x 77.3' x 34.4' x 71.5')
- (30) (32.95' x 71.5' x 34.4' x 65.5')
- (31) (38.6' x 65.5' x 38.8' x 65.5')
- (32) (38.6' x 65.5' x 38.8' x 65.5')
- (33) (77.2' x 65.5' x 34' x 10' x 82'±)
- (34) (32.95' x 105.3' x 32.8' x 114.2')
- (35) (32.95' x 95.8' x 32.8' x 105.3')
- (36) (35' x 80.7' x 33.5' x 95.8')
- (37) (35' x 65.6' x 33.5' x 80.7')
- (38) (95' x 26.4' x 103.2' x 65.6')



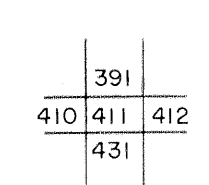
Legend

|                             |       |                        |         |
|-----------------------------|-------|------------------------|---------|
| Property line               | ————— | Original lot line      | -----   |
| Edge of pavement or roadway | ----- | Dead lot number        | (15)    |
| Corporation line            | ----- | Parcel or index number | (29)    |
| District line               | ----- | Improvement            | o       |
| County line                 | ----- | Railroad               | —+—+—+— |

Revisions

| No. | Description      | Date | By    | Checked     |
|-----|------------------|------|-------|-------------|
| 1   | 4-15-64          | 9    | ESI   | 4/26/01 REK |
| 2   | 12-12-74         | 10   |       |             |
| 3   | 11/1/83          | 11   |       |             |
| 4   | 11/1/83          | 12   |       |             |
| 5   | July 1985        | 13   |       |             |
| 6   | O.G.I.S 5-15-95  | 14   | J.E.B |             |
| 7   | O.G.I.S 12-1-96  | 15   | J.E.B |             |
| 8   | SLS INC. 6/29/98 | 16   | J.W.M |             |

KEY MAP



**MCDOWELL COUNTY**  
STATE OF WEST VIRGINIA  
Office of Assessor

DISTRICT  
**BIG CREEK**

SHEET NO: 411

Date, Aerial Photography: April, 1961 Date, Map: July, 1962  
Photo No: Scale: 1" = 400'

For Tax Purposes Only  
Prepared by  
**MICHAEL BAKER, JR., INC.**  
Consulting Engineers  
Rochester, Pennsylvania