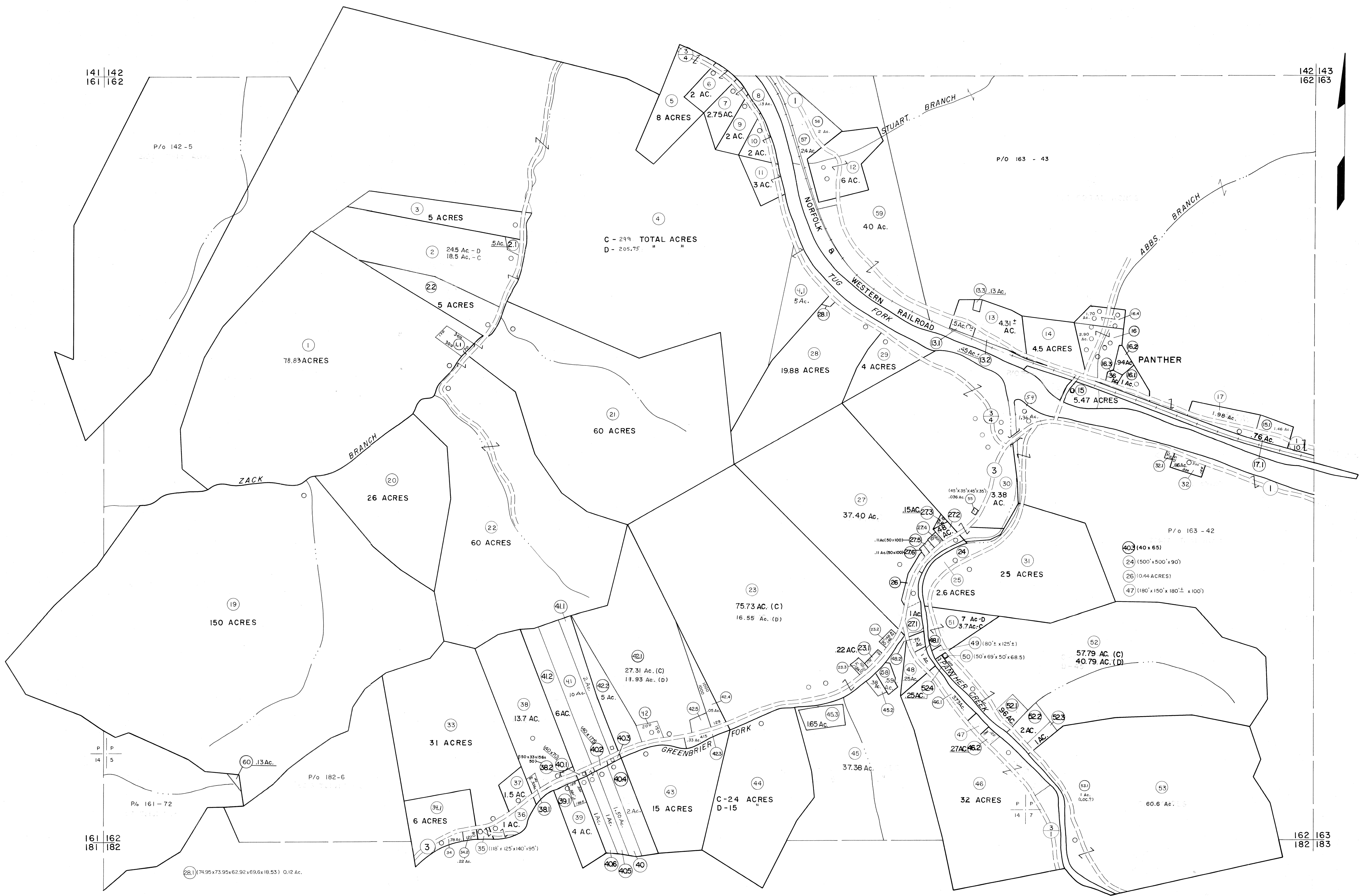


141 | 142
161 | 162

142 | 143
162 | 163



P 14
P 5

161 | 162
181 | 182

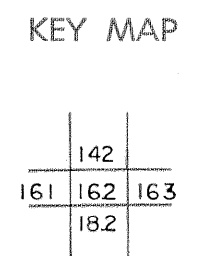
162 | 163
182 | 183

For Tax Purposes Only

Prepared by
MICHAEL BAKER, JR., INC.
Consulting Engineers
Rochester, Pennsylvania

Legend	
Property line	—
Edge of pavement or roadway	—
Corporation line	—
District line	—
County line	—
Original lot line	—
Deed lot number	(15)
Parcel or index number	(99)
Improvement	o
Railroad	—

Revisions			
1	4-15-64	9	O.G.I.S. 12-1-96 J.E.B.
2	12-4-74	10	SLS INC. 6/22/98 DSW
3	Revised to 7-1-85	11	ESI 4/24/01 REK
4	7-1-84	12	ESI 12/4/02 REK
5	July 1985	13	5/24/04 S&H
6	Revised to 7-1-88	14	8/27/06 S&H
7	Revised to 7-1-89	15	
8	O.G.I.S. 5-15-95 J.E.B.	16	



McDOWELL COUNTY
STATE OF WEST VIRGINIA
Office of Assessor

DISTRICT	
SANDY RIVER	
SHEET NO:	162
Date, Aerial Photography:	April, 1961
Photo No:	
Date, Map:	July, 1962
Scale:	1" = 400'