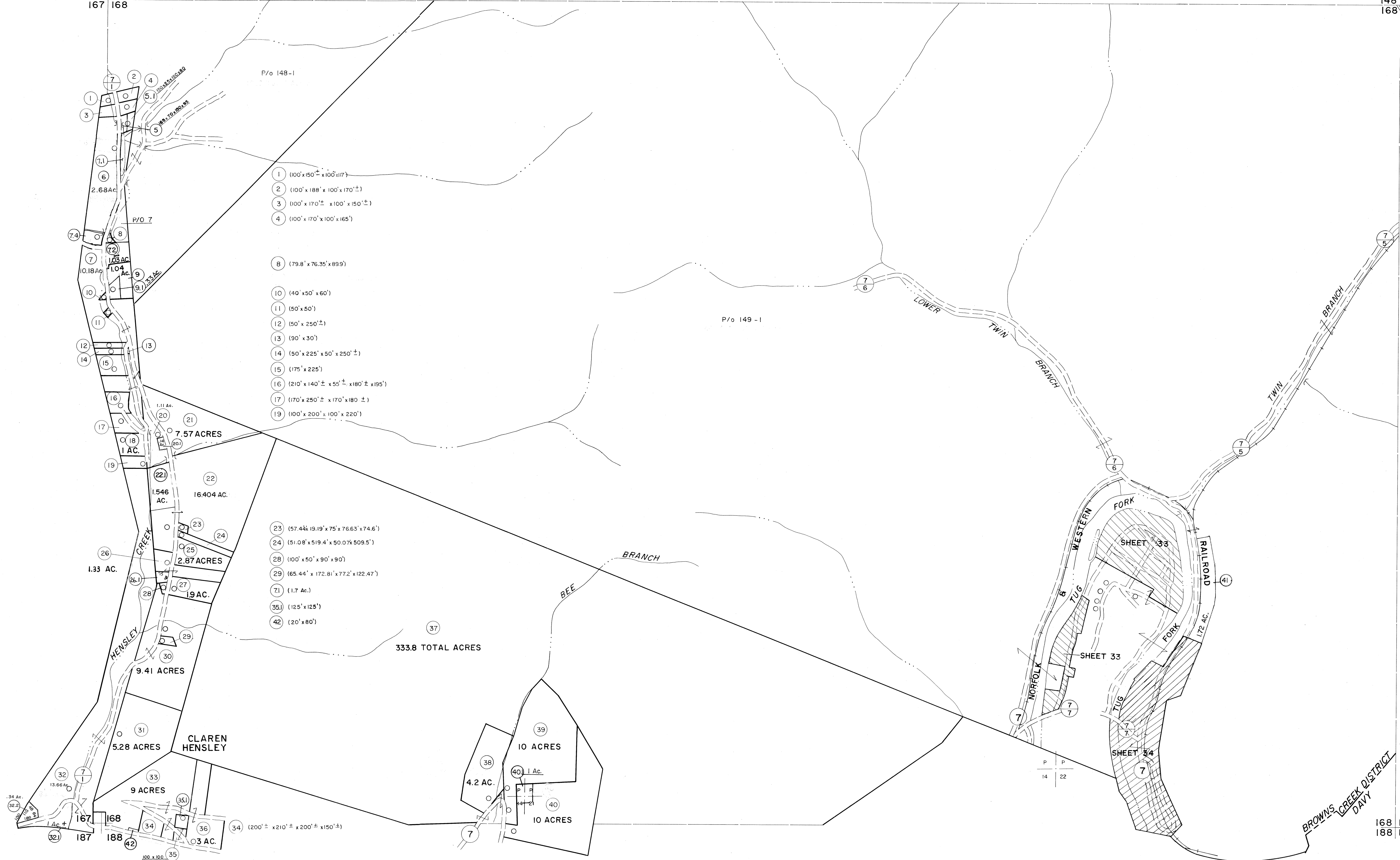


147 148
167 168

148 149
168 169



- 1 (100' x 150' ± x 100' x 117')
- 2 (100' x 188' x 100' x 170' ±)
- 3 (100' x 170' ± x 100' x 150' ±)
- 4 (100' x 170' x 100' x 165')
- 8 (79.8' x 76.35' x 89.9')
- 10 (40' x 50' x 60')
- 11 (50' x 50')
- 12 (50' x 250' ±)
- 13 (90' x 30')
- 14 (50' x 225' x 50' x 250' ±)
- 15 (175' x 225')
- 16 (210' x 140' ± x 50' ± x 180' ± x 195')
- 17 (170' x 250' ± x 170' x 180' ±)
- 19 (100' x 200' ± x 100' x 220')

- 23 (57.44' x 19.19' x 75' x 76.63' x 74.6')
- 24 (51.08' x 519.4' x 50.07' x 509.5')
- 28 (100' x 50' x 90' x 90')
- 29 (65.44' x 172.81' x 77.2' x 122.47')
- 31 (1.7 AC.)
- 35 (125' x 125')
- 42 (20' x 80')

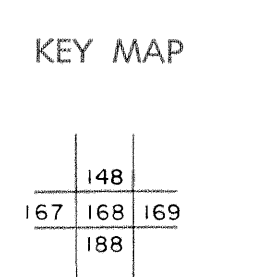
333.8 TOTAL ACRES

For Tax Purposes Only

Prepared by
MICHAEL BAKER, JR., INC.
Consulting Engineers
Rochester, Pennsylvania

Legend	
Property line	Original lot line
Edge of pavement or roadway	Deed lot number (15)
Corporation line	Parcel or index number (22)
District line	Improvement
County line	Railroad

Revisions			
1	4-15-64	9	O.G.I.S 5-15-95 J.E.B
2	REVISED JULY 1965 jag	10	O.G.I.S 12-1-96 J.E.B
3	12-4-74	11	
4	Revised 7-1-83 J.F.	12	
5	7-1-84	13	
6	Revised 6-21-88 J.F.	14	
7	Revised 6-21-88 J.F.	15	
8	Revised 7-1-89 J.F.	16	



McDOWELL COUNTY
STATE OF WEST VIRGINIA
Office of Assessor

DISTRICT
BROWNS CREEK

SHEET NO: 168

Date, Aerial Photography: April, 1961
Photo No:

Date, Map: July, 1962
Scale: 1" = 400'