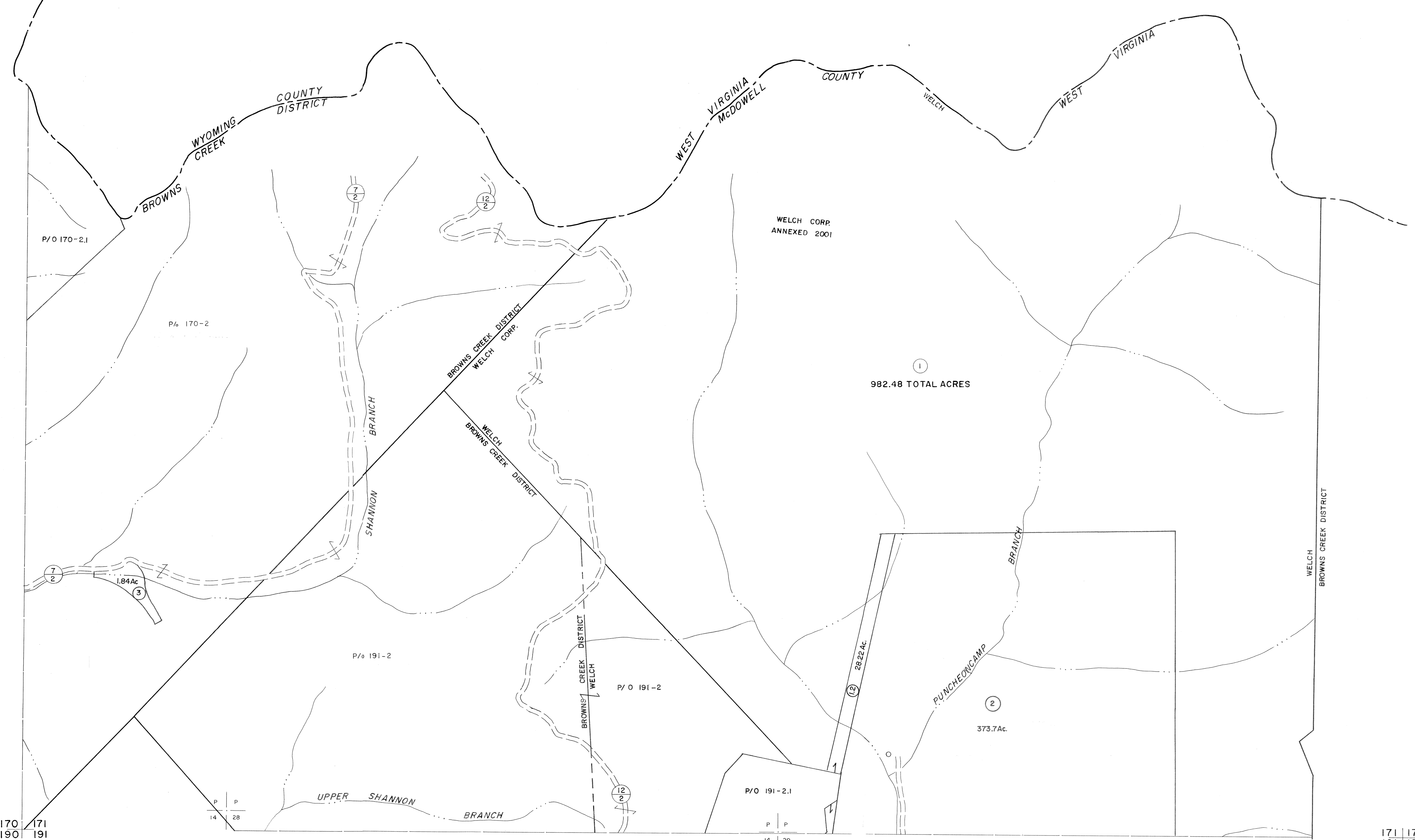


150
170 | 171

171 | 172



For Tax Purposes Only

Prepared by
MICHAEL BAKER, JR., INC.
Consulting Engineers
Rochester, Pennsylvania

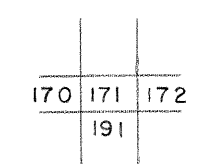
Legend

| | | | |
|-----------------------------|-----------|------------------------|-----------|
| Property line | — | Original lot line | - - - - - |
| Edge of pavement or roadway | — | Deed lot number | (15) |
| Corporation line | — | Parcel or index number | (99) |
| District line | - - - - - | Improvement | O |
| County line | - - - - - | Railroad | + |

Revisions

| | | | |
|---|-------------------|----|----|
| 1 | 4-15-64 | 9 | 17 |
| 2 | Revised to 7-1-63 | 10 | 18 |
| 3 | 1/24/65 | 11 | 19 |
| 4 | O.G.I.S 5-15-95 | 12 | 20 |
| 5 | O.G.I.S 12-1-96 | 13 | 21 |
| 6 | 6-18-07 | 14 | 22 |
| 7 | | 15 | 23 |
| 8 | | 16 | 24 |

KEY MAP



McDOWELL COUNTY
STATE OF WEST VIRGINIA
Office of Assessor

DISTRICT
BROWNS CREEK

SHEET NO: 171

Date, Aerial Photography: April, 1961
Photo No: _____
Date, Map: July, 1962
Scale: 1" = 400'