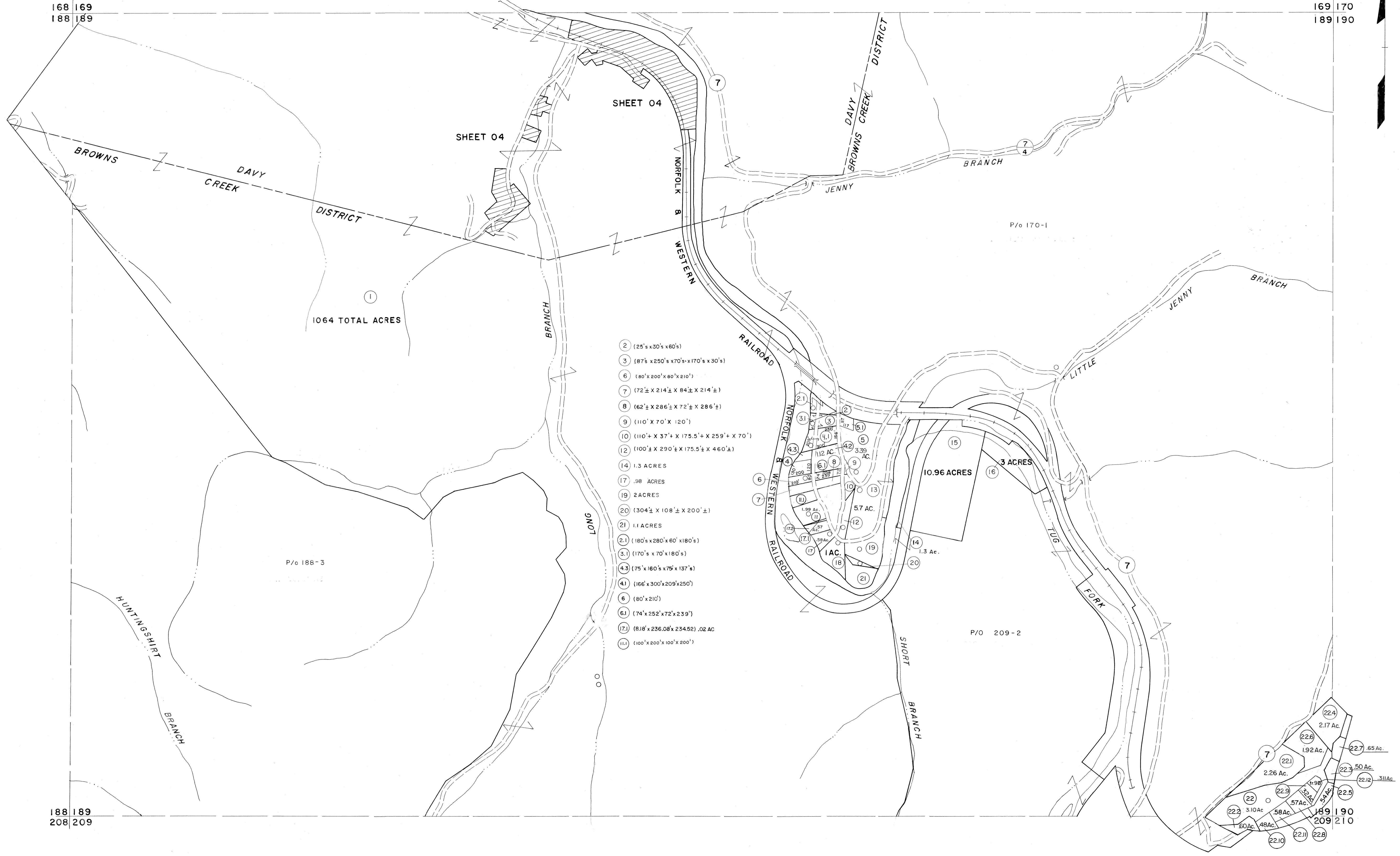


168 169
188 189

169 170
189 190

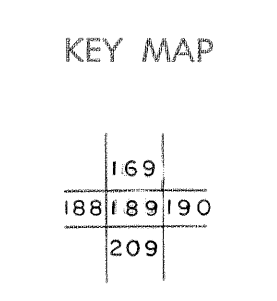


- 2 (25' x 30' x 80')
- 3 (87' x 250' x 70' x 170' x 30')
- 6 (80' x 200' x 80' x 210')
- 7 (72' x 214' x 84' x 214')
- 8 (62' x 286' x 72' x 286')
- 9 (110' x 70' x 120')
- 10 (110' x 37' x 175.5' x 259' x 70')
- 12 (100' x 290' x 175.5' x 460')
- 14 1.3 ACRES
- 17 .98 ACRES
- 19 2 ACRES
- 20 (304' x 108' x 200')
- 21 1.1 ACRES
- 21 (180' x 280' x 60' x 180')
- 31 (170' x 70' x 180')
- 43 (75' x 160' x 75' x 137')
- 41 (166' x 300' x 209' x 250')
- 6 (80' x 210')
- 61 (74' x 252' x 72' x 239')
- 171 (818' x 236.08' x 234.52) .02 AC
- 111 (100' x 200' x 100' x 200')

For Tax Purposes Only
 Prepared by
MICHAEL BAKER, JR., INC.
 Consulting Engineers
 Rochester, Pennsylvania

Legend	
Property line	—
Edge of pavement or roadway	—
Corporation line	—
District line	—
County line	—
Original lot line	—
Deed lot number	(15)
Parcel or index number	(22)
Improvement	o
Railroad	—

Revisions						
1	4-15-64	9	ESI	12/4/02	REK	17
2	12-5-74	T.G.	10	5/23/04	S.B.H	18
3	Revised to 7-1-88	RSB	11	5-15-05	H.S.	19
4	7/1/84	RSB	12	S.B.H	12/31/05	20
5	Sub. MS	RSB	13			21
6	O.G.I.S 5-15-95	J.E.B	14			22
7	O.G.I.S 12-1-96	J.E.B	15			23
8			16			24



MCDOWELL COUNTY
 STATE OF WEST VIRGINIA
 Office of Assessor

DISTRICT
BROWNS CREEK
 SHEET NO: 189
 Date, Aerial Photography: April, 1961 Date, Map: July, 1962
 Photo No: Scale: 1" = 400'