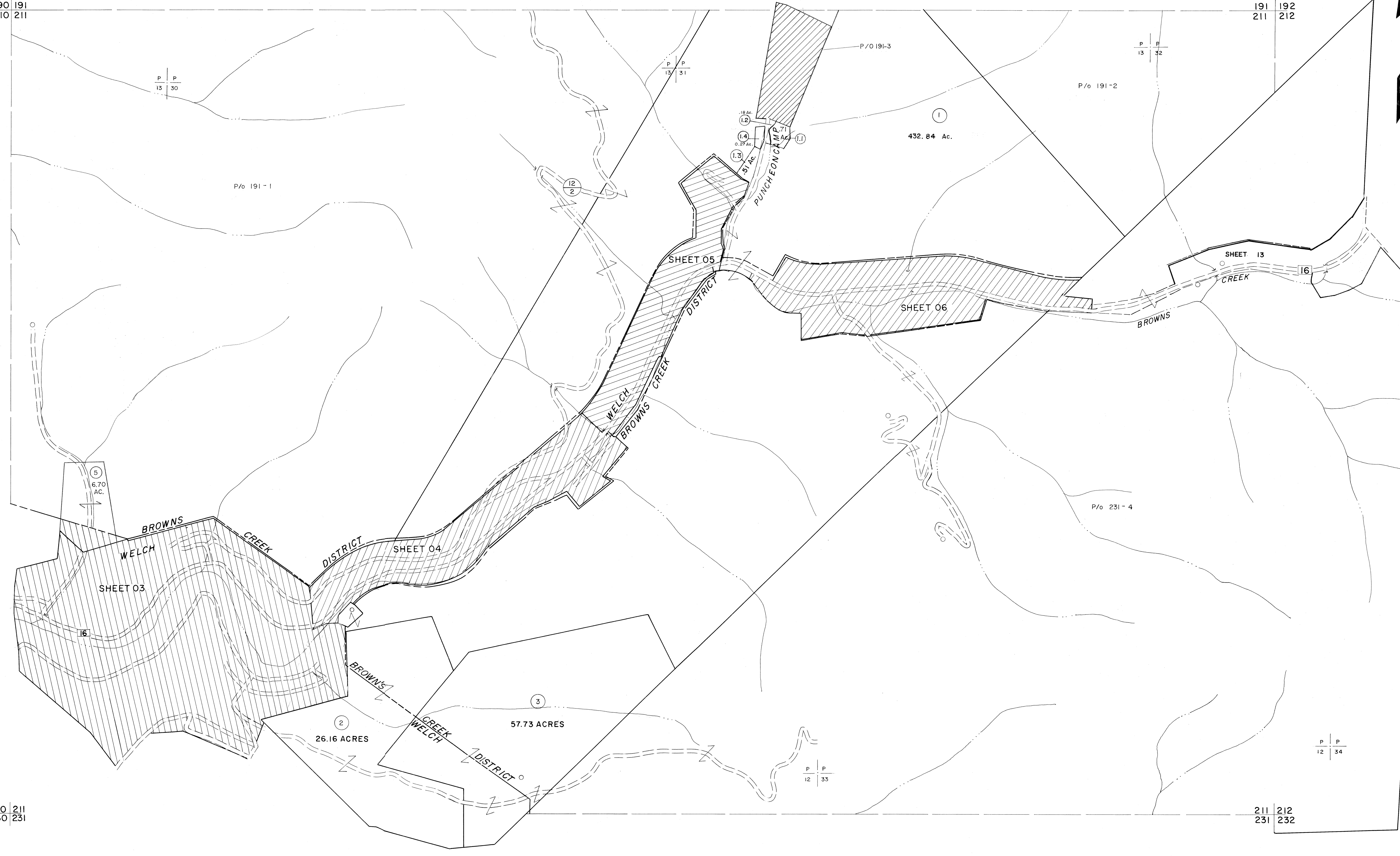


190 191  
210 211

191 192  
211 212

210 211  
230 231

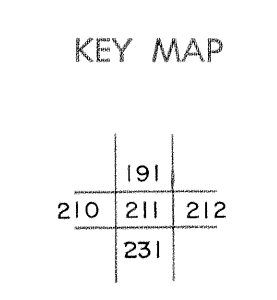
211 212  
231 232



For Tax Purposes Only  
 Prepared by  
**MICHAEL BAKER, JR., INC.**  
 Consulting Engineers  
 Rochester, Pennsylvania

Legend	
Property line	Original lot line
Edge of pavement or roadway	Deed lot number
Corporation line	Parcel or index number
District line	Improvement
County line	Railroad

Revisions			
1	4-15-64	9	ESI 4/24/01 REK 17
2	12-6-74	10	
3	Revised to 7-1-85	11	
4	Revised to 1-1-88	12	
5	Revised to 7-1-88	13	
6	O.G. I.S. 5-15-95	14	J.E.B. 14
7	SLS INC. 6/25/98	15	JWM 15
8	SLS INC. 12/30/98	16	DSW 16



**MCDOWELL COUNTY**  
 STATE OF WEST VIRGINIA  
 Office of Assessor

DISTRICT  
**BROWNS CREEK-WELCH**  
 SHEET NO: 211  
 Date, Aerial Photography: April, 1961 Date, Map: July, 1962  
 Photo No: Scale: 1" = 400'