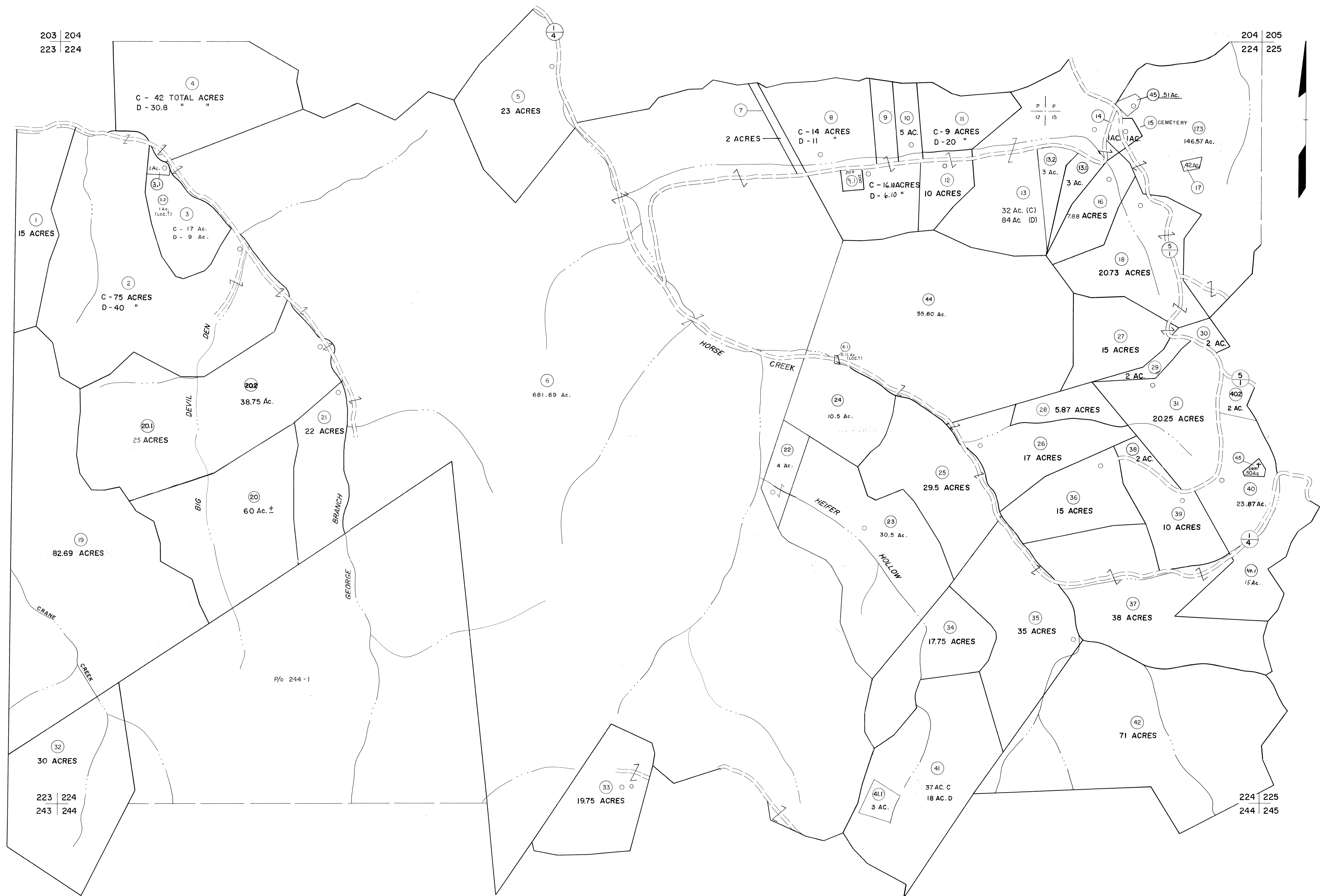


203 | 204  
223 | 224

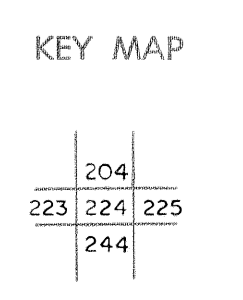
204 | 205  
224 | 225



**For Tax Purposes Only**  
Prepared by  
**MICHAEL BAKER, JR., INC.**  
Consulting Engineers  
Rochester, Pennsylvania

| Legend                      |                        |
|-----------------------------|------------------------|
| Property line               | Original lot line      |
| Edge of pavement or roadway | Deed lot number        |
| Corporation line            | Parcel or index number |
| District line               | Improvement            |
| County line                 | Railroad               |

| Revisions |                         |
|-----------|-------------------------|
| 1         | 4-15-64                 |
| 2         | 12-6-74 T.G.            |
| 3         | Revised to 7-1-83 S.H.  |
| 4         | 7-1-84 L.E.S.           |
| 5         | July 1988 L.L.          |
| 6         | Revised to 7-1-88 S.H.  |
| 7         | Revised to 7-1-89 S.H.  |
| 8         | O.G.I.S. 5-15-95 J.E.B. |
| 9         | SLS INC. 12/30/98 DSW   |
| 10        | ESI 4/24/01 REK         |
| 11        | 5/23/04 S.B.H.          |
| 12        | 5-15-05 J.E.S.          |
| 13        | 8/27/06 S.B.H.          |
| 14        |                         |
| 15        |                         |
| 16        |                         |
| 17        |                         |
| 18        |                         |
| 19        |                         |
| 20        |                         |
| 21        |                         |
| 22        |                         |
| 23        |                         |
| 24        |                         |



**McDOWELL COUNTY**  
STATE OF WEST VIRGINIA  
Office of Assessor

DISTRICT  
**SANDY RIVER**  
SHEET NO: 224  
Date, Aerial Photography: April, 1961  
Photo No: \_\_\_\_\_  
Date, Map: July, 1962  
Scale: 1" = 400'