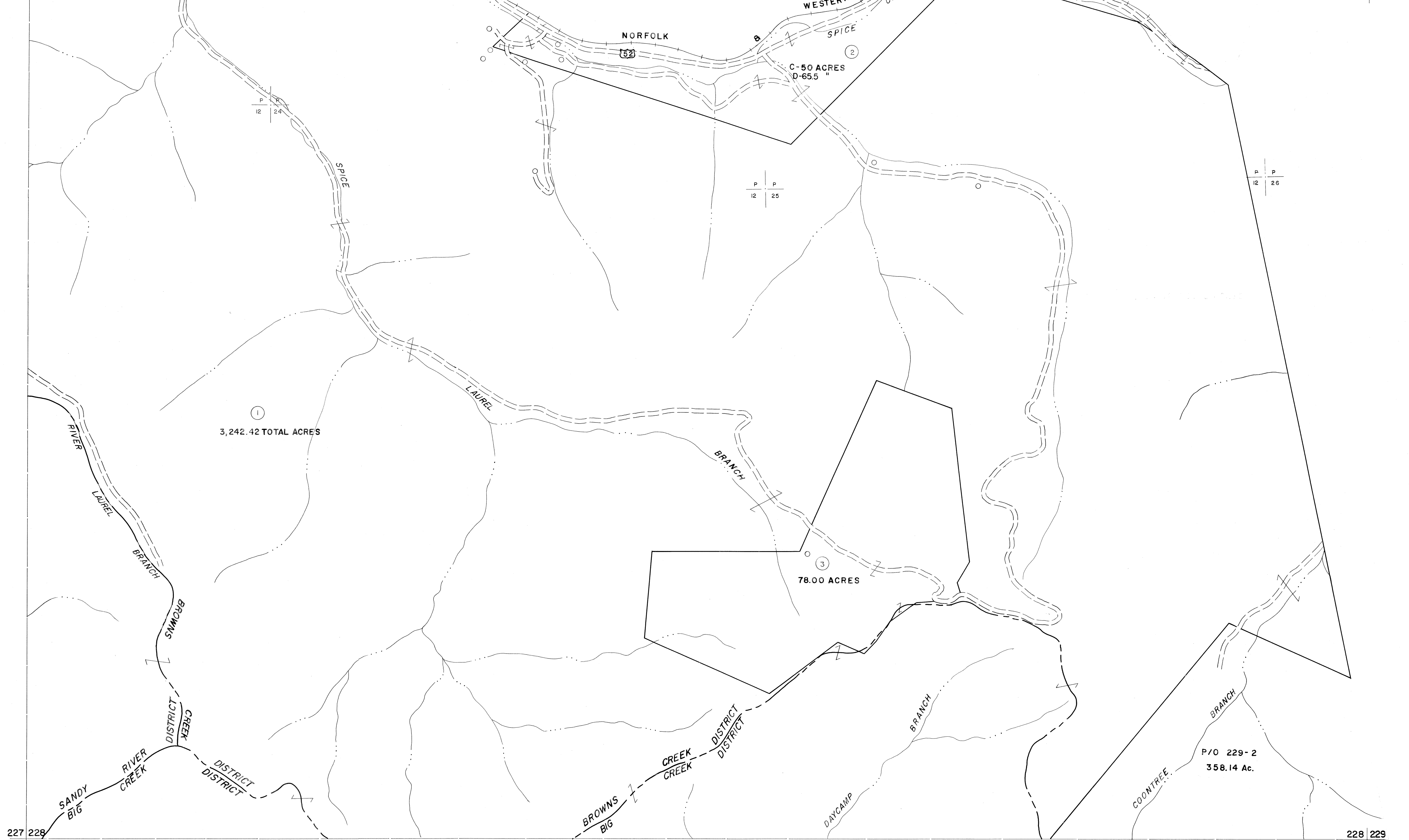


207 208  
227 228

208 209  
228 229



For Tax Purposes Only

Prepared by  
MICHAEL BAKER, JR., INC.  
Consulting Engineers  
Rochester, Pennsylvania

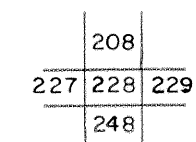
Legend

- Property line ————
- Edge of pavement or roadway - - - - -
- Corporation line - - - - -
- District line - - - - -
- County line - - - - -
- Original lot line - - - - -
- Deed lot number (15)
- Parcel or index number (29)
- Improvement •
- Railroad ○

Revisions

1	4-15-64	9	17
2	Revised to 7-1-63	10	18
3	July 1961	11	19
4	Revised to 7-1-65	12	20
5		13	21
6		14	22
7		15	23
8		16	24

KEY MAP



**McDOWELL COUNTY**  
STATE OF WEST VIRGINIA  
Office of Assessor

DISTRICT

**BROWNS CREEK**

**SHEET NO: 228**

Date, Aerial Photography: April, 1961 Date, Map: July, 1962  
Photo No: Scale: 1" = 400'