

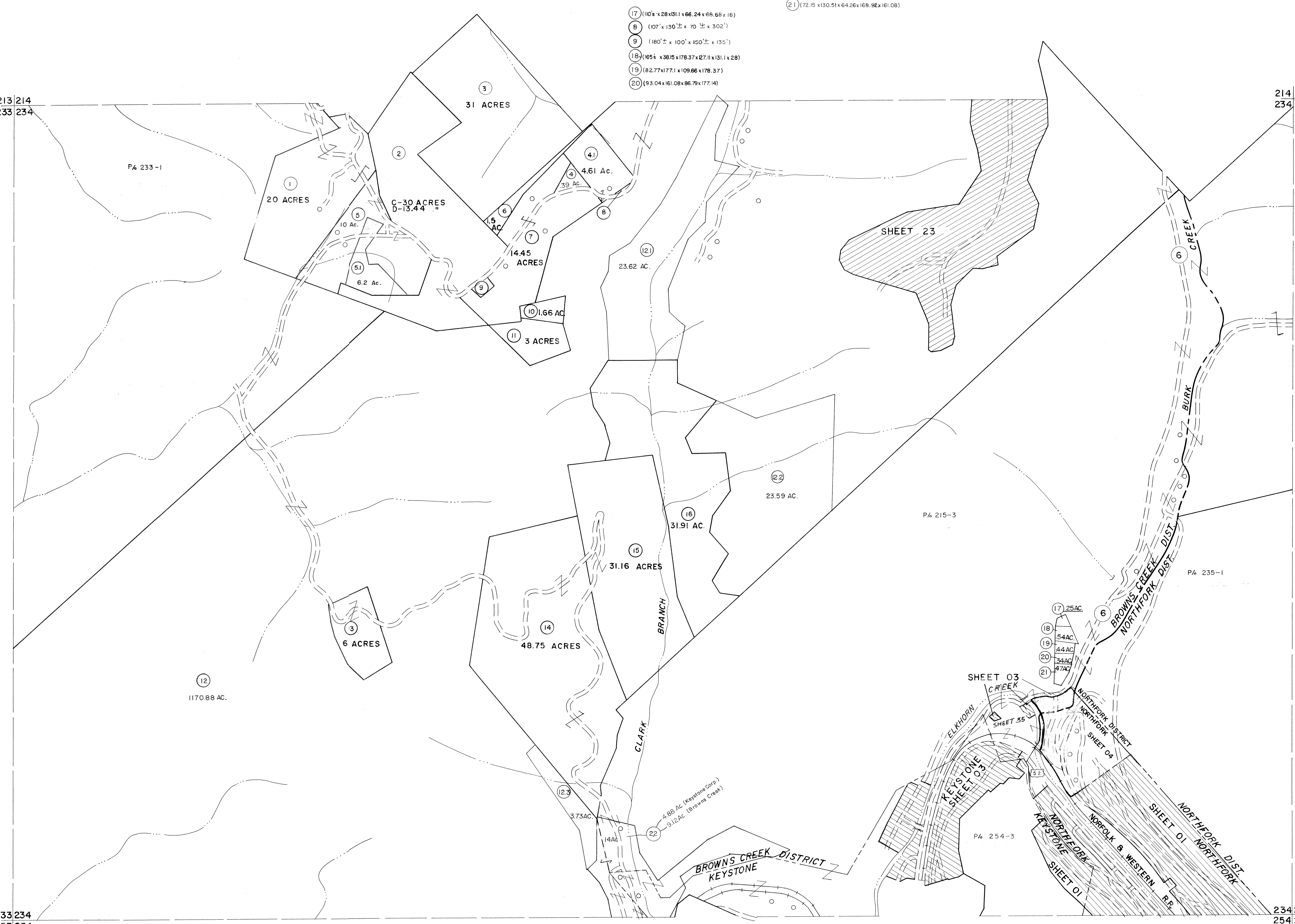
213|214
233|234

214|215
234|235

233|234
253|254

234|235
254|255

- 17 (110' x 28' x 131' x 66.24' x 66.68' x 16)
- 18 (107' x 130' x 70' x 302')
- 19 (180' x 100' x 150' x 135')
- 20 (165' x 38.15' x 178.37' x 27.11' x 131.1' x 28)
- 21 (82.77' x 177.1' x 109.66' x 178.37')
- 22 (93.04' x 161.08' x 86.79' x 177.14')



For Tax Purposes Only
 Prepared by
MICHAEL BAKER, JR., INC.
 Consulting Engineers
 Rochester, Pennsylvania

Legend	
Property line	Original lot line
Edge of pavement or roadway	Deed lot number
Corporation line	Parcel or index number
District line	Improvement
County line	Railroad

Revisions			
1	4-15-64	9	O.G.I.S 12-1-96 J.E.B
2	REVISED JULY 1965 jag	10	ESI 12/4/02 REK
3	12-9-74 T.C.	11	5-15-05 KLS
4	Revised to 7-1-83	12	
5	July 1988	13	
6	Revised to 7-1-88	14	
7	Revised to 7-1-89	15	
8	O.G.I.S 5-15-95 J.E.B	16	

KEY MAP	
214	234
233	235
254	255

McDOWELL COUNTY
 STATE OF WEST VIRGINIA
 Office of Assessor

DISTRICT	
BROWNS CREEK	
SHEET NO: 234	
Date, Aerial Photography: April, 1961	Date, Map: July, 1962
Photo No:	Scale: 1" = 400