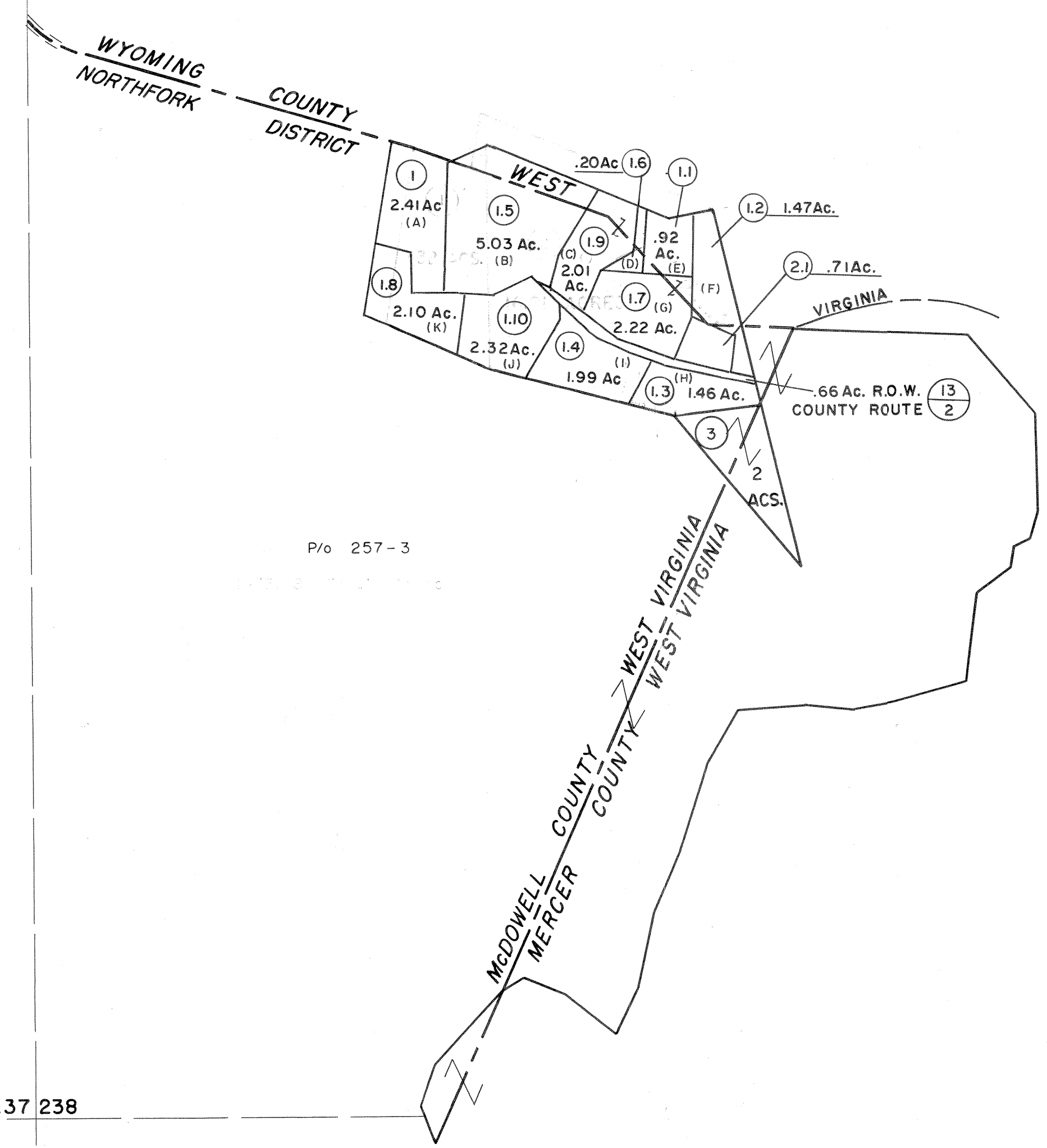


237238



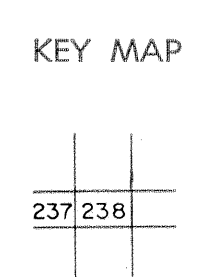
P/O 257-3

237 238

For Tax Purposes Only
 Prepared by
MICHAEL BAKER, JR., INC.
 Consulting Engineers
 Rochester, Pennsylvania

Legend	
Property line	---
Edge of pavement or roadway	— — — —
Corporation line	— · — · —
District line	- - - - -
County line	- - - - -
Original lot line	---
Dead lot number	(15)
Parcel or index number	⊙
Improvement	○
Railroad	— + — + —

Revisions			
1	4-15-64	9	17
2	12-9-74	10	18
3	Revised to 7-1-88	11	19
4	July 1985	12	20
5	8/27/06	13	21
6		14	22
7		15	23
8		16	24



McDOWELL COUNTY
 STATE OF WEST VIRGINIA
 Office of Assessor

DISTRICT	NORTHFORK
SHEET NO:	238
Date, Aerial Photography:	April, 1961
Photo No:	
Date, Map:	July, 1962
Scale:	1" = 400'