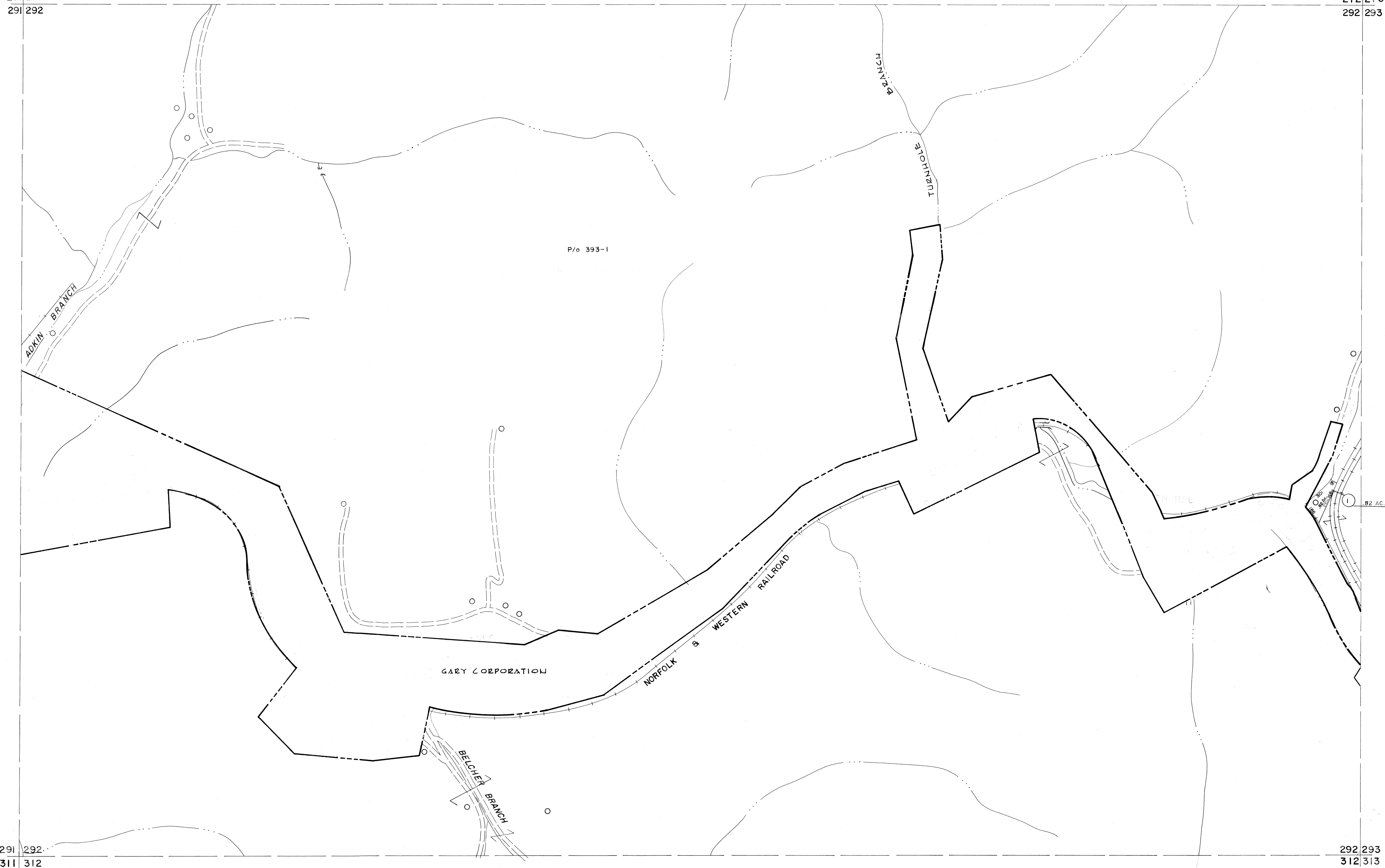


271 272
291 292

272 273
292 293



For Tax Purposes Only

Prepared by
MICHAEL BAKER, JR., INC.
Consulting Engineers
Rochester, Pennsylvania

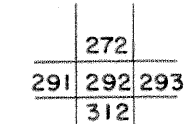
Legend

Property line	—————	Original lot line	-----
Edge of pavement or roadway	-----	Deed lot number	(15)
Corporation line	-----	Parcel or index number	(22)
District line	-----	Improvement	○
County line	-----	Railroad	+

Revisions

1	4-15-64	9	17
2	4-18-72 T.J.M.	10	18
3	7-1-83	11	19
4	<i>7/1/85</i>	12	20
5	6LS INC. 6/26/98 JWM	13	21
6		14	22
7		15	23
8		16	24

KEY MAP



McDOWELL COUNTY
STATE OF WEST VIRGINIA
Office of Assessor

DISTRICT

ADKIN

SHEET NO: 292

Date, Aerial Photography: April, 1961 Date, Map: July, 1962
Photo No: Scale: 1" = 400'