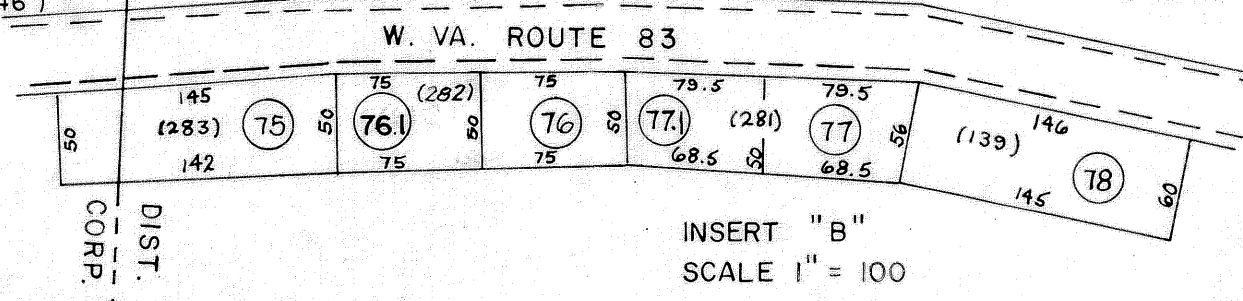


- 3 (540'x25'±x455'±x75'±)
- 6 (275'x125'x250'x125'x25'±)
- 7 (257'x156'x63'x60')
- 8 (70'x90'x98'x45'x64')
- 10 (78'x7'x96'x20')
- 13 (60'x130'x130')
- 15 (100'x200')

- 27 (104.71x190.66x94.2'x190.66')
- 28 (186.5'x107.7'x31.6'x125.3'x149')
- 29 (172.45x56.41x77.2'x82.75'x272.56x67.43')
- 32 (114'x197.57'x108.9'x174')
- 34 (80'x175'x210')
- 35 (50'x50')
- 37 (40'x100')
- 38 (40'x100')
- 39 (50'x100')
- 40 (50'x100')
- 41 (23.5x195x34.5x90'x200'x108')
- 31 (60x34x91x89x114x114)
- 91 (50x938x12388x7719x25949x1228)35 AC
- 92 (65.91x4528x114.25x75.24x101.81) 19 AC.

- 49 (130'x170'x50'x220'x135')
- 55 (175'x135'x180'x110')
- 56 (100'x110'x100'x95')
- 57 (15'x95'x5'x90')
- 58 (146'x90'x146')
- 88 (65x677x20.9) .01 AC.
- 76 (70x20x80x17)
- 76.2 (45x120x70x143)

Insert "A"
Scale 1"=100'



For Tax Purposes Only
Prepared by
MICHAEL BAKER, JR., INC.
Consulting Engineers
Rochester, Pennsylvania

Legend	
Property line	—
Edge of pavement or roadway	—
Corporation line	—
District line	—
County line	—
Original lot line	—
Deed lot number	(15)
Parcel or index number	(99)
Improvement	o
Railroad	—

Revisions	
1	4-15-64
2	12-4-74 DAE
3	4/11/80 VEM
4	Revised to 7-1-83 DJ
5	7-1-84 L.E.S.
6	
7	Revised to 7-1-88 DJ
8	O.G.I.S 5-15-95 J.E.B.
9	SLS INC. 1/4/99 DSW
10	ES1 12/5/02 REK
11	5-15-05 HHS
12	4-18-07 HHS
13	
14	
15	
16	

KEY MAP
285
304305306
325

McDOWELL COUNTY
STATE OF WEST VIRGINIA
Office of Assessor

DISTRICT **SANDY RIVER**
BIG CREEK
SHEET NO: 305
Date, Aerial Photography: April, 1961 Date, Map: July, 1962
Photo No: Scale: 1" = 400'