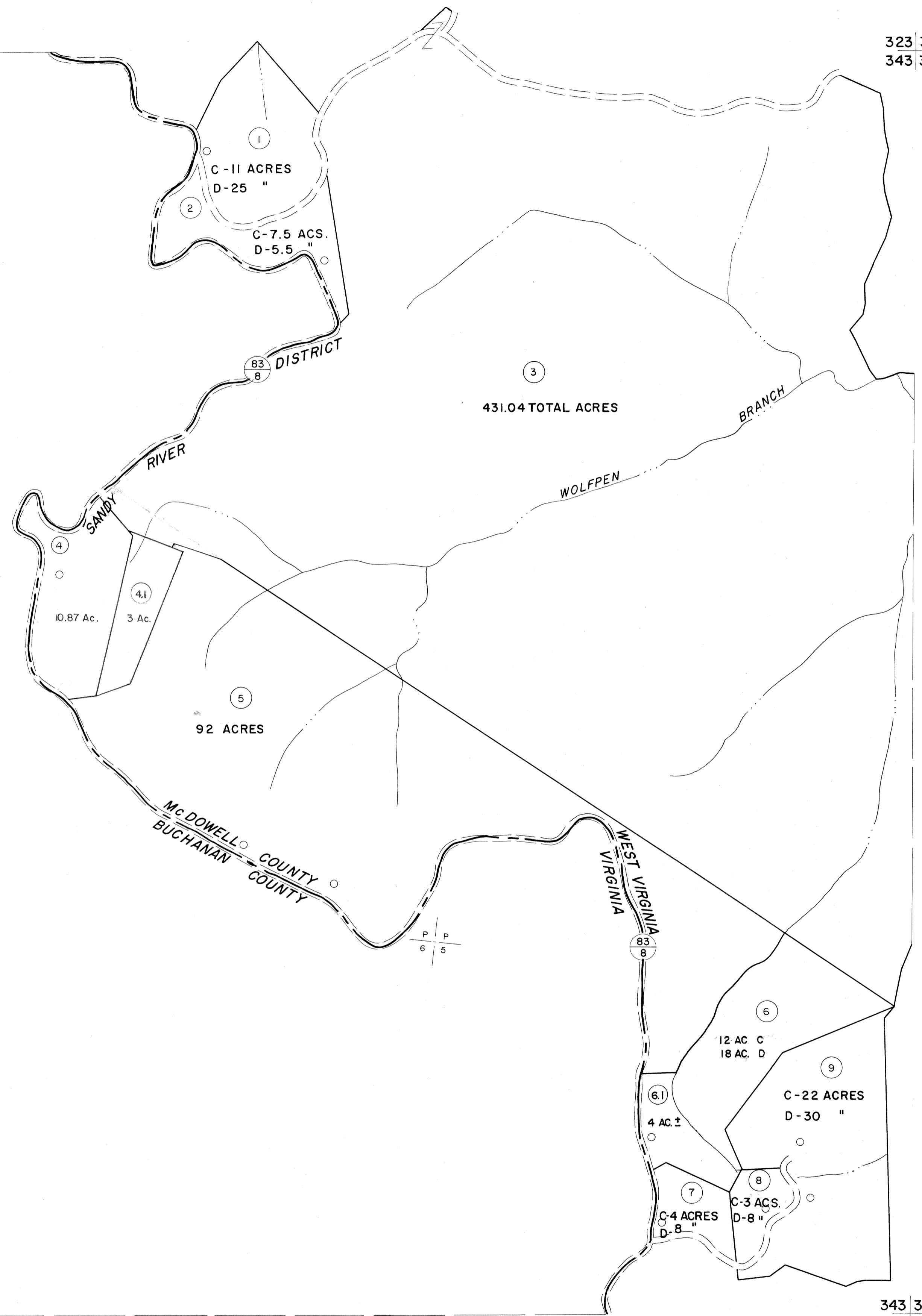


323  
343

323 324  
343 344

343

343 344  
363 364



**For Tax Purposes Only**

Prepared by  
**MICHAEL BAKER, JR., INC.**  
Consulting Engineers  
Rochester, Pennsylvania

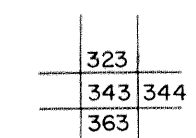
**Legend**

Property line	—————	Original lot line	-----
Edge of pavement or roadway	-----	Deed lot number	(15)
Corporation line	-----	Parcel or index number	(99)
District line	-----	Improvement	o
County line	-----	Railroad	+

**Revisions**

1	4-15-64	9	17
2	Revised to 7-1-65	10	18
3	July 1965	11	19
4	Revised to 7-1-67	12	20
5	ESI 12/5/02 REK	13	21
6		14	22
7		15	23
8		16	24

**KEY MAP**



**McDOWELL COUNTY**  
STATE OF WEST VIRGINIA  
Office of Assessor

**DISTRICT**

**SANDY RIVER**

**SHEET NO: 343**

Date, Aerial Photography: April, 1961 Date, Map: July, 1962  
Photo No: Scale: 1" = 400'