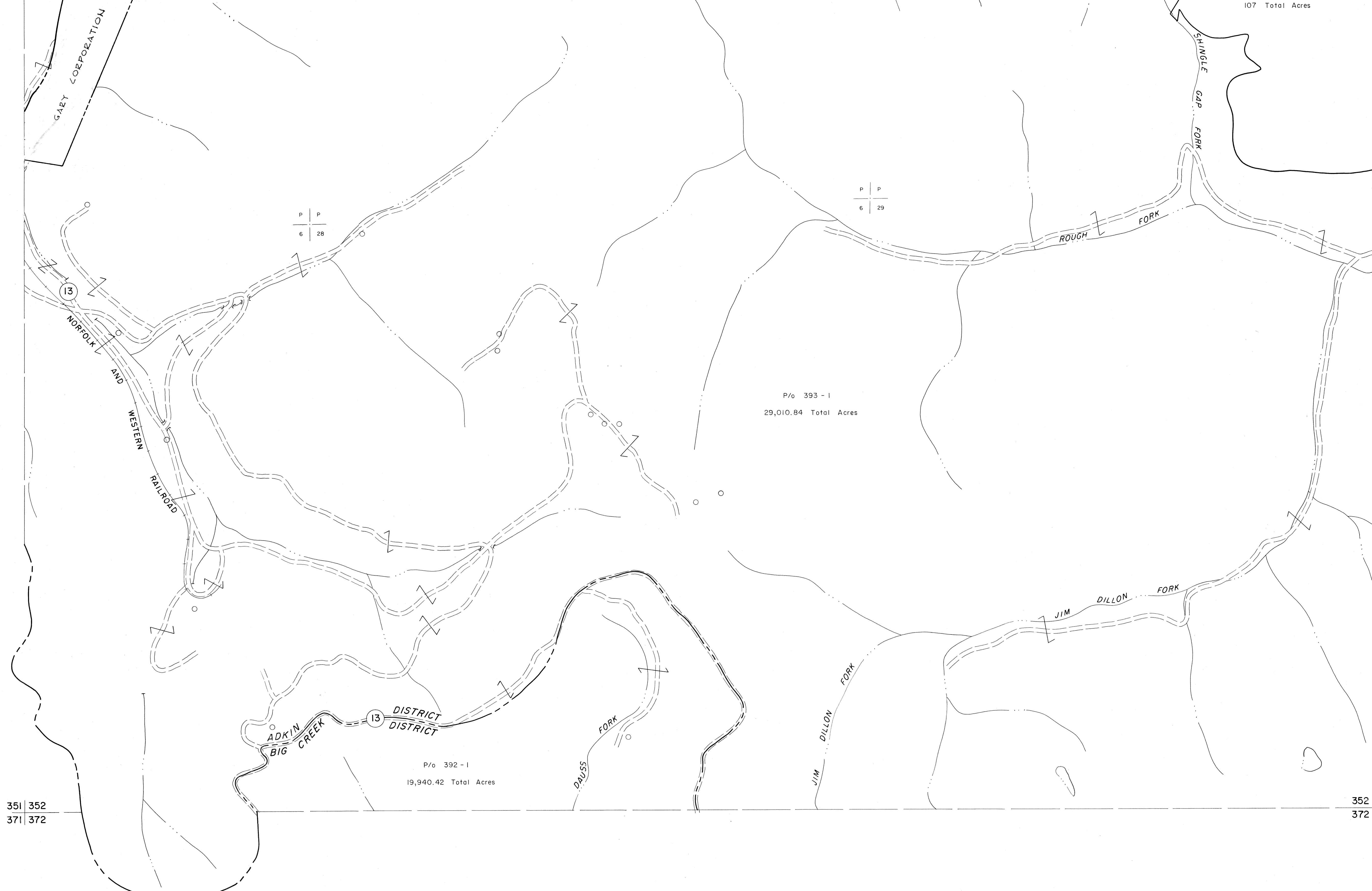


331 332  
351 352

332 333  
352 353

351 352  
371 372

352 353  
372 373

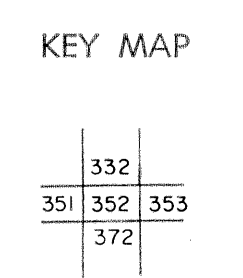


For Tax Purposes Only

Prepared by  
MICHAEL BAKER, JR., INC.  
Consulting Engineers  
Rochester, Pennsylvania

Legend	
Property line	—
Edge of pavement or roadway	- - - -
Corporation line	- · - · -
District line	- - - - -
County line	- · - · -
Original lot line	- · - · -
Deed lot number	(15)
Parcel or index number	(29)
Improvement	○
Railroad	—+—+—+—+—

Revisions			
1	4-15-64	9	17
2	4-19-72 T.J.M.	10	18
3	7/6/75	11	19
4		12	20
5		13	21
6		14	22
7		15	23
8		16	24



**McDOWELL COUNTY**  
STATE OF WEST VIRGINIA  
Office of Assessor

DISTRICT **ADKIN**

**SHEET NO: 352**

Date, Aerial Photography: April, 1961 Date, Map: July, 1962  
Photo No: Scale: 1" = 400'