

373 374
393 394

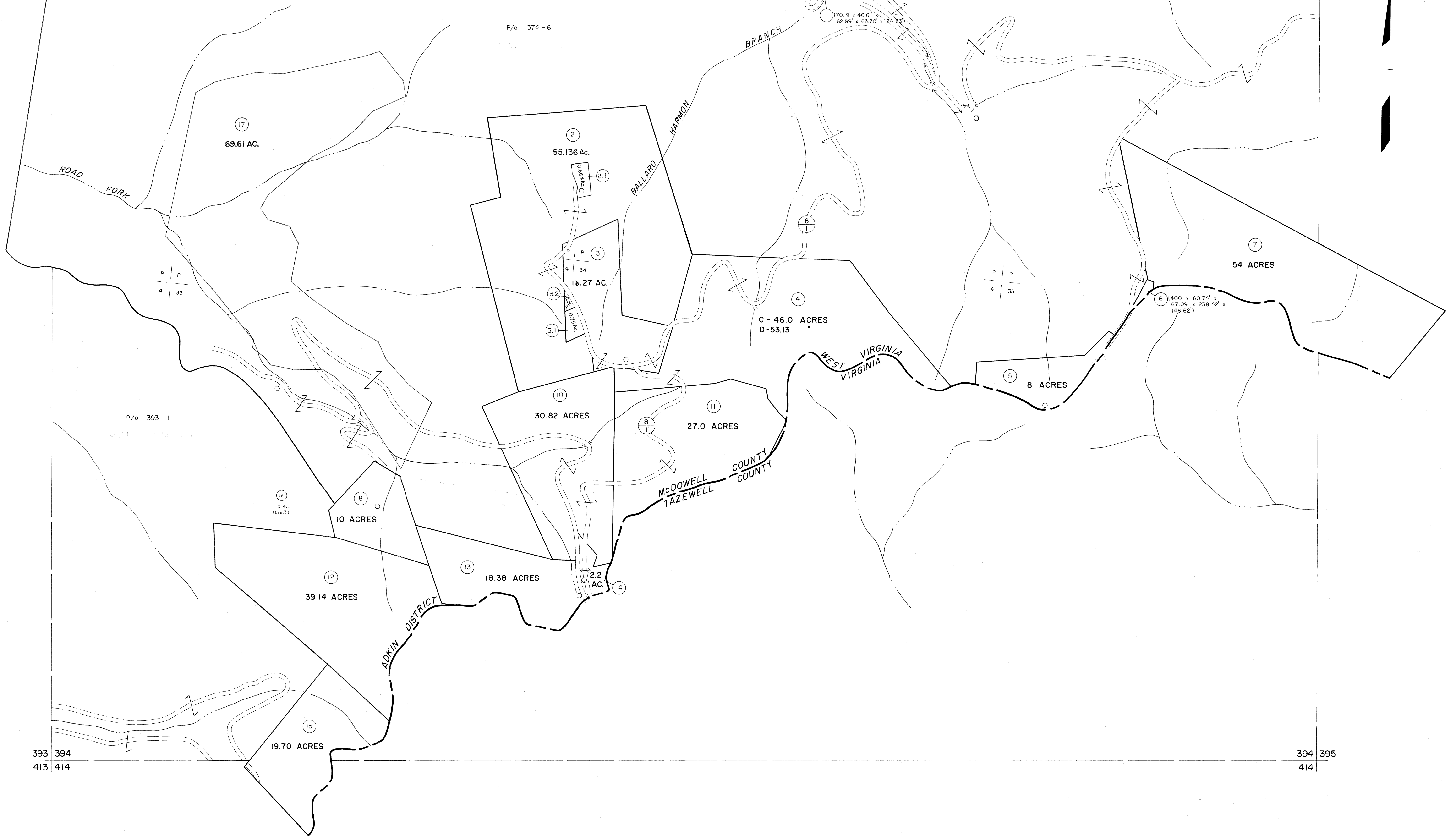
374 375
394 395

P/o 374-6

P/o 393-1

393 394
413 414

394 395
414



For Tax Purposes Only

Prepared by
MICHAEL BAKER, JR., INC.
Consulting Engineers
Rochester, Pennsylvania

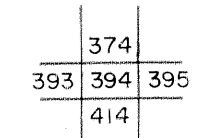
Legend

Property line	—————	Original lot line	-----
Edge of pavement or roadway	-----	Deed lot number	(15)
Corporation line	-----	Parcel or index number	(99)
District line	-----	Improvement	o
County line	-----	Railroad	—+—+—+—

Revisions

1	4-15-64	9	17
2	12-11-74	10	18
3	TO JULY 1983 C.P.	11	19
4	JULY 1985	12	20
5	O.G.I.S 12-1-96 J.E.B.	13	21
6	S.L.S INC. 6/26/98 J.W.M.	14	22
7		15	23
8		16	24

KEY MAP



McDOWELL COUNTY
STATE OF WEST VIRGINIA
Office of Assessor

DISTRICT

ADKIN

SHEET NO: 394

Date, Aerial Photography: April, 1961 Date, Map: July, 1962
Photo No: Scale: 1" = 400'