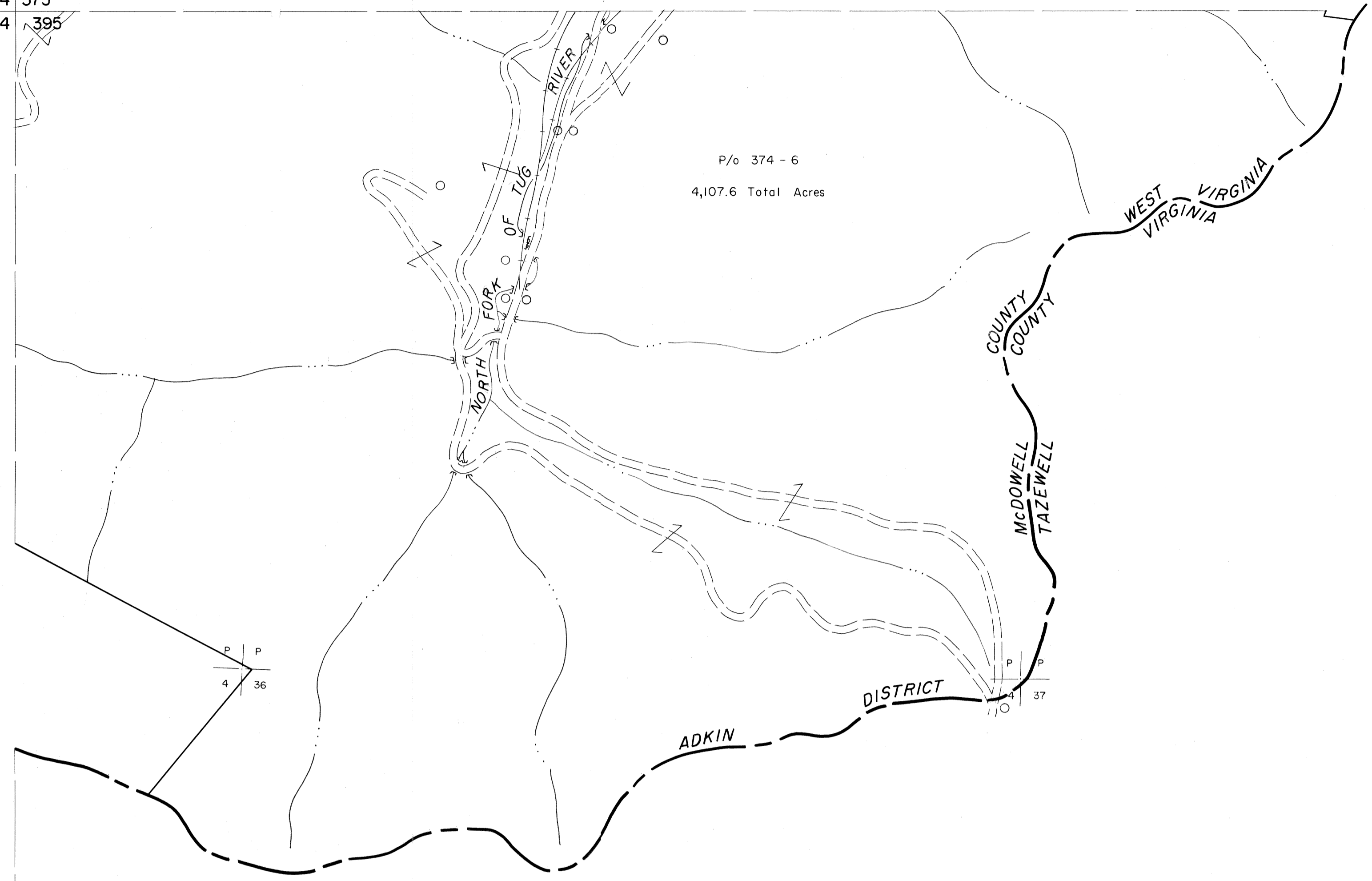


374 375
394 395

375
395



P P
4 36

P P
4 38

394 395
414

395

For Tax Purposes Only

Prepared by
MICHAEL BAKER, JR., INC.
Consulting Engineers
Rochester, Pennsylvania

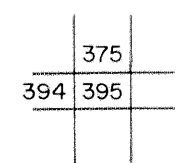
Legend

| | | | |
|-----------------------------|-------|------------------------|---------|
| Property line | ————— | Original lot line | ----- |
| Edge of pavement or roadway | ----- | Deed lot number | (15) |
| Corporation line | ----- | Parcel or index number | (29) |
| District line | ----- | Improvement | o |
| County line | ----- | Railroad | —+—+—+— |

Revisions

| | | | |
|---|----------------------|----|----|
| 1 | 4-15-64 | 9 | 17 |
| 2 | To JULY 1, 1983 C.P. | 10 | 18 |
| 3 | | 11 | 19 |
| 4 | | 12 | 20 |
| 5 | | 13 | 21 |
| 6 | | 14 | 22 |
| 7 | | 15 | 23 |
| 8 | | 16 | 24 |

KEY MAP



MCDOWELL COUNTY
STATE OF WEST VIRGINIA
Office of Assessor

DISTRICT

ADKIN

SHEET NO: 395

Date, Aerial Photography: April, 1961 Date, Map: July, 1962
Photo No: Scale: 1" = 400'