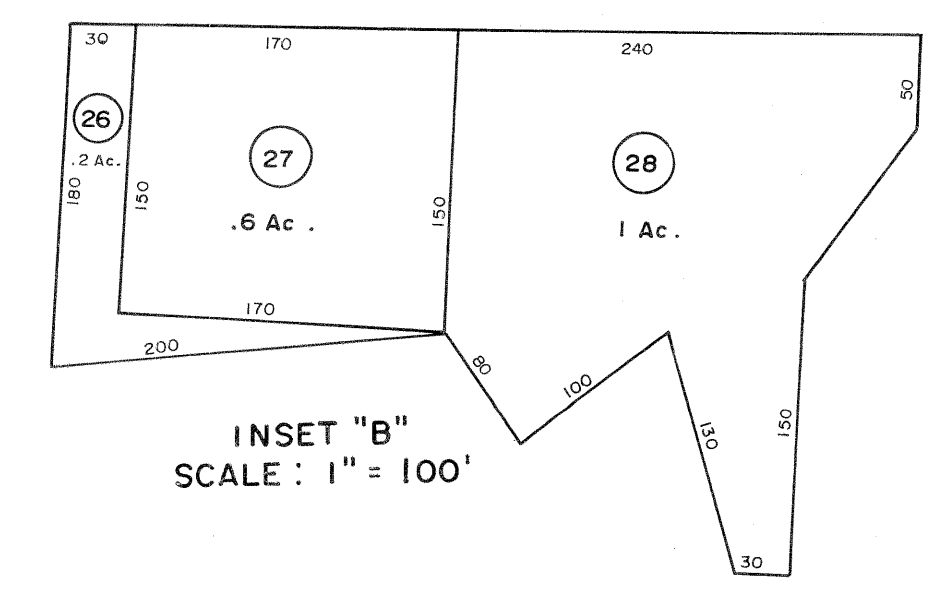
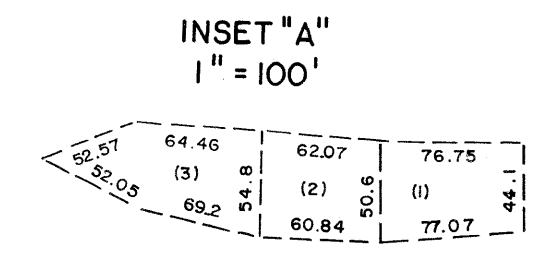
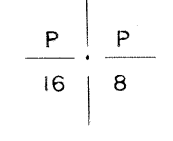
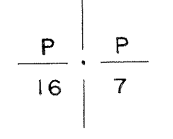
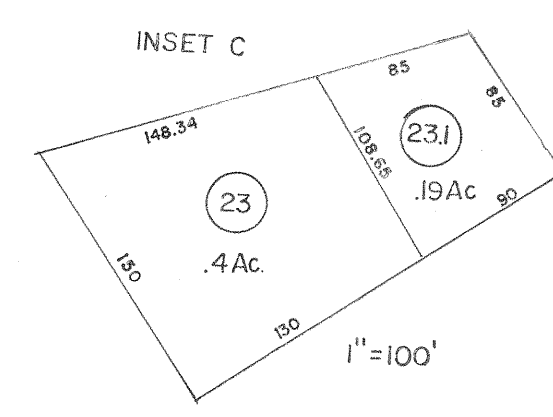


122

103  
122 123



For Tax Purposes Only

Prepared by  
MICHAEL BAKER, JR., INC.  
Consulting Engineers  
Rochester, Pennsylvania

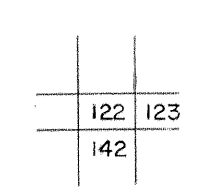
Legend

Property line	-----	Original lot line	-----
Edge of pavement or roadway	-----	Deed lot number	(15)
Corporation line	-----	Parcel or index number	(22)
District line	-----	Improvement	o
County line	-----	Railroad	-----

Revisions

No.	Description	Date	By
1	4-15-64	8/27/06	S&H
2	Revised to 7-1-83		
3	July 88		
4	Revised to 7-1-86		
5	O.G.I.S. 12-1-96		J.E.B.
6	SLS INC. 6/22/98		DSW
7	SLS INC. 12/29/98		DSW
8	5/24/04		S&H

KEY MAP



**McDOWELL COUNTY**  
STATE OF WEST VIRGINIA  
Office of Assessor

DISTRICT  
**SANDY RIVER**

SHEET NO: 122

Date, Aerial Photography: April, 1961 Date, Map: July, 1962  
Photo No: Scale: 1" = 400'

122 123  
142 143