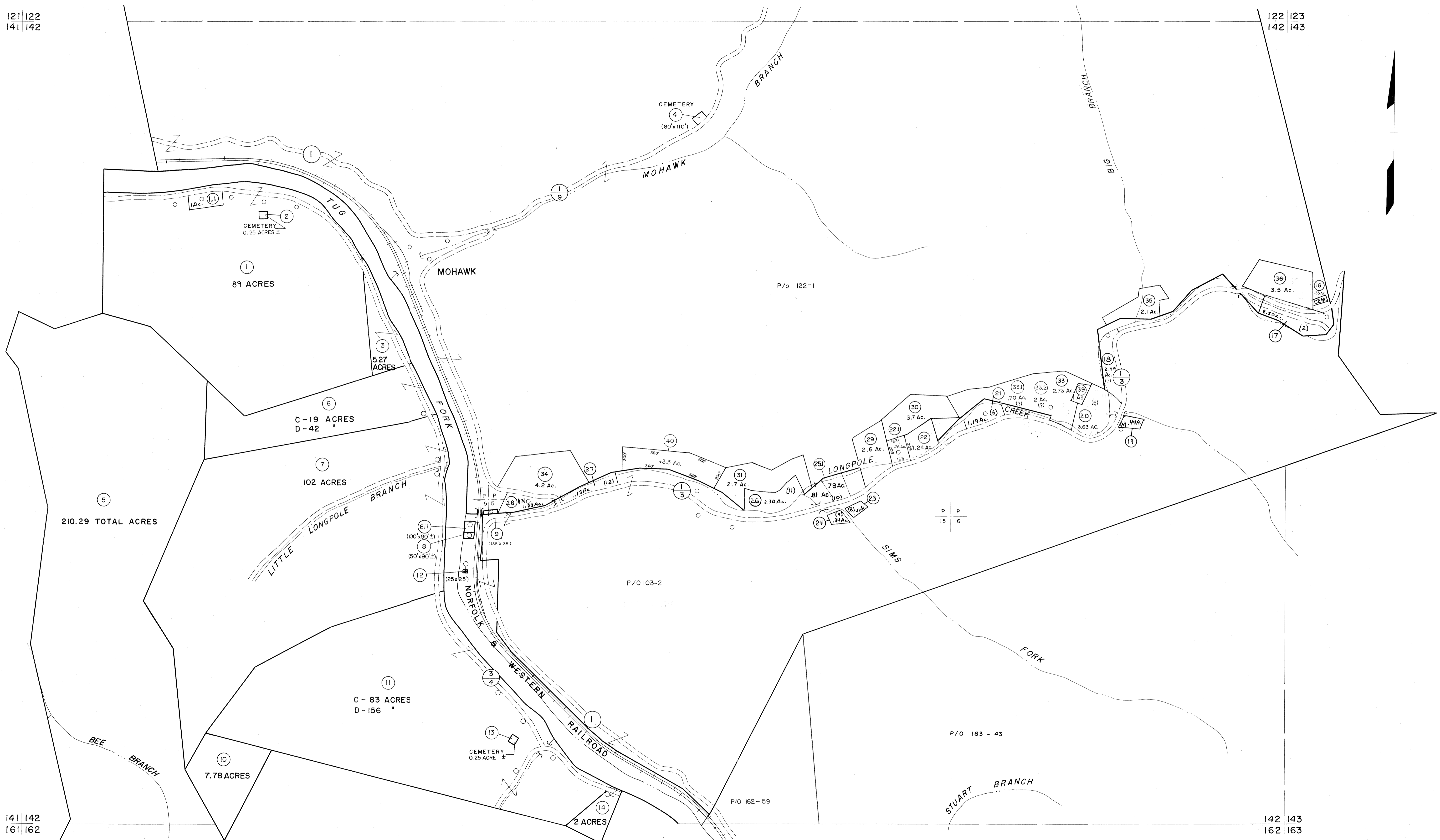


121 | 122
141 | 142

122 | 123
142 | 143

141 | 142
161 | 162

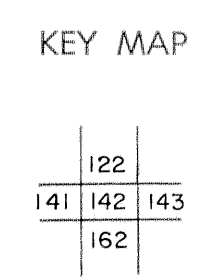
142 | 143
162 | 163



For Tax Purposes Only
 Prepared by
MICHAEL BAKER, JR., INC.
 Consulting Engineers
 Rochester, Pennsylvania

Legend	
Property line	Original lot line
Edge of pavement or roadway	Deed lot number
Corporation line	Parcel or index number
District line	Improvement
County line	Railroad

Revisions			
1	4-15-64	9	SLS INC. 12/29/98 DSW 17
2	12-3-74	10	ESI 12/4/02 REK 18
3	Revised to 7-1-83	11	
4	July 1988	12	
5	O.G.I.S 5-15-95	13	J.E.B 20
6	O.G.I.S 12-1-96	14	J.E.B 21
7	SLS INC. 6/22/99	15	DSW 22
8		16	



McDOWELL COUNTY
 STATE OF WEST VIRGINIA
 Office of Assessor

DISTRICT
SANDY RIVER
 SHEET NO: 142
 Date, Aerial Photography: April, 1961 Date, Map: July 1962
 Photo No: Scale: 1"= 400'