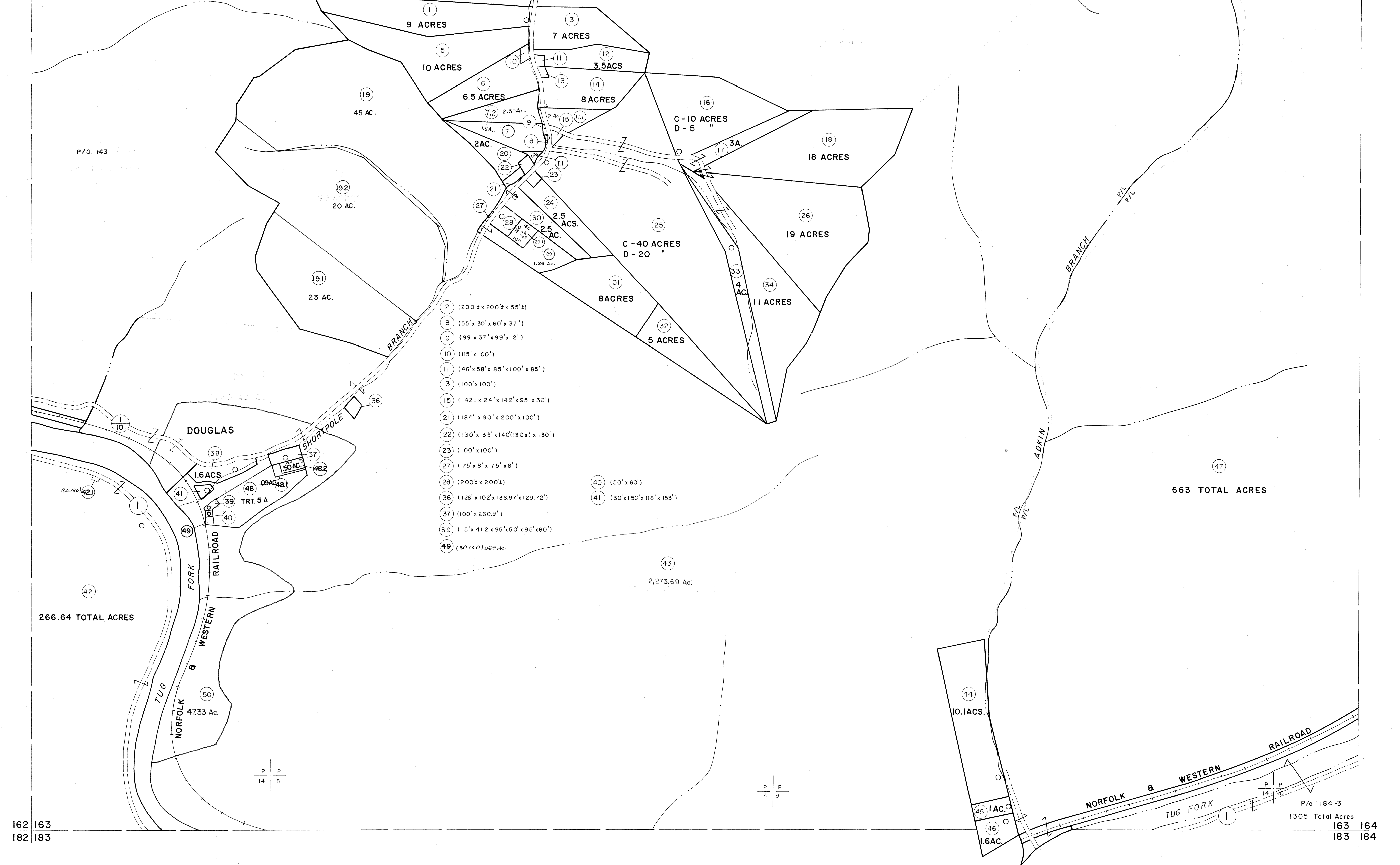


142 143
162 163

143 144
163 164



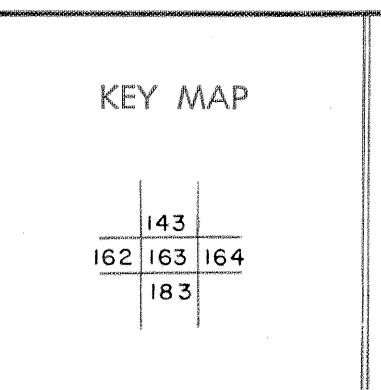
For Tax Purposes Only
Prepared by
MICHAEL BAKER, JR., INC.
Consulting Engineers
Rochester, Pennsylvania

Legend

Property line	—	Original lot line	—
Edge of pavement or roadway	—	Deed lot number	(15)
Corporation line	—	Parcel or index number	(29)
District line	—	Improvement	○
County line	—	Railroad	—

Revisions

1	4-15-64	9		17	
2	12-4-74	10	T.G.	18	
3	Revised to 7-1-63	11		19	
4	July 1961	12		20	
5	O.G.I.S 5-15-95	13	J.E.B	21	
6	ESI 12/4/02	14	REK	22	
7	5/24/04	15	S.B.H	23	
8		16		24	



McDOWELL COUNTY
STATE OF WEST VIRGINIA
Office of Assessor

DISTRICT SANDY RIVER
SHEET NO: 163
Date, Aerial Photography: April, 1961 Date, Map: July, 1962
Photo No: Scale: 1" = 400'