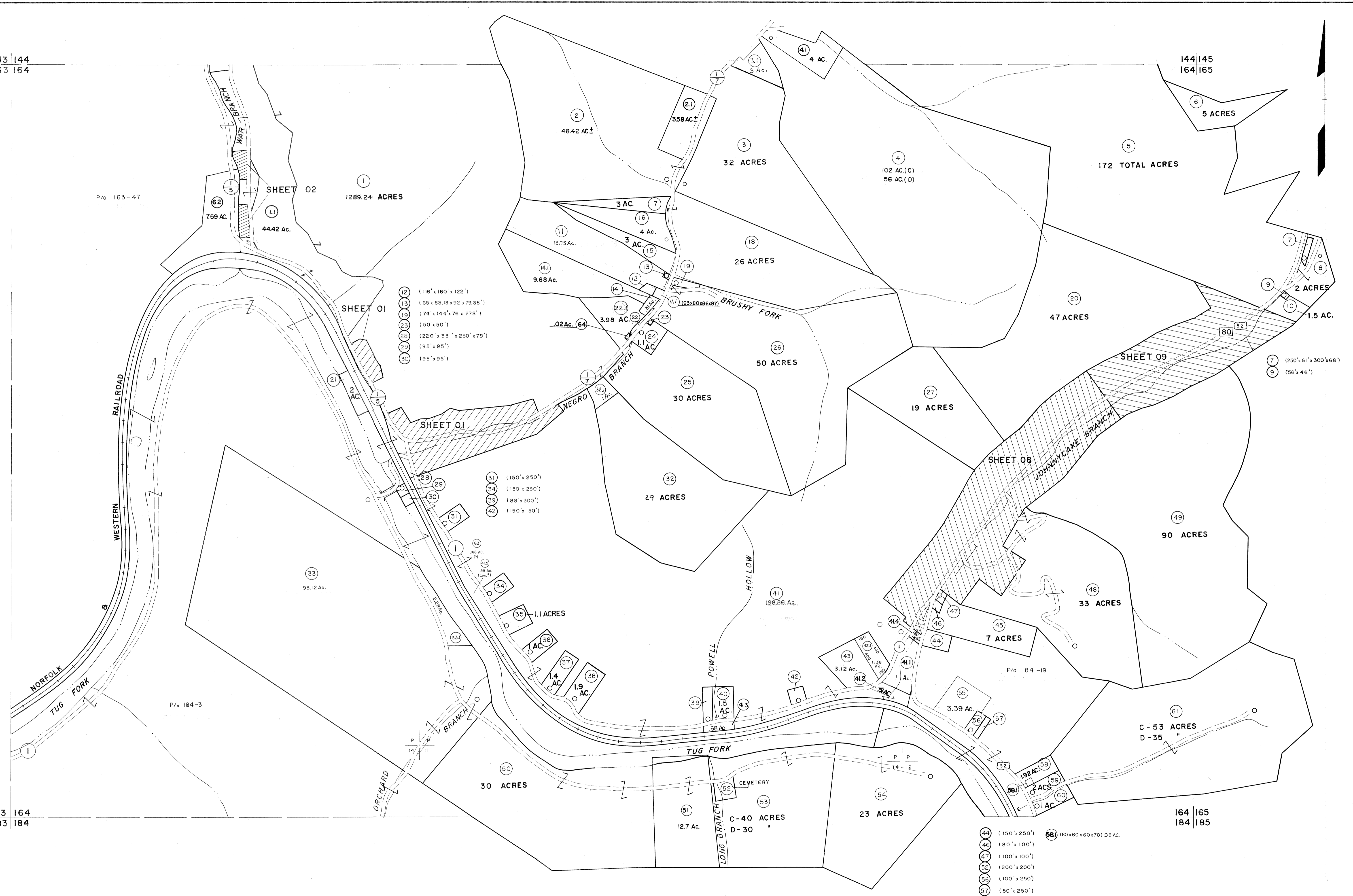


143 | 144
163 | 164

144 | 145
164 | 165

163 | 164
183 | 184

164 | 165
184 | 185



For Tax Purposes Only

Prepared by
MICHAEL BAKER, JR., INC.
Consulting Engineers
Rochester, Pennsylvania

Legend	
Property line	—
Edge of pavement or roadway	—
Corporation line	—
District line	—
County line	—
Original lot line	—
Deed lot number	(15)
Parcel or index number	(22)
Improvement	o
Railroad	—

Revisions						
1	4-15-64	9	O.G.I.S	12-1-96	J.E.B	17
2	12-4-74	10	SLS INC.	6/22/98	DSW	18
3	7-1-83	11	SLS INC.	12/29/98	DSW	19
4	7-1-84	12	ESI	4/24/01	REK	20
5	July 1988	13	5/24/04		SBH	21
6	Revised to 7-1-88	14	5-15-05	H+S		22
7	Revised to 7-1-89	15	SBH	12/31/05		23
8	O.G.I.S	16	5-15-95	J.E.B		24

KEY MAP

McDOWELL COUNTY
STATE OF WEST VIRGINIA
Office of Assessor

DISTRICT
SANDY RIVER

SHEET NO: 164

Date, Aerial Photography: April, 1961 Date, Map: July, 1962
Photo No: Scale: 1" = 400'