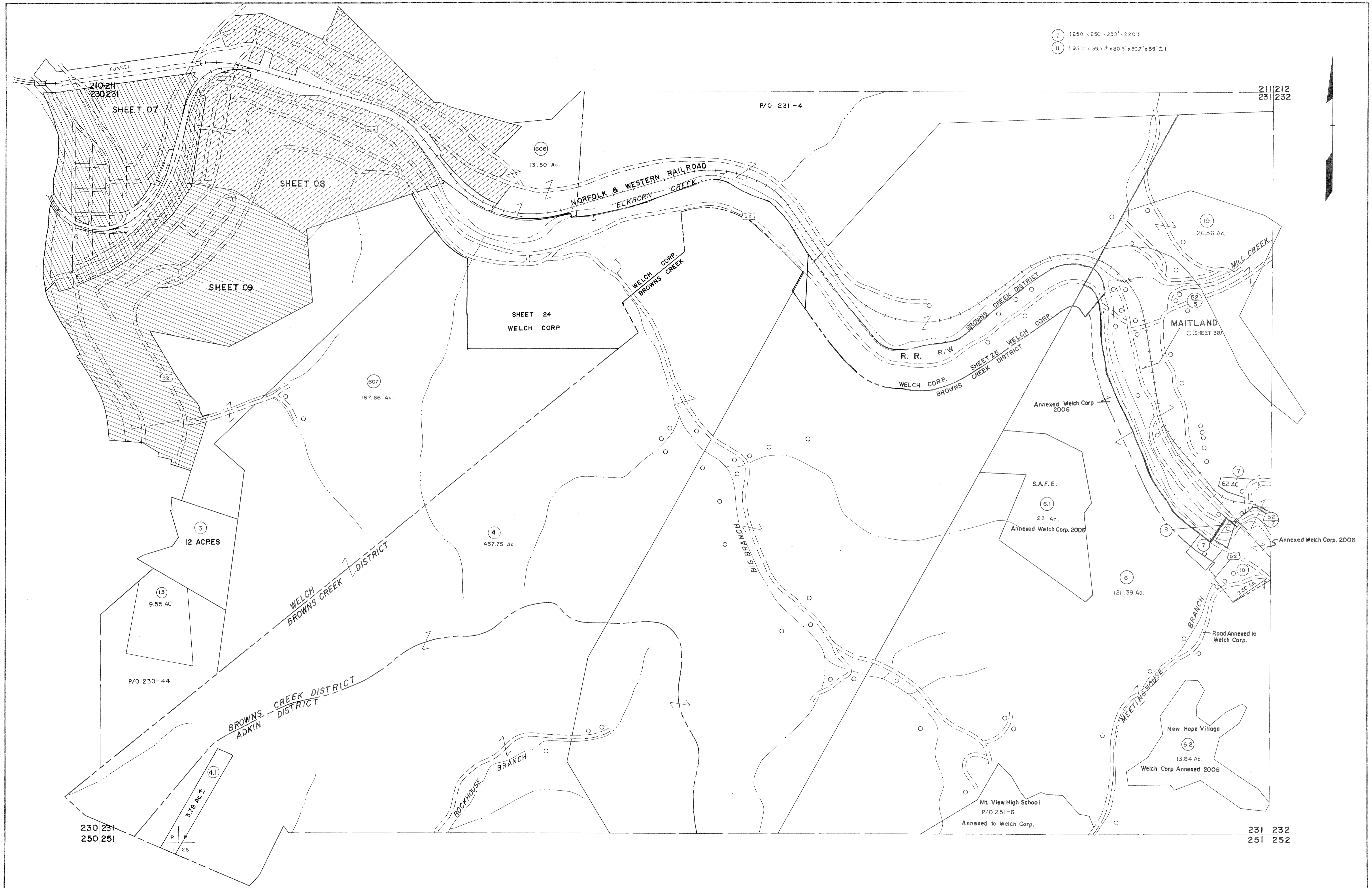


7 (250' x 250' x 250' x 220')
 8 (95' ± x 39.5' ± x 60.6' x 50.7' x 55' ±)



For Tax Purposes Only
 Prepared by
MICHAEL BAKER, JR., INC.
 Consulting Engineers
 Rochester, Pennsylvania

Legend	
Property line	—
Edge of pavement or roadway	—
Corporation line	—
District line	—
County line	—
Original lot line	—
Deed lot number	(15)
Parcel or index number	(29)
Improvement	○
Railroad	—

Revisions			
1	4-15-64	9	5/23/04 SBH 17
2	Revised to 7-1-89	10	6-18-07 H+H 18
3	July 1985	11	
4	Revised to 7-1-89	12	
5	Revised to 1-1-89	13	
6	O.G.I.S. 5-15-95 J.E.B	14	
7	O.G.I.S. 12-1-96 J.E.B	15	
8	SLS INC. 12/30/98 DSW	16	

KEY MAP

MCDOWELL COUNTY
 STATE OF WEST VIRGINIA
 Office of Assessor

DISTRICT **BROWNS CREEK WELCH**
SHEET NO: 231
 Date, Aerial Photography: April, 1961 Date, Map: July, 1962
 Photo No: Scale: 1" = 400'