

213|214  
233|234

214|215  
234|235

P/ 233-1

P/ 233-1

SHEET 23

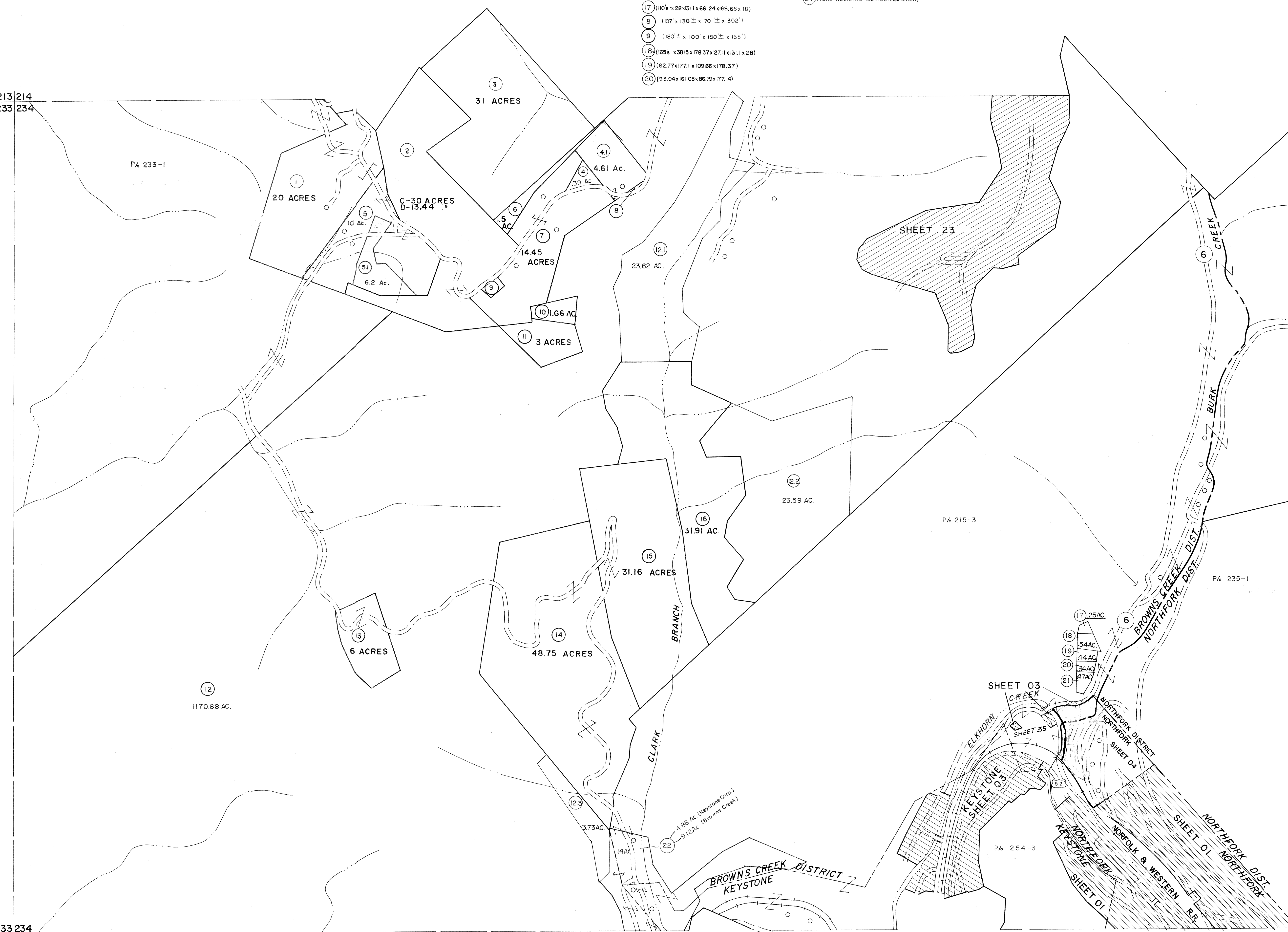
P/ 215-3

P/ 235-1

233|234  
253|254

234|235  
254|255

- 17 (110' x 28' x 131' x 66.24' x 66.68' x 16)
- 18 (107' x 130' x 70' x 302')
- 19 (180' x 100' x 150' x 135')
- 20 (165' x 38.15' x 178.37' x 27.11' x 131.1' x 28)
- 21 (82.77' x 177.1' x 109.66' x 178.37')
- 22 (93.04' x 161.08' x 86.79' x 177.14')



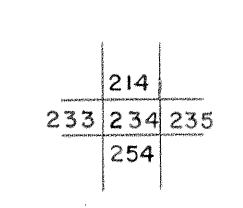
Legend

Property line	—	Original lot line	—
Edge of pavement or roadway	—	Deed lot number	(15)
Corporation line	—	Parcel or index number	(22)
District line	—	Improvement	o
County line	—	Railroad	—

Revisions

1	4-15-64	9	O.G.I.S	12-1-96	J.E.B	17
2	REVISED JULY 1965 jag	10	ESI	12/4/02	REK	18
3	12-9-74 T.C.	11		5-15-05	KLAS	19
4	Revised to 7-1-83	12				20
5	July 1988	13				21
6	Revised to 7-1-88	14				22
7	Revised to 7-1-89	15				23
8	O.G.I.S 5-15-95	16				24

KEY MAP



**McDOWELL COUNTY**  
 STATE OF WEST VIRGINIA  
 Office of Assessor

DISTRICT  
**BROWNS CREEK**  
 SHEET NO: 234  
 Date, Aerial Photography: April, 1961 Date, Map: July, 1962  
 Photo No: Scale: 1" = 400

For Tax Purposes Only  
 Prepared by  
**MICHAEL BAKER, JR., INC.**  
 Consulting Engineers  
 Rochester, Pennsylvania