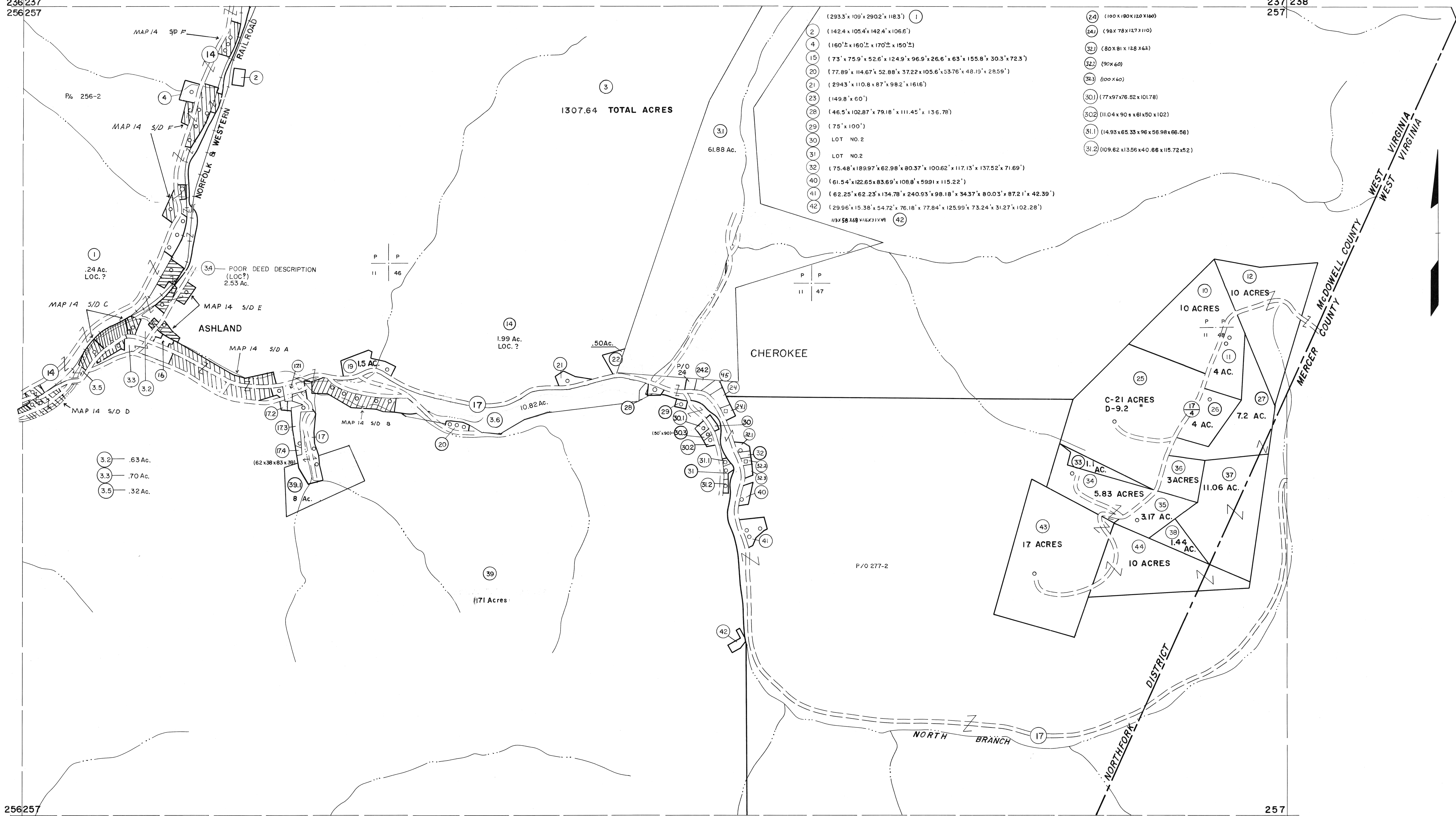


236|237
256|257

237|238
257|258



256|257
276|277

257|258
277|278

For Tax Purposes Only

Prepared by
MICHAEL BAKER, JR., INC.
Consulting Engineers
Rochester, Pennsylvania

Legend	
Property line	Original lot line
Edge of pavement or roadway	Deed lot number
Corporation line	Parcel or index number
District line	Improvement
County line	Railroad

Revisions			
1	4-15-64	9	S&H 12/31/05
2	12-10-74	10	3/28/08
3	7-26-15	11	3/3/14
4	Revised to 7-1-83	12	2/27/17
5	July 14, 05	13	
6	Revised to 7-1-88	14	
7	SLS INC. 12/30/98	15	
8	5-15-05	16	

KEY MAP	
237	257
256	257
277	

McDOWELL COUNTY
STATE OF WEST VIRGINIA
Office of Assessor

DISTRICT **NORTHFORK**

SHEET NO: 257

Date, Aerial Photography: April, 1961 Date, Map: July, 1962
Photo No: Scale: 1" = 400'