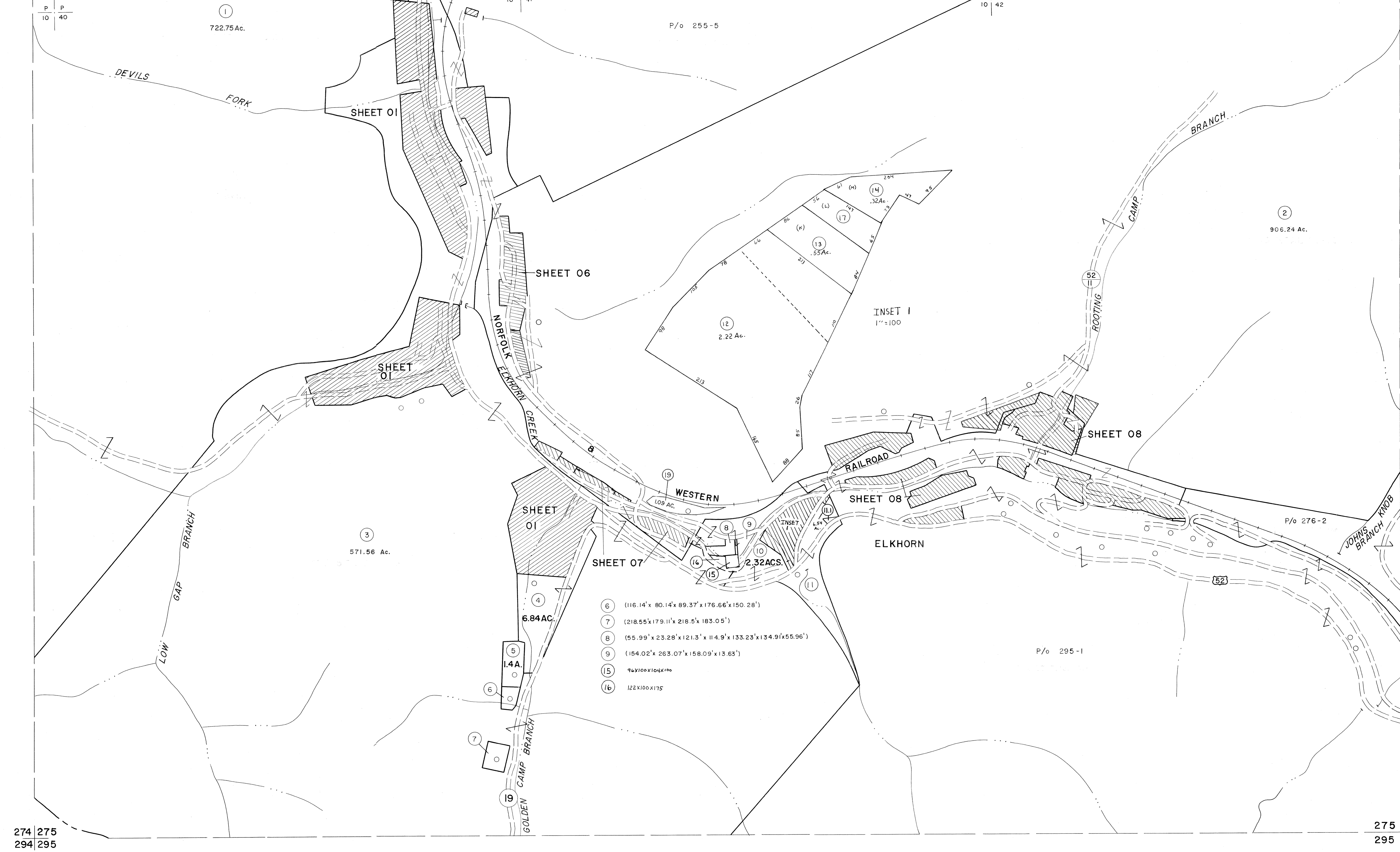
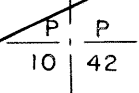
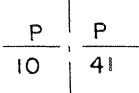
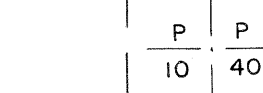


254 255  
274 275

255 256  
275 276

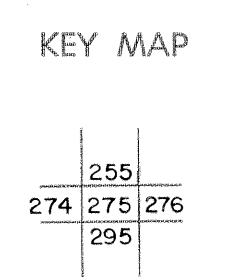


- 6 (116.14' x 80.14' x 89.37' x 176.66' x 150.28')
- 7 (218.55' x 179.11' x 218.5' x 183.05')
- 8 (55.99' x 23.28' x 121.3' x 114.9' x 133.23' x 134.9' x 55.96')
- 9 (154.02' x 263.07' x 158.09' x 13.63')
- 15 96x100x104x106
- 16 122x100x175

For Tax Purposes Only  
 Prepared by  
**MICHAEL BAKER, JR., INC.**  
 Consulting Engineers  
 Rochester, Pennsylvania

Legend	
Property line	—
Edge of pavement or roadway	—
Corporation line	—
District line	—
County line	—
Original lot line	—
Dead lot number	(15)
Parcel or index number	(99)
Improvement	o
Railroad	—

Revisions			
1	4-15-64	9	ESI 12/4/02 REK 17
2	12-10-74	7: G	5/23/04 SBH 18
3	REV. TO 7-1-83	NCS	8/27/06 SBH 19
4	July 1925	722	
5	O.G.I.S 5-15-95	J.E.B	
6	O.G.I.S 12-1-96	J.E.B	
7	BLS INC. 6/26/98	JWM	
8			



**McDOWELL COUNTY**  
 STATE OF WEST VIRGINIA  
 Office of Assessor

DISTRICT	<b>ELKHORN</b>
SHEET NO:	<b>275</b>
Date, Aerial Photography:	April, 1961
Photo No:	
Date, Map:	July, 1962
Scale:	1" = 400'