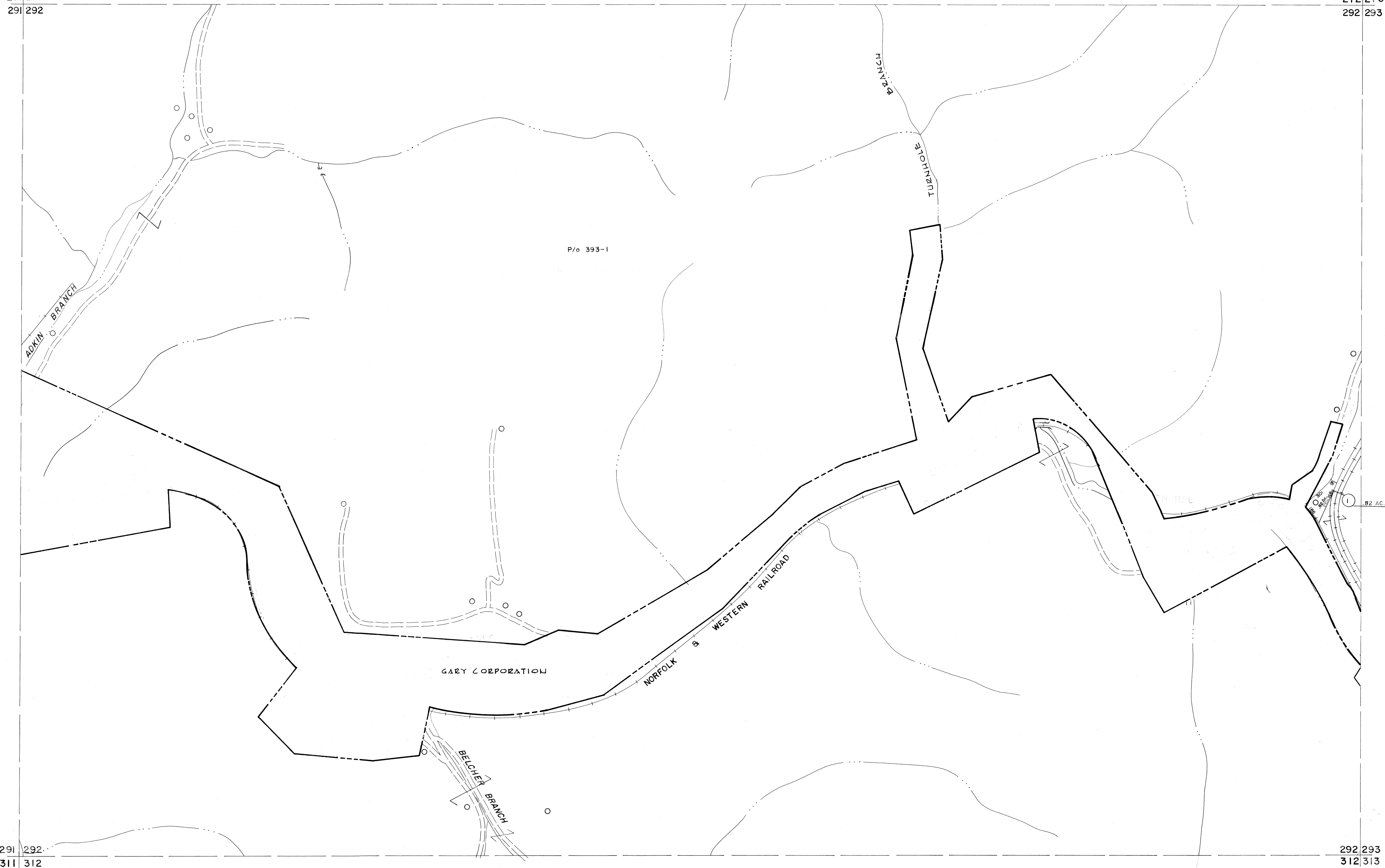


271 272
291 292

272 273
292 293



For Tax Purposes Only

Prepared by
MICHAEL BAKER, JR., INC.
Consulting Engineers
Rochester, Pennsylvania

Legend

| | | | |
|-----------------------------|-------|------------------------|-------|
| Property line | ————— | Original lot line | ----- |
| Edge of pavement or roadway | ----- | Deed lot number | (15) |
| Corporation line | ----- | Parcel or index number | (22) |
| District line | ----- | Improvement | ○ |
| County line | ----- | Railroad | + |

Revisions

| | | | |
|---|----------------------|----|----|
| 1 | 4-15-64 | 9 | 17 |
| 2 | 4-18-72 T.J.M. | 10 | 18 |
| 3 | 7-1-83 | 11 | 19 |
| 4 | <i>7/1/85</i> | 12 | 20 |
| 5 | 6LS INC. 6/26/98 JWM | 13 | 21 |
| 6 | | 14 | 22 |
| 7 | | 15 | 23 |
| 8 | | 16 | 24 |

KEY MAP



McDOWELL COUNTY
STATE OF WEST VIRGINIA
Office of Assessor

DISTRICT

ADKIN

SHEET NO: 292

Date, Aerial Photography: April, 1961 Date, Map: July, 1962
Photo No: Scale: 1" = 400'