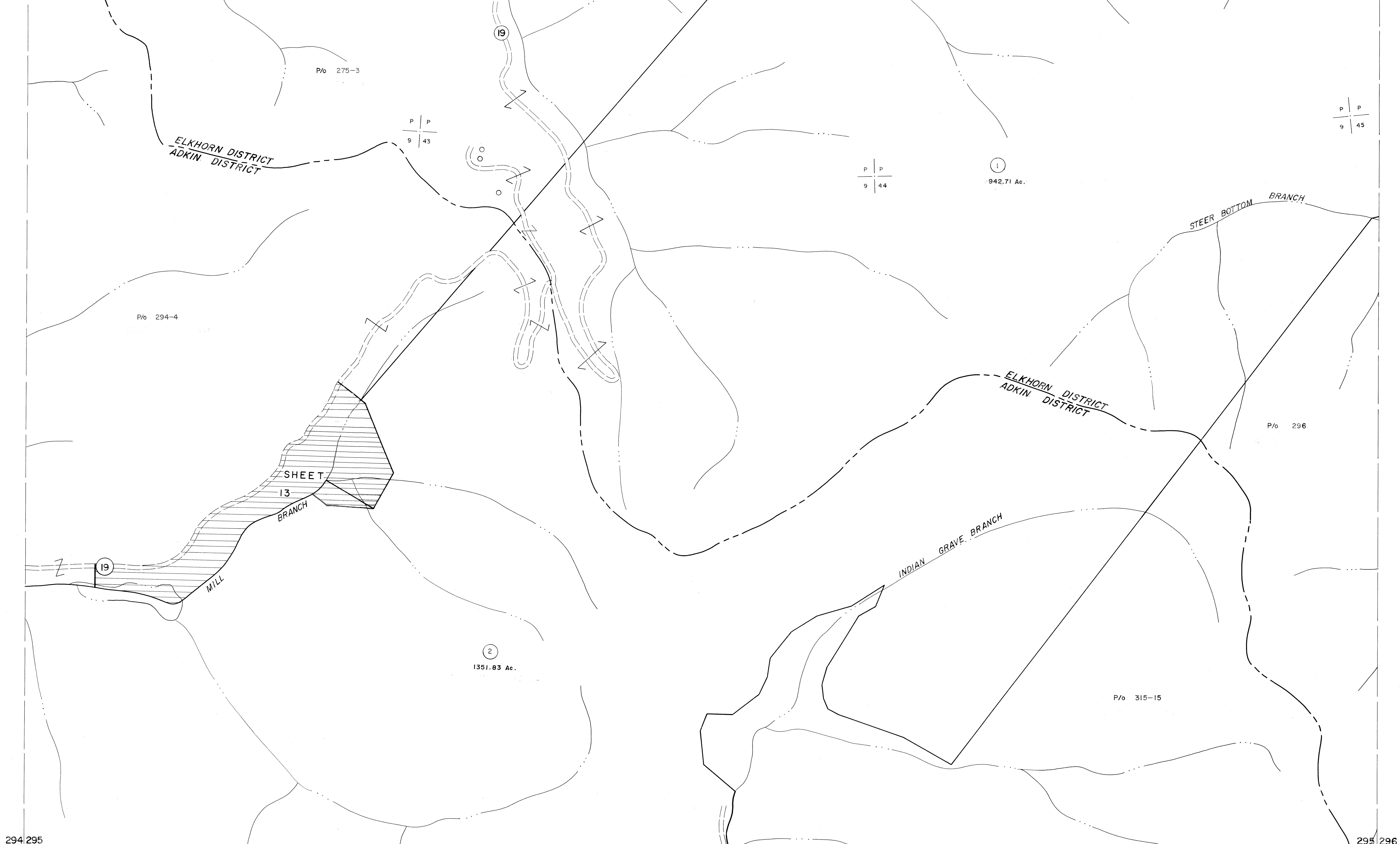


274 275  
294 295

275 276  
295 296



294 295  
314 315

295 296  
315 316

For Tax Purposes Only

Prepared by  
MICHAEL BAKER, JR., INC.  
Consulting Engineers  
Rochester, Pennsylvania

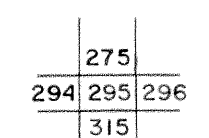
Legend

|                             |               |                        |           |
|-----------------------------|---------------|------------------------|-----------|
| Property line               | —             | Original lot line      | - - - - - |
| Edge of pavement or roadway | — · — · —     | Deed lot number        | (15)      |
| Corporation line            | — · — · — · — | Parcel or index number | (99)      |
| District line               | - - - - -     | Improvement            | ○         |
| County line                 | - - - - -     | Railroad               | — + — + — |

Revisions

|   |                        |    |    |
|---|------------------------|----|----|
| 1 | 4-15-64                | 9  | 17 |
| 2 | 7-1-63                 | 10 | 18 |
| 3 | 7-1-63                 | 11 | 19 |
| 4 | 6.6.1.S 5-15-95 J.E.B  | 12 | 20 |
| 5 | SLS INC. 6/26/98 J.W.M | 13 | 21 |
| 6 |                        | 14 | 22 |
| 7 |                        | 15 | 23 |
| 8 |                        | 16 | 24 |

KEY MAP



McDOWELL COUNTY  
STATE OF WEST VIRGINIA  
Office of Assessor

DISTRICT  
**ADKIN  
ELKHORN**

SHEET NO: 295

Date, Aerial Photography: April, 1961 Date, Map: July, 1962  
Photo No: Scale: 1" = 400'