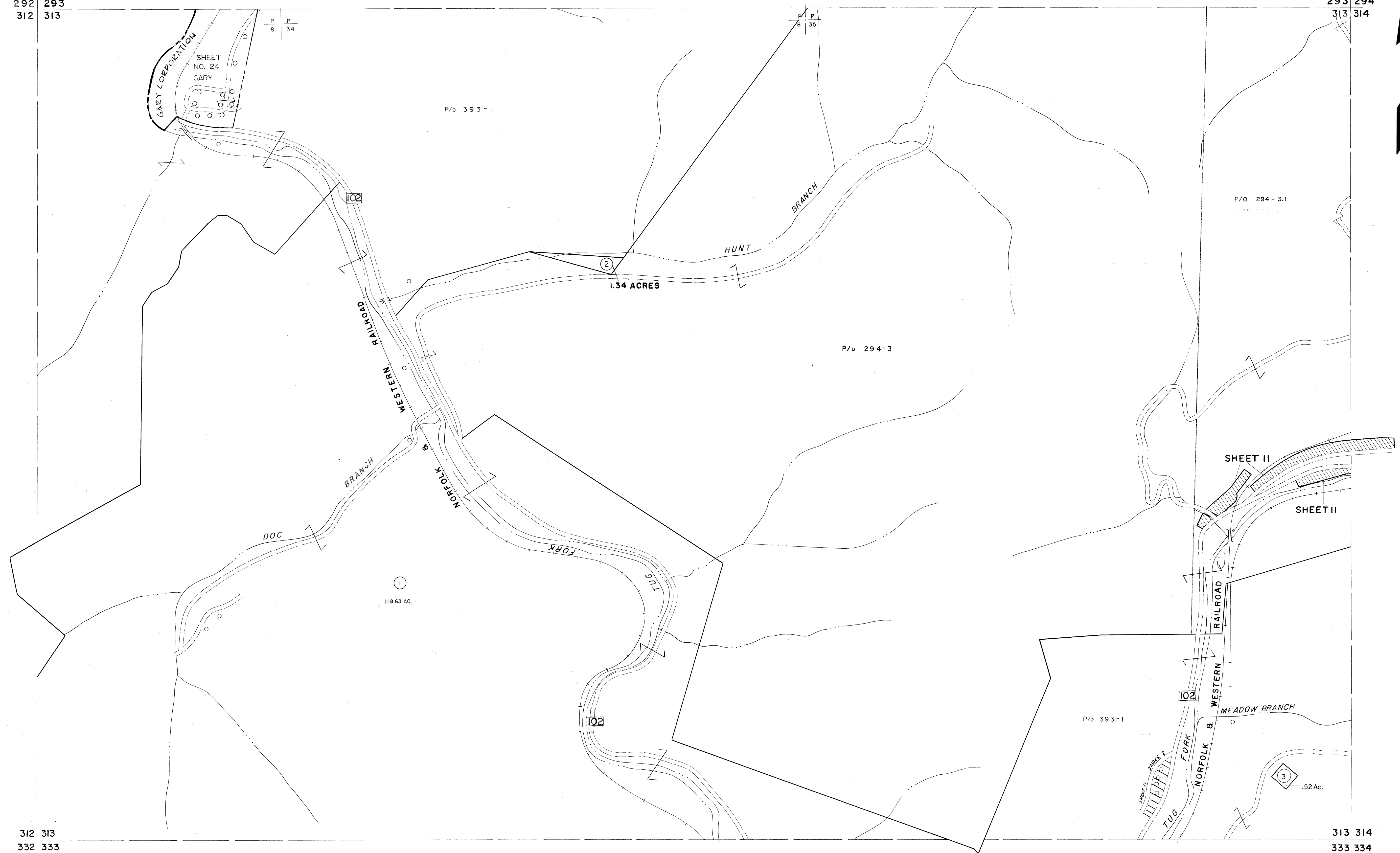


292 293
312 313

293 294
313 314



312 313
332 333

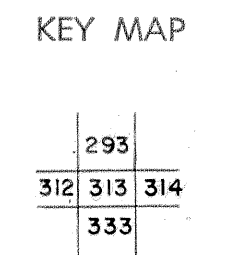
313 314
333 334

For Tax Purposes Only

Prepared by
MICHAEL BAKER, JR., INC.
Consulting Engineers
Rochester, Pennsylvania

Legend	
Property line	—
Edge of pavement or roadway	- - - -
Corporation line	- · - · -
District line	- - - - -
County line	- - - - -
Original lot line	- - - - -
Deed lot number	(15)
Parcel or index number	(29)
Improvement	o
Railroad	+

Revisions	
1	4-15-64
2	4-19-72 J.M.
3	12-5-74 DAE
4	7-1-83 L.E.S.
5	12-1-85 J.E.B.
6	Q.G.I.S. 5-15-95 J.E.B.
7	Q.G.I.S. 12-1-96 J.E.B.
8	SLS INC. 6/26/98 J.W.M.



McDOWELL COUNTY
STATE OF WEST VIRGINIA
Office of Assessor

DISTRICT	ADKIN
SHEET NO:	313
Date, Aerial Photography:	April, 1961
Photo No:	
Date, Map:	July, 1962
Scale:	1" = 400'