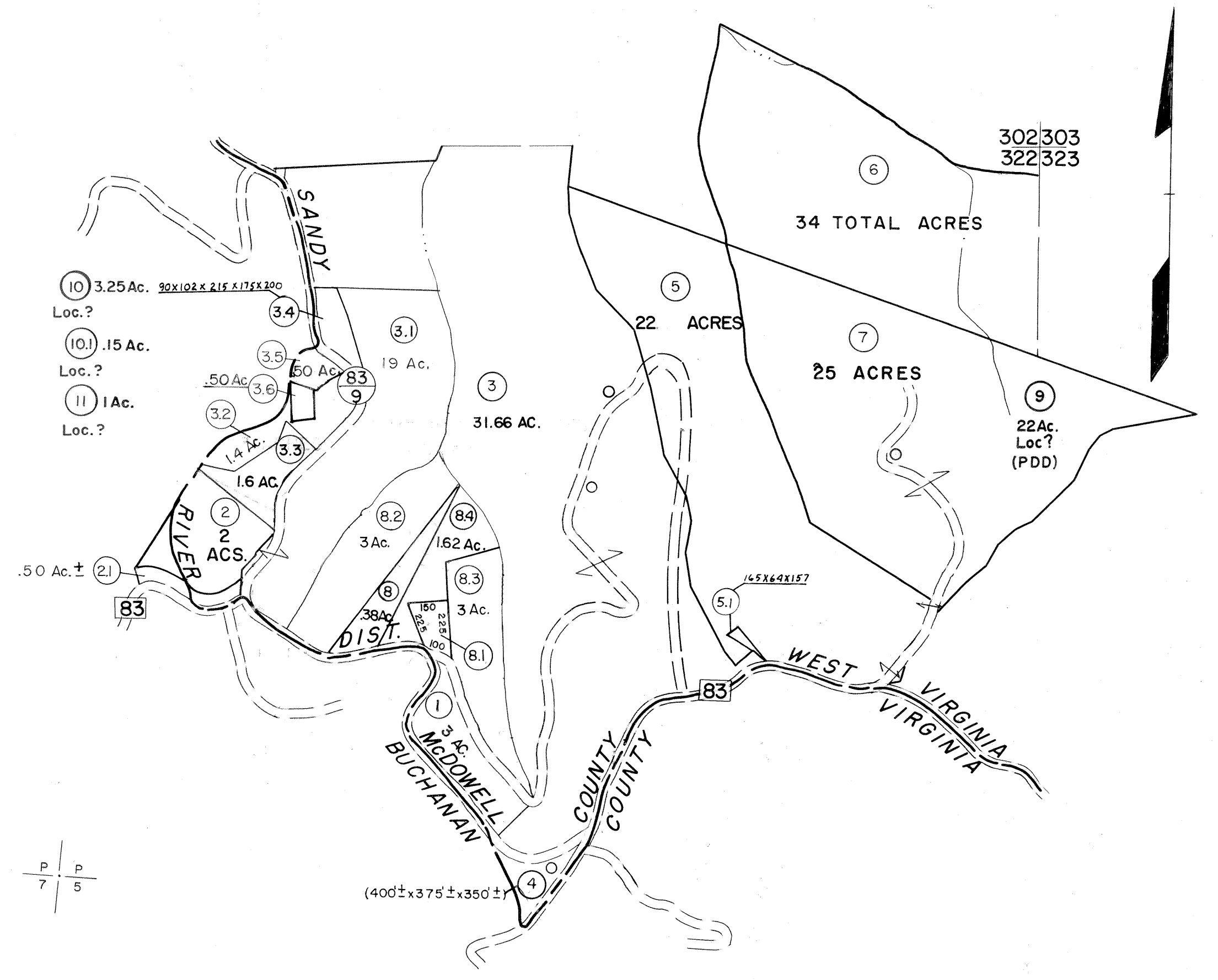


302  
322



322

322  
323  
343

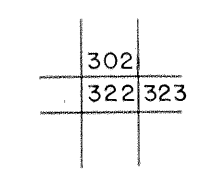
**For Tax Purposes Only**

Prepared by  
**MICHAEL BAKER, JR., INC.**  
Consulting Engineers  
Rochester, Pennsylvania

Legend	
Property line	—————
Edge of pavement or roadway	——— ———
Corporation line	-----
District line	-----
County line	-----
Original lot line	-----
Deed lot number	(15)
Parcel or index number	(99)
Improvement	O
Railroad	—+—+—+—

Revisions			
1	4-15-64	9	S B H
2	12-5-72 DAE	10	
3	Revised to 7-1-89	11	
4	7-1-84 L.E.S.	12	
5	4-1-1985	13	
6	Revised to 7-1-88	14	
7	Revised to 7-1-89	15	
8	5-15-05	16	
		17	
		18	
		19	
		20	
		21	
		22	
		23	
		24	

**KEY MAP**



**McDOWELL COUNTY**  
STATE OF WEST VIRGINIA  
Office of Assessor

DISTRICT  
**SANDY RIVER**

SHEET NO: **322**

Date, Aerial Photography: April, 1961 Date, Map: July, 1962  
Photo No: Scale: 1" = 400'